

MAYBECK

DISTRIBUTION

THE LAUNDRY, LINEN AND APPAREL COMPANY

ESTABLISHED IN 1907



CATALOG D-17

Effective 8/01/24

- Patient Care • Underpads
- Sheets & Pillowcases
- Blankets & Bedspreads
- Mattress Pads • Towels
- Bed Bugs Covers
- Clothing • Pillows
- Shower Curtains
- Privacy Screens
- Bath Robes
- Hampers & Stands
- Garment Racks & Bags
- Poly Trucks • PVC Carts
- Hamper Liners & Trucks
- Laundry Carts • Bulk Trucks
- Linen Carts • Cart Covers
- Mesh Laundry Bags
- Personal Belonging Bags
- Laundry Bags
- Melt Away Bags/Scales
- Shoes & Boots

4 EASY WAYS
TO ORDER!

PHONE: 1-888-629-2325
FAX: 718-262-9392

EMAIL: SALES@HGMAYBECK.COM
ONLINE: WWW.MAYBECKDISTRIBUTION.COM

TOWELS



BLENDED TERRY TOWELS – WHITE

86% COTTON • 16 SINGLES • CAM BORDER

CAT NO.	DESCRIPTION	WEIGHT	CASE PACK	PRICE DOZ.
407350	12 X 12 WASH CLOTH HEMMED	0.75 LB	50 DZ.	\$2.35 DZ.
407106	12 X 12 WASH CLOTH HEMMED	1.00 LB	50 DZ.	\$3.05 DZ.
400691	16 X 27 HAND TOWEL	3.00 LB	20 DZ.	\$8.70 DZ.
400693	20 X 40 BATH TOWEL	5.50 LB	10 DZ.	\$16.00 DZ.
400695	22 X 44 BATH TOWEL	6.00 LB	10 DZ.	\$17.45 DZ.
400696	24 X 48 BATH TOWEL	8.00 LB	5 DZ.	\$23.20 DZ.
400697	24 X 50 BATH TOWEL	10.50 LB	5 DZ.	\$30.45 DZ.
400692	20 X 30 BATH MAT	7.00 LB	5 DZ.	\$19.85 DZ.

SOFT BLENDED TERRY TOWELS – WHITE

86% COTTON / 14% POLYESTER • 16 SINGLES • CAM BORDER

Bleach with a soft hand and feel



CAT NO.	DESCRIPTION	WEIGHT	CASE PACK	PRICE DOZ.
506301	12 X 12 WASH CLOTH	0.75 LB	25 DZ.	\$3.15 DZ.
506302	12 X 12 WASH CLOTH	1.00 LB	25 DZ.	\$4.15 DZ.
506303	16 X 27 HAND TOWEL	3.00 LB	10 DZ.	\$11.65 DZ.
506304	20 X 40 BATH TOWEL	5.50 LB	5 DZ.	\$21.30 DZ.
506305	22 X 44 BATH TOWEL	6.25 LB	5 DZ.	\$24.20 DZ.
506306	24 X 48 BATH TOWEL	8.00 LB	5 DZ.	\$30.85 DZ.
506307	24 X 50 BATH TOWEL	10.50 LB	2 DZ.	\$40.60 DZ.
506308	20 X 30 BATH MAT	7.00 LB	5 DZ.	\$24.95 DZ.



HOTEL QUALITY TOWELS



RINGSPUN BLENDED TOWELS – WHITE

86% COTTON / 14% POLYESTER • 12 SINGLES • CAM BORDER

*Domestic
Quality*

CAT NO.	DESCRIPTION	WEIGHT	CASE PACK	PRICE DOZ.
607402	12 X 12 WASH CLOTH HEMMED	1.00 LB	25 DZ.	\$4.85 DZ.
607403	16 X 27 HAND TOWEL	3.00 LB	10 DZ.	\$14.15 DZ.
607404	20 X 40 BATH TOWEL	5.50 LB	5 DZ.	\$25.85 DZ.
607405	22 X 44 BATH TOWEL	6.50 LB	5 DZ.	\$30.50 DZ.
607406	24 X 48 BATH TOWEL	8.00 LB	5 DZ.	\$37.50 DZ.
607407	24 X 50 BATH TOWEL	10.50 LB	2 DZ.	\$49.30 DZ.
607408	20 X 30 BATH MAT	7.00 LB	5 DZ.	\$30.35 DZ.

RINGSPUN 100% COTTON TOWELS – WHITE

100% COTTON • 12 SINGLES • DOBBY BORDER

*Domestic
Quality*

CAT NO.	DESCRIPTION	WEIGHT	CASE PACK	PRICE DOZ.
706811	13 X 13 WASH CLOTH	1.50 LB	25 DZ.	\$6.35 DZ.
706812	16 X 30 HAND TOWEL	4.50 LB	10 DZ.	\$18.35 DZ.
706813	27 X 50 BATH TOWEL	14.00 LB	2 DZ.	\$56.85 DZ.
706814	27 X 54 BATH TOWEL	17.00 LB	2 DZ.	\$69.00 DZ.
706815	22 X 34 BATH MAT	9.50 LB	2 DZ.	\$35.60 DZ.

RINGSPUN 100% COTTON TOWELS – WHITE

100% COTTON • 12 SINGLES • DOBBY BORDER • NATURAL SELVAGE

*Domestic
Quality*

CAT NO.	DESCRIPTION	WEIGHT	CASE PACK	PRICE DOZ.
805911	13 X 13 WASH CLOTH	1.50 LB	25 DZ.	\$7.55 DZ.
805912	16 X 30 HAND TOWEL	4.50 LB	10 DZ.	\$22.20 DZ.
805913	27 X 50 BATH TOWEL	14.00 LB	2 DZ.	\$68.95 DZ.
805914	27 X 54 BATH TOWEL	17.00 LB	2 DZ.	\$83.70 DZ.
805915	22 X 34 BATH MAT	9.50 LB	2 DZ.	\$43.20 DZ.



TOWELS



COTTON TERRY TOWELS – WHITE

100% COTTON • 10 SINGLES • CAM BORDER

CAT NO.	DESCRIPTION	WEIGHT	CASE PACK	PRICE DOZ.
200653	12 X 12 WASH CLOTH	0.75 LB	50 DZ.	\$2.10 DZ.
200659	12 X 12 WASH CLOTH	1.00 LB	50 DZ.	\$2.80 DZ.
200687	15 X 25 HAND TOWEL	2.25 LB	20 DZ.	\$5.85 DZ.
201046	16 X 27 HAND TOWEL	2.62 LB	20 DZ.	\$6.85 DZ.
200660	16 X 27 HAND TOWEL	2.75 LB	20 DZ.	\$7.20 DZ.
200664	20 X 40 BATH TOWEL	4.00 LB	10 DZ.	\$10.50 DZ.
200669	20 X 40 BATH TOWEL	4.50 LB	10 DZ.	\$11.85 DZ.
200672	20 X 40 BATH TOWEL	5.00 LB	10 DZ.	\$13.15 DZ.
200674	20 X 40 BATH TOWEL	5.50 LB	10 DZ.	\$14.35 DZ.
200675	22 X 44 BATH TOWEL	5.75 LB	10 DZ.	\$15.10 DZ.
200679	22 X 44 BATH TOWEL	6.00 LB	10 DZ.	\$15.75 DZ.
200681	24 X 48 BATH TOWEL	7.00 LB	5 DZ.	\$18.35 DZ.
200682	24 X 48 BATH TOWEL	7.50 LB	5 DZ.	\$19.65 DZ.
200683	24 X 48 BATH TOWEL	8.00 LB	5 DZ.	\$20.95 DZ.
200684	24 X 50 BATH TOWEL	10.00 LB	5 DZ.	\$26.15 DZ.
200662	20 X 30 BATH MAT	6.50 LB	5 DZ.	\$15.80 DZ.

DYED COLORED TOWELS AND WASH CLOTHS

100% COTTON • 10 SINGLES • CAM BORDER



CAT NO.	DESCRIPTION	WEIGHT	COLOR	CASE PACK	PRICE DOZ.
300655	12 X 12 WASH CLOTH	0.75 LB	BLUE	50 DZ.	\$3.30 DZ.
300658	12 X 12 WASH CLOTH	0.75 LB	SEAFOAM	50 DZ.	\$3.30 DZ.
300654	12 X 12 WASH CLOTH	0.75 LB	BEIGE	50 DZ.	\$3.30 DZ.
300656	12 X 12 WASH CLOTH	0.75 LB	DARK BROWN	50 DZ.	\$3.30 DZ.
300666	20 X 40 BATH TOWEL	4.00 LB	DARK BROWN	10 DZ.	\$16.95 DZ.
306580	20 X 40 BATH TOWEL	5.00 LB	DARK BROWN	10 DZ.	\$16.95 DZ.



TOWELS



CORRECTIONAL ECONOMY TOWELS

100% COTTON • 10 SINGLES • SINGLE CAM BORDER

CAT NO.	DESCRIPTION	COLOR	WEIGHT	CASE PACK	PRICE DOZ.
307310	12 X 12 WASH CLOTH	WHITE	0.75 LB	50 DZ.	\$1.95 DZ.
307311	12 X 12 WASH CLOTH	WHITE	1.00 LB	50 DZ.	\$2.55 DZ.
307312	16 X 27 HAND TOWEL	WHITE	2.62 LB	20 DZ.	\$6.15 DZ.
307313	20 X 40 BATH TOWEL	WHITE	4.00 LB	10 DZ.	\$9.40 DZ.
307314	20 X 40 BATH TOWEL	WHITE	5.00 LB	10 DZ.	\$11.65 DZ.
307315	22 X 44 BATH TOWEL	WHITE	5.75 LB	10 DZ.	\$13.46 DZ.
307316	24 X 48 BATH TOWEL	WHITE	7.50 LB	5 DZ.	\$17.55 DZ.

CORRECTIONAL SHEETS & PILLOWCASES T-128

30% COTTON / 70% POLYESTER

CAT NO.	DESCRIPTION	COLOR	CASE PACK	PRICE DOZ.
307423	PILLOWCASE	WHITE	25	\$10.70 DZ.
307750	PILLOWCASE	BROWN	25	\$13.45 DZ.
307421	54 X 90 FLAT SHEET	WHITE	5	\$32.15 DZ.
307751	54 X 90 FLAT SHEET	BROWN	5	\$42.85 DZ.
307422	66 X 104 FLAT SHEET	WHITE	5	\$46.70 DZ.



SHEETS & PILLOWCASES



SHEETS & PILLOWCASES T-130 WHITE

55% COTTON / 45% POLYESTER

CAT NO.	DESCRIPTION	CASE PACK	PRICE DOZ.
200730	STANDARD SIZE PILLOW CASE	25 DZ.	\$11.95 DZ.
205538	54 X 90 FLAT SHEET	5 DZ.	\$41.65 DZ.
205670	30 X 75 x 6 FITTED SHEET	5 DZ.	\$35.85 DZ.
205532	36 X 80 x 7 HOSPITAL TWIN FITTED SHEET	5 DZ.	\$44.95 DZ.
205533	36 X 84 x 7 HOSPITAL TWIN FITTED SHEET	5 DZ.	\$47.30 DZ.
205534	39 X 75 x 7 TWIN FITTED SHEET	5 DZ.	\$44.00 DZ.
205539	66 X 104 TWIN FLAT SHEET	5 DZ.	\$51.45 DZ.
205540	66 X 108 TWIN FLAT SHEET	5 DZ.	\$55.45 DZ.
205541	66 X 115 TWIN FLAT SHEET	5 DZ.	\$58.80 DZ.

CRAFTED SHEETS & PILLOWCASES T-130 WHITE

55% COTTON / 45% POLYESTER • CRAFTED IN THE USA

CAT NO.	DESCRIPTION	CASE PACK	PRICE DOZ.
300431	STANDARD SIZE PILLOW CASE	12 DZ.	\$19.35 DZ.
300440	54 X 90 FLAT SHEET	5 DZ.	\$51.35 DZ.
305122	30 X 75 x 6 FITTED SHEET	5 DZ.	\$49.30 DZ.
300422	36 X 80 x 7 HOSPITAL TWIN FITTED SHEET	5 DZ.	\$62.50 DZ.
300424	36 X 84 x 7 HOSPITAL TWIN FITTED SHEET	5 DZ.	\$63.35 DZ.
300425	39 X 75 x 7 TWIN FITTED SHEET	5 DZ.	\$58.50 DZ.
300442	66 X 104 TWIN FLAT SHEET	5 DZ.	\$68.50 DZ.
300443	66 X 108 TWIN FLAT SHEET	5 DZ.	\$71.35 DZ.
300446	66 X 115 TWIN FLAT SHEET	5 DZ.	\$75.65 DZ.



SHEETS & PILLOWCASES



SHEETS & PILLOWCASES T-180 WHITE

55% COTTON / 45% POLYESTER

CAT NO.	DESCRIPTION	CASE PACK	PRICE DOZ.
203736	STANDARD SIZE PILLOW CASE	12 DZ.	\$14.15 DZ.
205569	54 X 90 FLAT SHEET	5 DZ.	\$46.85 DZ.
206433	30 X 75 x 6 FITTED SHEET	5 DZ.	\$41.35 DZ.
205562	36 X 80 x 7 HOSPITAL TWIN FITTED SHEET	5 DZ.	\$54.20 DZ.
205564	36 X 84 x 7 HOSPITAL TWIN FITTED SHEET	5 DZ.	\$55.65 DZ.
205566	39 X 75 x 7 TWIN FITTED SHEET	5 DZ.	\$50.60 DZ.
205571	66 X 104 TWIN FLAT SHEET	5 DZ.	\$62.80 DZ.
205572	66 X 108 TWIN FLAT SHEET	5 DZ.	\$65.30 DZ.
205573	66 X 115 TWIN FLAT SHEET	5 DZ.	\$68.50 DZ.

CRAFTED SHEETS & PILLOWCASES T-180 WHITE

55% COTTON / 45% POLYESTER • CRAFTED IN THE USA

CAT NO.	DESCRIPTION	CASE PACK	PRICE DOZ.
300476	STANDARD SIZE PILLOW CASE	12 DZ.	\$21.70 DZ.
300494	54 X 90 FLAT SHEET	5 DZ.	\$62.35 DZ.
300463	30 X 75 x 6 FITTED SHEET	5 DZ.	\$54.15 DZ.
300465	36 X 80 x 7 HOSPITAL TWIN FITTED SHEET	5 DZ.	\$72.20 DZ.
300468	36 X 84 x 7 HOSPITAL TWIN FITTED SHEET	5 DZ.	\$74.65 DZ.
300473	39 X 75 x 7 TWIN FITTED SHEET	5 DZ.	\$73.80 DZ.
300499	66 X 104 TWIN FLAT SHEET	5 DZ.	\$68.50 DZ.
300500	66 X 108 TWIN FLAT SHEET	5 DZ.	\$82.80 DZ.
300505	66 X 115 TWIN FLAT SHEET	5 DZ.	\$87.65 DZ.



SHEETS & PILLOWCASES



T-180 ELITE SHEETS & PILLOWCASES – WHITE

55% COTTON / 45% POLYESTER • NO IRON



CAT NO.	DESCRIPTION	CASE PACK	PRICE DOZ.
403578	STANDARD SIZE PILLOW CASE	6 DZ.	\$15.60 DZ.
403580	QUEEN SIZE PILLOW CASE	6 DZ.	\$16.45 DZ.
403584	KING SIZE PILLOW CASE	6 DZ.	\$21.00 DZ.
403606	66 X 104 TWIN FLAT SHEET	2 DZ.	\$67.05 DZ.
403608	66 X 108 TWIN FLAT SHEET	2 DZ.	\$69.80 DZ.
403610	66 X 115 TWIN FLAT SHEET	2 DZ.	\$73.60 DZ.
403612	81 X 108 FULL FLAT SHEET	2 DZ.	\$87.35 DZ.
403614	81 X 115 FULL FLAT SHEET	2 DZ.	\$90.70 DZ.
403616	90 X 110 QUEEN FLAT SHEET	2 DZ.	\$95.50 DZ.
403618	90 X 115 QUEEN FLAT SHEET	2 DZ.	\$99.60 DZ.
403620	108 X 110 KING FLAT SHEET	2 DZ.	\$110.20 DZ.
403622	108 X 115 KING FLAT SHEET	2 DZ.	\$115.45 DZ.
403586	39 X 75 X 12 TWIN FITTED SHEET	2 DZ.	\$64.70 DZ.
403588	36 X 80 X 12 HOSPITAL TWIN FITTED SHEET	2 DZ.	\$63.50 DZ.
403590	54 X 75 X 12 FULL FITTED SHEET	2 DZ.	\$81.20 DZ.
403598	54 X 75 X 15 FULL FITTED SHEET	2 DZ.	\$88.20 DZ.
403592	54 X 80 X 12 FULL XL FITTED SHEET	2 DZ.	\$83.95 DZ.
403600	54 X 80 X 15 FULL XL FITTED SHEET	2 DZ.	\$93.85 DZ.
403594	60 X 80 X 12 QUEEN FITTED SHEET	2 DZ.	\$88.95 DZ.
403602	60 X 80 X 15 QUEEN FITTED SHEET	2 DZ.	\$98.35 DZ.
403596	78 X 80 X 12 KING FITTED SHEET	2 DZ.	\$105.65 DZ.
403604	78 X 80 X 15 KING FITTED SHEET	2 DZ.	\$114.20 DZ.



SHEETS & PILLOWCASES

T-200 SHEETS & PILLOWCASES – WHITE

60% COTTON / 40% POLYESTER • NO IRON

CAT NO.	DESCRIPTION	CASE PACK	PRICE DOZ.
703456	STANDARD SIZE PILLOW CASE	6 DZ.	\$18.00 DZ.
703458	KING SIZE PILLOW CASE	6 DZ.	\$23.05 DZ.
705697	66 X 104 TWIN FLAT SHEET	2 DZ.	\$75.50 DZ.
705578	66 X 108 TWIN FLAT SHEET	2 DZ.	\$78.05 DZ.
703472	66 X 115 TWIN FLAT SHEET	2 DZ.	\$82.65 DZ.
705698	81 X 108 FULL FLAT SHEET	2 DZ.	\$98.15 DZ.
703474	81 X 115 FULL FLAT SHEET	2 DZ.	\$103.45 DZ.
705699	90 X 110 QUEEN FLAT SHEET	2 DZ.	\$109.85 DZ.
703478	90 X 115 QUEEN FLAT SHEET	2 DZ.	\$113.50 DZ.
703480	90 X 120 QUEEN FLAT SHEET	2 DZ.	\$120..10 DZ.
705746	108 X 110 KING FLAT SHEET	2 DZ.	\$124.50 DZ.
703482	108 X 115 KING FLAT SHEET	2 DZ.	\$129.45 DZ.
703462	39 X 80 X 12 TWIN FITTED SHEET	2 DZ.	\$83.45 DZ.
703464	54 X 75 X 15 FULL FITTED SHEET	2 DZ.	\$101.80 DZ.
703466	54 X 80 X 12 FULL XL FITTED SHEET	2 DZ.	\$97.80 DZ.
705576	60 X 80 X 12 QUEEN FITTED SHEET	2 DZ.	\$104.00 DZ.
703468	60 X 80 X 15 QUEEN FITTED SHEET	2 DZ.	\$113.50 DZ.
705577	78 X 80 X 12 KING FITTED SHEET	2 DZ.	\$121.10 DZ.
703470	78 X 80 X 15 KING FITTED SHEET	2 DZ.	\$128.50 DZ.

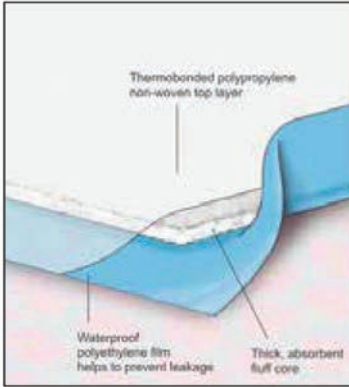
T-250 SHEETS & PILLOWCASES – WHITE

60% COTTON / 40% POLYESTER • NO IRON

CAT NO.	DESCRIPTION	CASE PACK	PRICE DOZ.
903633	STANDARD SIZE PILLOW CASE	6 DZ.	\$21.85 DZ.
903637	KING SIZE PILLOW CASE	6 DZ.	\$27.20 DZ.
907088	66 X 115 TWIN FLAT SHEET	2 DZ.	\$113.15 DZ.
903646	84 X 120 FULL FLAT SHEET	2 DZ.	\$139.35 DZ.
903643	94 X 115 QUEEN FLAT SHEET	2 DZ.	\$144.60 DZ.
903647	94 X 120 QUEEN FLAT SHEET	2 DZ.	\$150.60 DZ.
903644	108 X 115 KING FLAT SHEET	2 DZ.	\$161.70 DZ.
903648	108 X 120 KING FLAT SHEET	2 DZ.	\$168.60 DZ.
903645	114 X 115 KING FLAT SHEET	2 DZ.	\$170.00 DZ.
907089	39 X 80 x 12 TWIN FITTED SHEET	2 DZ.	\$87.80 DZ.
903639	54 X 80 X 15 FULL FITTED SHEET	2 DZ.	\$129.80 DZ.
903640	60 X 80 X 15 QUEEN FITTED SHEET	2 DZ.	\$139.20 DZ.
903641	78 X 80 X 15 KING FITTED SHEET	2 DZ.	\$157.80 DZ.

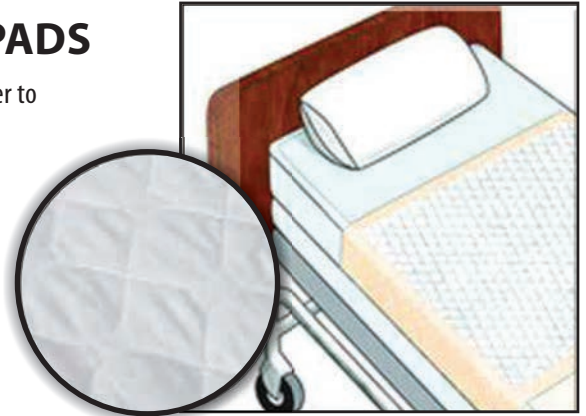


UNDERPADS



INCONTINENT: UNDERPADS

Reusable Incontinent Products are the answer to prolonging the useful life of your linen items. All items are designed to maximize both patient comfort and be cost effective. This is achieved through the use of the latest generation of high quality incontinent fabrics and the right combination of material for the most protection.



REUSABLE 3-PLY QUILTED UNDERPAD – 34" x 36"

8 OUNCE SOAKER – 95% POLY / 5% RAYON • WATERPROOF PVC VINYL BARRIER
COMFORT SOFT FACE FABRIC • 55% COTTON / 45% POLY HEAVY TWILL

CAT NO.	COLOR	SIZE	SOAKER	CASE PACK	PRICE
307322	BLUE VINYL	34 x 36	8 oz.	2 DZ.	\$47.65 DZ.
307323	PINK VINYL	34 x 36	8 oz.	2 DZ.	\$47.65 DZ.
307324	GREEN VINYL	34 x 36	8 oz.	2 DZ.	\$47.65 DZ.
307325	TAN VINYL	34 x 36	8 oz.	2 DZ.	\$47.65 DZ.

REUSABLE 3-PLY QUILTED UNDERPAD – 34" x 36"

10 OUNCE SOAKER – 95% POLY / 5% RAYON • WATERPROOF PVC VINYL BARRIER
COMFORT SOFT FACE FABRIC • 55% COTTON / 45% POLY HEAVY TWILL

CAT NO.	COLOR	SIZE	SOAKER	CASE PACK	PRICE
407326	BLUE VINYL	34 x 36	10 oz.	2 DZ.	\$50.60 DZ.
407328	GREEN VINYL	34 x 36	10 oz.	2 DZ.	\$50.60 DZ.

DRY-WICK 3-PLY QUILTED UNDERPAD – 34" x 36"

10 OUNCE SOAKER – 65% POLY / 35% RAYON • WATERPROOF PVC VINYL BARRIER
COMFORT SOFT FACE FABRIC • 100% TRICOT FACE FABRIC

CAT NO.	COLOR	SIZE	SOAKER	CASE PACK	PRICE
507317	BLUE VINYL	34 x 36	10 oz.	2 DZ.	\$65.35 DZ.



PILLOWS



COMFORT SOFT HEALTH CARE PILLOW

Description:

Polypropoline cover, flame retardant, antibacterial, anti-static, washable.

Colors: White

CAT NO.	SIZE	CASE PACK	PRICE EACH
CS1925	19" X 25"	15 EA.	\$5.70 EA.
CS2026	20" X 36"	12 EA.	\$6.20 EA.
CS2127	21" X 27"	12 EA.	\$6.80 EA.

STAPH CHECK PILLOW

Description:

Antibacterial, anti-static, flame Retardant, fluid proof, wipes clean.

Colors: White, blue.

CAT NO.	SIZE	CASE PACK	PRICE EACH
PS2026	20" X 26"	12	\$7.35 EA.
PS2127	21" X 27"	12	\$7.60 EA.
PS2131	21" X 31"	8	\$10.30 EA.
PS2137	21" X 37"	6	\$13.40 EA.
PS1318	13" X 18"	12	\$5.55 EA.

KARE PLUS UNCOATED NYLON PILLOW

Description:

Ultra lightweight nylon taleta, fire retardant, water repellant, wipes clean/no laundering, hypo-allergenic.

Ticking: White. 70 Denier.

CAT NO.	SIZE	CASE PACK	PRICE EACH
PNL2127	21" X 27"	12	\$8.70 EA.

DISPOSABLE PILLOW

Description:

Non-woven ticking with 100% polyester fiberfill.

Ticking: Cloth. Synthetic fiber non-woven.

Knitted in natural non-compressed state.

CAT NO.	SIZE	CASE PACK	PRICE EACH
DP2026	20" X 26"	18	\$5.75 EA.
DP2127	21" X 27"	18	\$6.10 EA.

GREEN CHOICE PILLOW

Description:

Filled with soft resilient premium, hollow siliconized fiberfill to ensure maximum long-term sleep comfort.

Ticking: Poly/cotton, edges automatically sewn.

CAT NO.	SIZE	CASE PACK	PRICE EACH
PGR2026	STANDARD	12	\$7.55 EA.
PGR2030	QUEEN	10	\$7.60 EA.
PGR2036	KING	6	\$11.15 EA.

GOLD CHOICE PILLOW

Description:

Extra hollow siliconized fiberfill in their pillows. 22 oz. fill weight.

Ticking: Poly/Cotton, edges automatically sewn.

CAT NO.	SIZE	CASE PACK	PRICE EACH
PGL2026	STANDARD	12	\$7.75 EA.
PGL2030	QUEEN	8	\$9.25 EA.
PGL2036	KING	6	\$11.35 EA.

PILLOW PROTECTORS

Description:

Blend of 50% polyester
50% cotton.

Rustproof double sewn zipper eliminates frayed threads when washed.



CAT NO.	SIZE	CASE PACK	PRICE EACH
PC2026	STANDARD	12	\$4.05 EA.
PC2030	QUEEN	12	\$4.40 EA.
PC2036	KING	12	\$5.40 EA.



COMFORT SOFT HEALTH CARE PILLOW



GOLD CHOICE PILLOW



KARE PLUS UNCOATED NYLON PILLOW



GREEN CHOICE PILLOW



DISPOSABLE PILLOW



STAPH CHECK PILLOW



PATIENT CARE



PATIENT GOWNS TWILL

CAT NO.	DESCRIPTION	CASE PACK	PRICE/DZ.
200713	ECONOMY PATIENT GOWN STRAIGHT BACK BLUE BACKGROUND	25 DZ.	\$27.50 DZ.
201579	PATIENT GOWN HEAVY TWILL BLUE ABSTRACT BACKGROUND	10 DZ.	\$57.10 DZ.
200712	PATIENT GOWN 62" 4.1 OZ. TWILL ANGLE BACK WHITE BACKGROUND	10 DZ.	\$44.05 DZ.
200716	IV GOWN, TELE PKT, SNAPS 67" HEAVY TWILL 4+ OZ GREEN ABSTRACT	10 DZ.	\$85.80 DZ.



PATIENT GOWNS 100% POLYESTER

CAT NO.	DESCRIPTION	CASE PACK	PRICE/DZ.
207724	POLYESTER PATIENT GOWN STRAIGHT BACK BLUE	6 DZ.	\$69.80 DZ.
207723	POLYESTER IV PATIENT GOWN COLOR GREEN	6 DZ.	\$87.80 DZ.

KNITTED FITTED SHEETS

CAT NO.	DESCRIPTION	CASE PACK	PRICE/DZ.
203393	KNITTED FITTED SHEETS 55/45 C/P 36 X 84 X 15 15 OZ BLUE HEM	5 DZ.	\$48.20 DZ.
203394	KNITTED FITTED SHEETS 55/45 C/P 36 X 84 X 15 19 OZ GREEN HEM	5 DZ.	\$59.95 DZ.
205771	KNITTED FITTED SHEETS 55/45 C/P 36 X 84 X 16 24 OZ GOLD HEM	5 DZ.	\$75.60 DZ.



KNITTED FITTED SHEETS POPCORN W WEAVE

CAT NO.	DESCRIPTION	CASE PACK	PRICE/DZ.
205785	KNITTED FITTED SHEETS 55/45 C/P 36 X 84 X 15 21 OZ WHITE	5 DZ.	\$67.00 DZ.

TERRY BIBS VELCRO CLOSURE 100% COTTON

CAT NO.	DESCRIPTION	COLOR	WEIGHT	CASE PACK	PRICE/DZ.
200701	18 X 30	BLUE	3.30 LB	25 DZ.	\$18.00 DZ.
200702	18 X 30	WHITE	3.30 LB	25 DZ.	\$17.10 DZ.

TERRY BIBS VELCRO CLOSURE PREMIUM BLENDED

CAT NO.	DESCRIPTION	COLOR	WEIGHT	CASE PACK	PRICE/DZ.
206032	18 X 30	WHITE	3.50 LB	6 DZ.	\$20.85 DZ.
206038	18 X 30	BLUE	3.50 LB	6 DZ.	\$21.70 DZ.
206039	18 X 30	YELLOW	3.50 LB	6 DZ.	\$21.70 DZ.
206033	18 X 36	WHITE	4.50 LB	6 DZ.	\$21.70 DZ.
206031	18 X 36	BLUE	4.50 LB	6 DZ.	\$23.35 DZ.
206034	18 X 36	RAINBOW	4.50 LB	6 DZ.	\$28.30 DZ.
206067	18 X 36	BAY STRIPE	5.50 LB	6 DZ.	\$33.10 DZ.



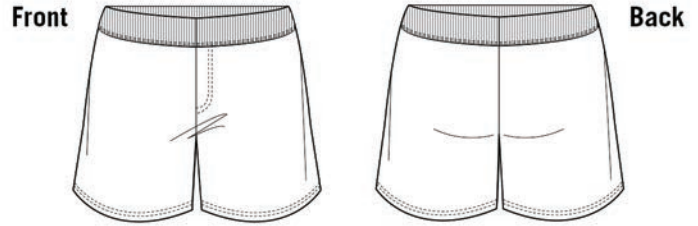
CLOTHING



MEN'S WHITE AND COLORED BOXER SHORTS

Features:

- 60% Cotton, 40% Polyester.
- Elastic waist band and fly front.
- Priced by the dozen.



CAT NO.	COLOR	SIZE					
		S-XL	2XL	3XL	4XL	5XL	6XL
113	WHITE	\$13.95 DZ.	\$14.65 DZ.	\$15.35 DZ.	\$16.10 DZ.	\$16.80 DZ.	\$17.50 DZ.
114	COLOR	\$18.95 DZ.	\$20.35 DZ.	\$21.80 DZ.	\$23.20DZ.	\$24.65 DZ.	\$26.10 DZ.

AVAILABLE COLORS: BROWN & ORANGE

MEN'S 100% COTTON COLORED T-SHIRTS



Features:

- 100% Cotton.
- Crew Neck Style.
- Priced by the dozen.

MEN'S 100% COTTON WHITE T-SHIRTS



Features:

- 100% Cotton.
- Crew Neck Style.
- Priced by the dozen.
- Irregulars subject to availability

CAT NO.	COLOR	SIZE					
		S-XL	2XL	3XL	4XL	5XL	6XL
115	WHITE	\$32.15 DZ.	\$34.30 DZ.	\$37.15 DZ.	\$41.45 DZ.	\$45.70 DZ.	\$50.00 DZ.
115 IRREGULARS	WHITE	\$25.35 DZ.	\$33.20 DZ.	\$35.00 DZ.	N/A	N/A	N/A
116	COLOR	\$42.50 DZ.	\$47.15 DZ.	\$50.00 DZ.	\$52.85 DZ.	\$55.70 DZ.	\$58.55 DZ.

AVAILABLE COLORS: BROWN & ORANGE

KNIT HATS

Features:

- 100% Acrylic rib construction.
- One size fits all.
- Priced by the dozen.



CAT NO.	COLOR	CASE PACK	PRICE DZ.
119-OR	ORANGE	10	\$14.65 DZ.
119-C	STANDARD	10	\$13.95 DZ.

STANDARD COLORS: NAVY, GREEN, BLACK & BROWN



CLOTHING



WOMEN'S SPORTS BRA

Features:

- Cotton/Polyester/Spandex.
- Double Lined Front Fabric.
- No Metal Or Plastic.
- Priced by the dozen.



CAT NO.	COLOR	SIZE			
		32-40	42-44	46-52	54-58
216	WHITE	\$27.85 DZ.	\$30.70 DZ.	\$33.60 DZ.	\$36.45 DZ.
216-C	GREY OR BROWN	\$31.45 DZ.	\$34.30 DZ.	\$37.15 DZ.	\$40.00 DZ.



WOMEN'S COTTON PANTIES

Features:

- 100% Cotton.
- Elastic Waist & Leg.
- Priced by the dozen.

CAT NO.	COLOR	SIZE		
		5-8	9-10	11-16
149	WHITE	\$11.45 DZ.	\$13.20 DZ.	\$15.70 DZ.
150	BROWN	\$13.95 DZ.	\$15.35 DZ.	\$17.50 DZ.

TUBE OR CREW SOCKS

Features:

- 80% Cotton, 20% Polyester.
- Heavy Cushioned.
- Priced by the dozen.



CREW SOCKS			
CAT NO.	COLOR	CASE PACK	PRICE DZ.
125	WHITE	10	\$6.45 DZ.
125-C	COLOR	10	\$7.85 DZ.
AVAILABLE COLORS: GREY, BLACK, ORANGE, BROWN			

TUBE SOCKS			
CAT NO.	COLOR	CASE PACK	PRICE DZ.
126	WHITE	10	\$6.75 DZ.
126-C	COLOR	10	\$8.20 DZ.
AVAILABLE COLORS: GREY, BLACK, ORANGE, BROWN			





CLOTHING

ADULT SHORTS

Features:

- Fleece or jersey knit
- Available Elastic or drawstring waist band
- Available 7" – 9" inseam
- No Pockets (pockets available upon request)
- Colors Grey, Orange, Brown, Navy, Royal, Red, And Black



CAT NO.	FABRIC	SIZES					
		S-XL	2XL	3XL	4XL	5XL	6XL
127	FLEECE	\$11.60 EA	\$13.20 EA	\$14.40 EA	\$15.40 EA	\$17.00 EA	\$18.50 EA
128	JERSEY KNIT	\$12.80 EA	\$14.00 EA	\$15.10 EA	\$16.40 EA	\$18.50 EA	\$21.40 EA

CROSS HEART BRA

Features:

- Cross heart style
- Color white
- No-underwire
- 1" adjustable straps
- 2 hook closure back
- Sizes A – DDD, Poly cotton fabric cup



CAT NO.	COLOR	32-38(A,B,C)	40-48 (A,B,C)	32-50 (D)	34-50 (DD)	38-50 (DDD)
2277	WHITE	\$28.60 DZ	\$30.00 DZ	\$31.45 DZ	\$34.30 DZ	\$37.15 DZ

MEN'S BRIEFS



Features:

- Jockey style
- Poly cotton
- Functional front fly
- Reinforced Elastic waist band

MEN'S BOXER BRIEF



CAT NO.	DESCRIPTION	SIZES					
		S-XL	2XL	3XL	4XL	5XL	6XL
108	BOXERS WHITE	\$13.60 DZ	\$14.65 DZ	\$16.00 DZ	\$17.20 DZ	\$18.60 DZ	\$20.00 DZ
110	BOXER BRIEFS WHITE	\$28.60 DZ	\$31.45 DZ	\$34.30 DZ	\$37.15 DZ	\$40.00 DZ	\$42.85 DZ

COLORS AVAILABLE CALL FOR PRICING



CLOTHING

MEN'S LONG SLEEVE THERMAL SHIRT

Features:

- 60% Cotton 40% Polyester.
- Double ply neck band for strength.
- Priced by the dozen.



MEN'S ANKLE LENGTH THERMAL DRAWER

Features:

- 60% Cotton 40% Polyester.
- Elastic Waist Band.
- Priced by the dozen.



CAT NO.	DESCRIPTION	COLOR	SIZES					
			S-XL	2XL	3XL	4XL	5XL	6XL
111	TOP	NATURAL	\$33.60 DZ.	\$38.60 DZ.	\$42.85 DZ.	\$45.70 DZ.	\$48.60 DZ.	\$51.45 DZ.
112	BOTTOM	NATURAL	\$33.60 DZ.	\$38.60 DZ.	\$42.85 DZ.	\$45.70 DZ.	\$48.60 DZ.	\$51.45 DZ.

SWEAT SHIRTS

Features:

- 50% Cotton 50% Polyester.
- Seamless Rib Collars.
- Rib Cuff.
- Band Bottom .



SWEAT PANTS

Features:

- 50% Cotton 50% Polyester.
- Elastic waistband.
- Rib Cuff.
- No Pockets.



CAT NO.	DESCRIPTION	SIZES				
		S-XL	2XL	3XL	4XL	5XL
129	SHIRTS	\$15.35 EA.	\$16.20 EA.	\$17.00 EA.	\$18.35 EA.	\$19.70 EA.
130	PANTS	\$15.35 EA.	\$16.20 EA.	\$17.00 EA.	\$18.35 EA.	\$19.70 EA.

AVAILABLE COLORS: NAVY, GREEN, BROWN, BROWN & LIGHT BLUE



MESH BAGS 15" X 20"

Laundry mesh bags are used to collect personal belongings. Most efficient laundering and sorting process. Contents are washed and dried in the bag and returned to the resident.

- Sewn on name tags for proper property markings.
- Available in six sizes and closure styles.
- 100% polyester leno weave construction.

Colors: White, Red, Blue, Green, Yellow, Orange, Brown, Purple, and Black

15" x 20" MESH BAG • DRAW STRING • SPRING LOCK • NAME TAG

CAT. NO.	WEIGHT	COLOR	CLOSURE	FLAT SIZE	PRICE/DZ 1-11	PRICE/DZ 12-24
SL-520DS	Medium	White	Drawstring	15 x 20	\$45.00	\$42.00
SL-520DS-V	Medium	Color	Drawstring	15 x 20	\$49.00	\$46.00
SH-520DS	Heavy	White	Drawstring	15 x 20	\$57.00	\$52.00
SH-520DS-V	Heavy	Color	Drawstring	15 x 20	\$59.00	\$57.00
SB-520DS	Ballistic	White	Drawstring	15 x 20	\$68.00	\$63.00

B-lock Closure Available. Add \$10.00 Dozen to Above



15" x 20" MESH BAG • ZIPPER CLOSURE • NAME TAG

CAT. NO.	WEIGHT	COLOR	CLOSURE	FLAT SIZE	PRICE/DZ 1-11	PRICE/DZ 12-24
CL-520ZR	Medium	White	Zipper	15 x 20	\$45.00	\$41.00
CL-520ZR-V	Medium	Color	Zipper	15 x 20	\$50.00	\$46.00
CH-520ZR	Heavy	White	Zipper	15 x 20	\$59.00	\$56.00
CH-520ZR-V	Heavy	Color	Zipper	15 x 20	\$64.00	\$59.00
CB-520ZR	Ballistic	White	Zipper	15 x 20	\$71.00	\$67.00



15" x 20" MESH BAG • RUBBER CLOSURE • NAME TAG

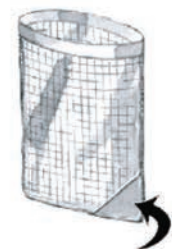
CAT. NO.	WEIGHT	COLOR	CLOSURE	FLAT SIZE	PRICE/DZ 1-11	PRICE/DZ 12-24
CL-520RC	Medium	White	Rubber	15 x 20	\$46.00	\$43.00
CL-520RC-V	Medium	Color	Rubber	15 x 20	\$51.00	\$47.00
CH-520RC	Heavy	White	Rubber	15 x 20	\$61.00	\$57.00
CH-520RC-V	Heavy	Color	Rubber	15 x 20	\$66.00	\$59.00
CB-520RC	Ballistic	White	Rubber	15 x 20	\$74.00	\$68.00



15" x 20" MESH BAG • OPEN TOP • NAME TAG

CAT. NO.	WEIGHT	COLOR	CLOSURE	FLAT SIZE	PRICE/DZ 1-11	PRICE/DZ 12-24
CL-520	Medium	White	Open Top	15 x 20	\$34.00	\$32.00
CL-520-V	Medium	Color	Open Top	15 x 20	\$37.00	\$35.00
CH-520	Heavy	White	Open Top	15 x 20	\$46.00	\$43.00
CH-520-V	Heavy	Color	Open Top	15 x 20	\$50.00	\$46.00
CB-520	Ballistic	White	Open Top	15 x 20	\$55.00	\$52.00

4" Laundry Pins Available. Add \$40.00 Dozen to Above



MESH BAGS 18" X 24"

Laundry mesh bags are used to collect personal belongings. Most efficient laundering and sorting process. Contents are washed and dried in the bag and returned to the resident.

- Sewn on name tags for proper property markings.
- Available in six sizes and closure styles.
- 100% polyester leno weave construction.

Colors: White, Red, Blue, Green, Yellow, Orange, Brown, Purple, and Black

18" x 24" MESH BAG • DRAW STRING • SPRING LOCK • NAME TAG

CAT. NO.	WEIGHT	COLOR	CLOSURE	FLAT SIZE	PRICE/DZ 1-11	PRICE/DZ 12-24
SL-524DS	Medium	White	Drawstring	18 x 24	\$50.00	\$46.00
SL-524DS-V	Medium	Color	Drawstring	18 x 24	\$53.00	\$48.00
SH-524DS	Heavy	White	Drawstring	18 x 24	\$62.00	\$59.00
SH-524DS-V	Heavy	Color	Drawstring	18 x 24	\$66.00	\$63.00
SB-524DS	Ballistic	White	Drawstring	18 x 24	\$75.00	\$70.00

B-lock Closure Available. Add \$10.00 Dozen to Above

18" x 24" MESH BAG • ZIPPER CLOSURE • NAME TAG

CAT. NO.	WEIGHT	COLOR	CLOSURE	FLAT SIZE	PRICE/DZ 1-11	PRICE/DZ 12-24
CL-524ZR	Medium	White	Zipper	18 x 24	\$51.00	\$48.00
CL-524ZR-V	Medium	Color	Zipper	18 x 24	\$56.00	\$52.00
CH-524ZR	Heavy	White	Zipper	18 x 24	\$67.00	\$64.00
CH-524ZR-V	Heavy	Color	Zipper	18 x 24	\$70.00	\$67.00
CB-524ZR	Ballistic	White	Zipper	18 x 24	\$80.00	\$77.00

18" x 24" MESH BAG • RUBBER CLOSURE • NAME TAG

CAT. NO.	WEIGHT	COLOR	CLOSURE	FLAT SIZE	PRICE/DZ 1-11	PRICE/DZ 12-24
CL-524RC	Medium	White	Rubber	18 x 24	\$52.00	\$49.00
CL-524RC-V	Medium	Color	Rubber	18 x 24	\$57.00	\$53.00
CH-524RC	Heavy	White	Rubber	18 x 24	\$68.00	\$64.00
CH-524RC-V	Heavy	Color	Rubber	18 x 24	\$72.00	\$68.00
CB-524RC	Ballistic	White	Rubber	18 x 24	\$82.00	\$77.00

18" x 24" MESH BAG • OPEN TOP • NAME TAG

CAT. NO.	WEIGHT	COLOR	CLOSURE	FLAT SIZE	PRICE/DZ 1-11	PRICE/DZ 12-24
CL-524	Medium	White	Open Top	18 x 24	\$41.00	\$38.00
CL-524-V	Medium	Color	Open Top	18 x 24	\$44.00	\$42.00
CH-524	Heavy	White	Open Top	18 x 24	\$52.00	\$50.00
CH-524-V	Heavy	Color	Open Top	18 x 24	\$56.00	\$51.00
CB-524	Ballistic	White	Open Top	18 x 24	\$63.00	\$59.00

4" Laundry Pins Available. Add \$40.00 Dozen to Above



SPRING LOCK CLOSURE



B-LOCK CLOSURE



ZIPPER CLOSURE



RUBBER CLOSURE



4" SAFETY PINS



MESH BAGS 18" X 30"

Laundry mesh bags are used to collect personal belongings. Most efficient laundering and sorting process. Contents are washed and dried in the bag and returned to the resident.

- Sewn on name tags for proper property markings.
- Available in six sizes and closure styles.
- 100% polyester leno weave construction.

Colors: White, Red, Blue, Green, Yellow, Orange, Brown, Purple, and Black

18" x 30" MESH BAG • DRAWSTRING • SPRING LOCK • NAME TAG

CAT. NO.	WEIGHT	COLOR	CLOSURE	FLAT SIZE	PRICE/DZ 1-11	PRICE/DZ 12-24
SL-530DS	Medium	White	Drawstring	18 x 30	\$53.00	\$50.00
SL-530DS-V	Medium	Color	Drawstring	18 x 30	\$61.00	\$55.00
SH-530DS	Heavy	White	Drawstring	18 x 30	\$67.00	\$63.00
SH-530DS-V	Heavy	Color	Drawstring	18 x 30	\$73.00	\$69.00
SB-530DS	Ballistic	White	Drawstring	18 x 30	\$80.00	\$76.00

B-lock Closure Available. Add \$10.00 Dozen to Above



DRAWSTRING CLOSURE

18" x 30" MESH BAG • ZIPPER CLOSURE • NAME TAG

CAT. NO.	WEIGHT	COLOR	CLOSURE	FLAT SIZE	PRICE/DZ 1-11	PRICE/DZ 12-24
CL-530ZR	Medium	White	Zipper	18 x 30	\$56.00	\$52.00
CL-530ZR-V	Medium	Color	Zipper	18 x 30	\$62.00	\$53.00
CH-530ZR	Heavy	White	Zipper	18 x 30	\$72.00	\$68.00
CH-530ZR-V	Heavy	Color	Zipper	18 x 30	\$79.00	\$76.00
CB-530ZR	Ballistic	White	Zipper	18 x 30	\$86.00	\$81.00



ZIPPER CLOSURE

18" x 30" MESH BAG • RUBBER CLOSURE • NAME TAG

CAT. NO.	WEIGHT	COLOR	CLOSURE	FLAT SIZE	PRICE/DZ 1-11	PRICE/DZ 12-24
CL-530RC	Medium	White	Rubber	18 x 30	\$67.00	\$54.00
CL-530RC-V	Medium	Color	Rubber	18 x 30	\$63.00	\$59.00
CH-530RC	Heavy	White	Rubber	18 x 30	\$72.00	\$69.30
CH-530RC-V	Heavy	Color	Rubber	18 x 30	\$79.00	\$77.00
CB-530RC	Ballistic	White	Rubber	18 x 30	\$86.00	\$83.00

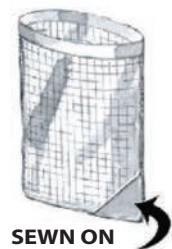


RUBBER CLOSURE

18" x 30" MESH BAG • OPEN TOP • NAME TAG

CAT. NO.	WEIGHT	COLOR	CLOSURE	FLAT SIZE	PRICE/DZ 1-11	PRICE/DZ 12-24
CL-530	Medium	White	Open Top	18 x 30	\$45.00	\$42.00
CL-530-V	Medium	Color	Open Top	18 x 30	\$51.00	\$46.00
CH-530	Heavy	White	Open Top	18 x 30	\$57.00	\$53.00
CH-530-V	Heavy	Color	Open Top	18 x 30	\$61.00	\$58.00
CB-530	Ballistic	White	Open Top	18 x 30	\$68.00	\$64.00

4" Laundry Pins Available. Add \$40.00 Dozen to Above



SEWN ON NAME TAG



MESH BAGS 24" X 30"

Laundry mesh bags are used to collect personal belongings. Most efficient laundering and sorting process. Contents are washed and dried in the bag and returned to the resident.

- Sewn on name tags for proper property markings.
- Available in six sizes and closure styles.
- 100% polyester leno weave construction.

Colors: White, Red, Blue, Green, Yellow, Orange, Brown, Purple, and Black

24" x 30" MESH BAG • DRAW STRING • SPRING LOCK • NAME TAG

CAT. NO.	WEIGHT	COLOR	CLOSURE	FLAT SIZE	PRICE/DZ 1-11	PRICE/DZ 12-24
SL-534DS	Medium	White	Drawstring	24 x 30	\$61.00	\$55.00
SL-534DS-V	Medium	Color	Drawstring	24 x 30	\$66.00	\$62.00
SH-534DS	Heavy	White	Drawstring	24 x 30	\$78.00	\$73.00
SH-534DS-V	Heavy	Color	Drawstring	24 x 30	\$84.00	\$77.00
SB-534DS	Ballistic	White	Drawstring	24 x 30	\$94.00	\$87.00

B-lock Closure Available. Add \$10.00 Dozen to Above

24" x 30" MESH BAG • ZIPPER CLOSURE • NAME TAG

CAT. NO.	WEIGHT	COLOR	CLOSURE	FLAT SIZE	PRICE/DZ 1-11	PRICE/DZ 12-24
CL-534ZR	Medium	White	Zipper	24 x 30	\$61.00	\$56.00
CL-534ZR-V	Medium	Color	Zipper	24 x 30	\$67.00	\$62.00
CH-534ZR	Heavy	White	Zipper	24 x 30	\$82.00	\$76.00
CH-534ZR-V	Heavy	Color	Zipper	24 x 30	\$89.00	\$82.00
CB-534ZR	Ballistic	White	Zipper	24 x 30	\$98.00	\$90.00

24" x 30" MESH BAG • RUBBER CLOSURE • NAME TAG

CAT. NO.	WEIGHT	COLOR	CLOSURE	FLAT SIZE	PRICE/DZ 1-11	PRICE/DZ 12-24
CL-534RC	Medium	White	Rubber	24 x 30	\$62.00	\$59.00
CL-534RC-V	Medium	Color	Rubber	24 x 30	\$68.00	\$63.00
CH-534RC	Heavy	White	Rubber	24 x 30	\$83.00	\$77.00
CH-534RC-V	Heavy	Color	Rubber	24 x 30	\$90.00	\$83.00
CB-534RC	Ballistic	White	Rubber	24 x 30	\$99.00	\$92.00

24" x 30" MESH BAG • OPEN TOP • NAME TAG

CAT. NO.	WEIGHT	COLOR	CLOSURE	FLAT SIZE	PRICE/DZ 1-11	PRICE/DZ 12-24
CL-534	Medium	White	Open Top	24 x 30	\$51.00	\$48.00
CL-534-V	Medium	Color	Open Top	24 x 30	\$59.00	\$55.00
CH-534	Heavy	White	Open Top	24 x 30	\$68.00	\$64.00
CH-534-V	Heavy	Color	Open Top	24 x 30	\$73.00	\$68.00
CB-534	Ballistic	White	Open Top	24 x 30	\$82.00	\$77.00

4" Laundry Pins Available. Add \$40.00 Dozen to Above



SPRING LOCK CLOSURE



B-LOCK CLOSURE



ZIPPER CLOSURE



RUBBER CLOSURE



4" SAFETY PINS



MESH BAGS 24" X 36"

Laundry mesh bags are used to collect personal belongings. Most efficient laundering and sorting process. Contents are washed and dried in the bag and returned to the resident.

- Sewn on name tags for proper property markings.
- Available in six sizes and closure styles.
- 100% polyester leno weave construction.

Colors: White, Red, Blue, Green, Yellow, Orange, Brown, Purple, and Black

24" x 36" MESH BAG • DRAW STRING • SPRING LOCK • NAME TAG

CAT. NO.	WEIGHT	COLOR	CLOSURE	FLAT SIZE	PRICE/DZ 1-11	PRICE/DZ 12-24
SL-536DS	Medium	White	Drawstring	24 x 36	\$66.00	\$61.00
SL-536DS-V	Medium	Color	Drawstring	24 x 36	\$73.00	\$68.00
SH-536DS	Heavy	White	Drawstring	24 x 36	\$86.00	\$82.00
SH-536DS-V	Heavy	Color	Drawstring	24 x 36	\$92.00	\$85.00
SB-536DS	Ballistic	White	Drawstring	24 x 36	\$104.00	\$98.00

B-lock Closure Available. Add \$10.00 Dozen to Above



DRAWSTRING CLOSURE

24" x 36" MESH BAG • ZIPPER CLOSURE • NAME TAG

CAT. NO.	WEIGHT	COLOR	CLOSURE	FLAT SIZE	PRICE/DZ 1-11	PRICE/DZ 12-24
CL-536ZR	Medium	White	Zipper	24 x 36	\$68.00	\$62.00
CL-536ZR-V	Medium	Color	Zipper	24 x 36	\$74.00	\$69.00
CH-536ZR	Heavy	White	Zipper	24 x 36	\$91.00	\$84.00
CH-536ZR-V	Heavy	Color	Zipper	24 x 36	\$98.00	\$92.00
CB-536ZR	Ballistic	White	Zipper	24 x 36	\$109.00	\$101.00



ZIPPER CLOSURE

24" x 36" MESH BAG • RUBBER CLOSURE • NAME TAG

CAT. NO.	WEIGHT	COLOR	CLOSURE	FLAT SIZE	PRICE/DZ 1-11	PRICE/DZ 12-24
CL-536RC	Medium	White	Rubber	24 x 36	\$69.00	\$63.00
CL-536RC-V	Medium	Color	Rubber	24 x 36	\$76.00	\$70.00
CH-536RC	Heavy	White	Rubber	24 x 36	\$92.00	\$85.00
CH-536RC-V	Heavy	Color	Rubber	24 x 36	\$99.00	\$93.00
CB-536RC	Ballistic	White	Rubber	24 x 36	\$110.00	\$102.00

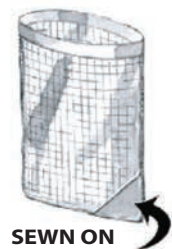


RUBBER CLOSURE

24" x 36" MESH BAG • OPEN TOP • NAME TAG

CAT. NO.	WEIGHT	COLOR	CLOSURE	FLAT SIZE	PRICE/DZ 1-11	PRICE/DZ 12-24
CL-536	Medium	White	Open Top	24 x 36	\$57.00	\$52.00
CL-536-V	Medium	Color	Open Top	24 x 36	\$66.00	\$61.00
CH-536	Heavy	White	Open Top	24 x 36	\$77.00	\$70.00
CH-536-V	Heavy	Color	Open Top	24 x 36	\$82.00	\$77.00
CB-536	Ballistic	White	Open Top	24 x 36	\$92.00	\$85.00

4" Laundry Pins Available. Add \$40.00 Dozen to Above



SEWN ON NAME TAG



MESH BAGS 30" X 40"

Laundry mesh bags are used to collect personal belongings. Most efficient laundering and sorting process. Contents are washed and dried in the bag and returned to the resident.

- Sewn on name tags for proper property markings.
- Available in six sizes and closure styles.
- 100% polyester leno weave construction.

Colors: White, Red, Blue, Green, Yellow, Orange, Brown, Purple, and Black

30" x 40" MESH BAG • DRAW STRING • SPRING LOCK • NAME TAG

CAT. NO.	WEIGHT	COLOR	CLOSURE	FLAT SIZE	PRICE/DZ 1-11	PRICE/DZ 12-24
SL-540DS	Medium	White	Drawstring	30 x 40	\$78.00	\$70.00
SL-540DS-V	Medium	Color	Drawstring	30 x 40	\$87.00	\$80.00
SH-540DS	Heavy	White	Drawstring	30 x 40	\$99.00	\$93.00
SH-540DS-V	Heavy	Color	Drawstring	30 x 40	\$114.00	\$107.00
SB-540DS	Ballistic	White	Drawstring	30 x 40	\$119.00	\$112.00

B-lock Closure Available. Add \$10.00 Dozen to Above

30" x 40" MESH BAG • ZIPPER CLOSURE • NAME TAG

CAT. NO.	WEIGHT	COLOR	CLOSURE	FLAT SIZE	PRICE/DZ 1-11	PRICE/DZ 12-24
CL-540ZR	Medium	White	Zipper	30 x 40	\$81.00	\$72.00
CL-540ZR-V	Medium	Color	Zipper	30 x 40	\$89.00	\$82.00
CH-540ZR	Heavy	White	Zipper	30 x 40	\$104.00	\$96.00
CH-540ZR-V	Heavy	Color	Zipper	30 x 40	\$120.00	\$113.00
CB-540ZR	Ballistic	White	Zipper	30 x 40	\$125.00	\$115.00

30" x 40" MESH BAG • RUBBER CLOSURE • NAME TAG

CAT. NO.	WEIGHT	COLOR	CLOSURE	FLAT SIZE	PRICE/DZ 1-11	PRICE/DZ 12-24
CL-540RC	Medium	White	Rubber	30 x 40	\$82.00	\$73.00
CL-540RC-V	Medium	Color	Rubber	30 x 40	\$90.00	\$83.00
CH-540RC	Heavy	White	Rubber	30 x 40	\$105.00	\$97.00
CH-540RC-V	Heavy	Color	Rubber	30 x 40	\$121.00	\$113.00
CB-540RC	Ballistic	White	Rubber	30 x 40	\$126.00	\$117.00

30" x 40" MESH BAG • OPEN TOP • NAME TAG

CAT. NO.	WEIGHT	COLOR	CLOSURE	FLAT SIZE	PRICE/DZ 1-11	PRICE/DZ 12-24
CL-540	Medium	White	Open Top	30 x 40	\$69.00	\$64.00
CL-540-V	Medium	Color	Open Top	30 x 40	\$79.00	\$72.00
CH-540	Heavy	White	Open Top	30 x 40	\$89.00	\$83.00
CH-540-V	Heavy	Color	Open Top	30 x 40	\$103.00	\$97.00
CB-540	Ballistic	White	Open Top	30 x 40	\$107.00	\$99.00

4" Laundry Pins Available. Add \$40.00 Dozen to Above



SPRING LOCK CLOSURE



B-LOCK CLOSURE



ZIPPER CLOSURE



RUBBER CLOSURE

MESH BAG EXTRAS

CAT. NO.	DESCRIPTION	PRICE/DZ
RC-1	Rubber Closure	\$24.00
BL-1	B-lock Closure	\$10.00
SL-1	Spring Lock Closure	\$10.00
NT-1	Name Tag	\$9.00
LP-1	4" Laundry Pin	\$40.00



BLANKETS/BEDSPREAD



100% COTTON SNAG-FREE BLANKETS AND BEDSPREADS

Description:

- Tightly woven to eliminate snags and pulls
- Holds body heat better
- Heavier weight for warmth and durability
- Woven block pattern, hemmed all-around with double needle stitching
- Tumble dried, Preshrunk and Autoclavable
- Bleached white and Vat dyed colors



THERMAL BLANKETS – 66" X 90" – 100% COTTON

SNAG FREE • HEAVIER WEIGHT • PRE-SHRUNK • AUTOCLAVABLE

CAT NO.	DESCRIPTION	SIZE	WEIGHT	BLEND	COLOR	CASE PACK	PRICE.
502532	THERMAL BLANKET	66 x 90	3.0 LBS	100% COTTON	WHITE	12 EA.	\$9.35 EA.
502533	THERMAL BLANKET	66 x 90	3.0 LBS	100% COTTON	CHAMPAGNE	12 EA.	\$13.35 EA.
502534	THERMAL BLANKET	66 x 90	3.0 LBS	100% COTTON	BLUE	12 EA.	\$13.35 EA.
502535	THERMAL BLANKET	66 x 90	3.0 LBS	100% COTTON	RASPBERRY	12 EA.	\$13.35 EA.
502536	THERMAL BLANKET	66 x 90	3.0 LBS	100% COTTON	TEAL	12 EA.	\$13.35 EA.

THERMAL BEDSPREADS – 74" X 96" – 100% COTTON

SNAG FREE • HEAVIER WEIGHT • PRE-SHRUNK • AUTOCLAVABLE

CAT NO.	DESCRIPTION	SIZE	WEIGHT	BLEND	COLOR	CASE PACK	PRICE.
502537	THERMAL SPREAD	74 x 96	3.9 LBS	100% COTTON	WHITE	12 EA.	\$14.60 EA.
502538	THERMAL SPREAD	74 x 96	3.9 LBS	100% COTTON	CHAMPAGNE	12 EA.	\$17.30 EA.
502540	THERMAL SPREAD	74 x 96	3.9 LBS	100% COTTON	BLUE	12 EA.	\$17.30 EA.
502541	THERMAL SPREAD	74 x 96	3.9 LBS	100% COTTON	RASPBERRY	12 EA.	\$17.30 EA.
502542	THERMAL SPREAD	74 x 96	3.9 LBS	100% COTTON	TEAL	12 EA.	\$17.30 EA.

THERMAL BEDSPREADS – 74" X 108" – 100% COTTON

SNAG FREE • HEAVIER WEIGHT • PRE-SHRUNK • AUTOCLAVABLE

CAT NO.	DESCRIPTION	SIZE	WEIGHT	BLEND	COLOR	CASE PACK	PRICE.
502543	THERMAL SPREAD	74 x 108	4.3 LBS	100% COTTON	WHITE	12 EA.	\$16.15 EA.
502544	THERMAL SPREAD	74 x 108	4.3 LBS	100% COTTON	CHAMPAGNE	12 EA.	\$18.85 EA.
502545	THERMAL SPREAD	74 x 108	4.3 LBS	100% COTTON	BLUE	12 EA.	\$18.85 EA.
502546	THERMAL SPREAD	74 x 108	4.3 LBS	100% COTTON	RASPBERRY	12 EA.	\$18.85 EA.
502547	THERMAL SPREAD	74 x 108	4.3 LBS	100% COTTON	TEAL	12 EA.	\$18.85 EA.



BLANKETS/BEDSPREAD

BLENDED SNAG-FREE BLANKETS AND BEDSPREADS

Description:

- 55% Cotton 45% Polyester
- Tightly woven to eliminate snags and pulls
- Holds body heat better
- Heavier weight for warmth and durability
- Classic square in square pattern, hemmed with double needle stitching on ends
- Tumble dried, Preshrunk and Autoclavable
- Bleached white and Vat dyed colors



THERMAL BLANKETS – 66" X 90" – 55% COTTON / 45% POLYESTER

SNAG FREE • HEAVIER WEIGHT • PRE-SHRUNK • AUTOCLAVABLE

CAT NO.	DESCRIPTION	SIZE	WEIGHT	BLEND	COLOR	CASE PACK	PRICE.
601074	THERMAL BLANKET	66 x 90	2.5 LBS	COTTON/POLY	WHITE	12 EA.	\$10.20 EA.
601075	THERMAL BLANKET	66 x 90	2.5 LBS	COTTON/POLY	CHAMPAGNE	12 EA.	\$12.15 EA.
601076	THERMAL BLANKET	66 x 90	2.5 LBS	COTTON/POLY	BLUE	12 EA.	\$12.15 EA.
602419	THERMAL BLANKET	66 x 90	2.5 LBS	COTTON/POLY	RASPBERRY	12 EA.	\$12.15 EA.
602420	THERMAL BLANKET	66 x 90	2.5 LBS	COTTON/POLY	TEAL	12 EA.	\$12.15 EA.

THERMAL BEDSPREADS – 74" X 96" – 55% COTTON / 45% POLYESTER

SNAG FREE • HEAVIER WEIGHT • PRE-SHRUNK • AUTOCLAVABLE

CAT NO.	DESCRIPTION	SIZE	WEIGHT	BLEND	COLOR	CASE PACK	PRICE.
601079	THERMAL SPREAD	74 x 96	3.4 LBS	COTTON/POLY	WHITE	12 EA.	\$13.35 EA.
601080	THERMAL SPREAD	74 x 96	3.4 LBS	COTTON/POLY	CHAMPAGNE	12 EA.	\$16.15 EA.
601081	THERMAL SPREAD	74 x 96	3.4 LBS	COTTON/POLY	BLUE	12 EA.	\$16.15 EA.
602421	THERMAL SPREAD	74 x 96	3.4 LBS	COTTON/POLY	RASPBERRY	12 EA.	\$16.15 EA.
602422	THERMAL SPREAD	74 x 96	3.4 LBS	COTTON/POLY	TEAL	12 EA.	\$16.15 EA.

THERMAL BEDSPREADS – 74" X 108" – 55% COTTON / 45% POLYESTER

SNAG FREE • HEAVIER WEIGHT • PRE-SHRUNK • AUTOCLAVABLE

CAT NO.	DESCRIPTION	SIZE	WEIGHT	BLEND	COLOR	CASE PACK	PRICE.
602423	THERMAL SPREAD	74 x 108	3.9 LBS	COTTON/POLY	WHITE	12 EA.	\$14.85 EA.
602424	THERMAL SPREAD	74 x 108	3.9 LBS	COTTON/POLY	CHAMPAGNE	12 EA.	\$18.15 EA.
602425	THERMAL SPREAD	74 x 108	3.9 LBS	COTTON/POLY	BLUE	12 EA.	\$18.15 EA.
602426	THERMAL SPREAD	74 x 108	3.9 LBS	COTTON/POLY	RASPBERRY	12 EA.	\$18.15 EA.
602427	THERMAL SPREAD	74 x 108	3.9 LBS	COTTON/POLY	TEAL	12 EA.	\$18.15 EA.



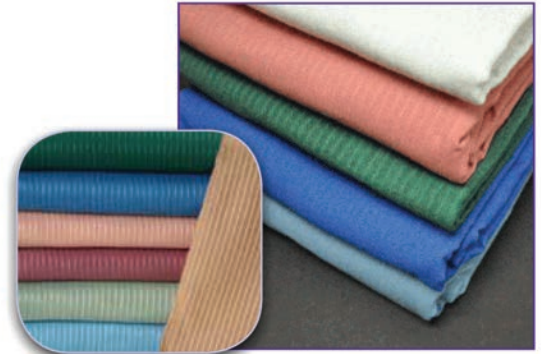
BLANKETS/BEDSPREAD



RIBCORD BEDSPREADS

Description:

- 55% Cotton 45% Polyester blended for greater durability and quicker drying time
- Square corners
- Vat dyed for color fastness. Colors resistant to fading especially in harsh institutional environments
- Machine wash, tumble dry



RIBCORD BEDSPREADS – 76" x 110" – 55% COTTON / 45% POLYESTER

TWIN SIZE • DURABLE • WASHABLE • QUICK DRYING TIME

CAT NO.	DESCRIPTION	SIZE	WEIGHT	BLEND	COLOR	CASE PACK	PRICE.
802495	CORDED BEDSPREAD	76 x 110	2.5 LBS	COTTON/POLY	ROYAL BLUE	12 EA.	\$15.50 EA.
801539	CORDED BEDSPREAD	76 x 110	2.5 LBS	COTTON/POLY	WEDGEWOOD BLUE	12 EA.	\$15.50 EA.
801542	CORDED BEDSPREAD	76 x 110	2.5 LBS	COTTON/POLY	RASPBERRY	12 EA.	\$15.50 EA.
801541	CORDED BEDSPREAD	76 x 110	2.5 LBS	COTTON/POLY	SAGE	12 EA.	\$15.50 EA.
801543	CORDED BEDSPREAD	76 x 110	2.5 LBS	COTTON/POLY	BEIGE	12 EA.	\$15.50 EA.
802496	CORDED BEDSPREAD	76 x 110	2.5 LBS	COTTON/POLY	HUNTER	12 EA.	\$15.50 EA.
802498	CORDED BEDSPREAD	76 x 110	2.5 LBS	COTTON/POLY	ROSE	12 EA.	\$15.50 EA.
802497	CORDED BEDSPREAD	76 x 110	2.5 LBS	COTTON/POLY	WHITE	12 EA.	\$14.80 EA.

100% POLYESTER BLANKETS

Description:

- 100% Polyester
- Durable and Comfortable
- Machine Wash/Dry
- Value Price
- Great for Camps and Shelters
- Overstitched Ends



CAT NO.	DESCRIPTION	SIZE	COLOR	CASE PACK	PRICE
PB7290C	POLYESTER BED SPREAD FULL	72 x 90	CAMEL	12	\$11.00 EA.
PB7290B	POLYESTER BED SPREAD FULL	72 x 90	BLUE	12	\$11.00 EA.
PB8090C	POLYESTER BED SPREAD TWIN	80 x 90	CAMEL	12	\$13.20 EA.
PB8090B	POLYESTER BED SPREAD TWIN	80 x 90	BLUE	12	\$13.20 EA.
PB9090C	POLYESTER BED SPREAD QUEEN	90 x 90	CAMEL	10	\$14.10 EA.
PB9090B	POLYESTER BED SPREAD QUEEN	90 x 90	BLUE	10	\$14.10 EA.
PB10890C	POLYESTER BED SPREAD KING	108 x 90	CAMEL	8	\$16.55 EA.
PB10890B	POLYESTER BED SPREAD KING	108 x 90	BLUE	8	\$16.55 EA.



BLANKETS



BABY BLANKETS



BLEACHED
BATH BLANKET



UNBLEACHED
BATH BLANKET



LENO WEAVE PATTERN

BATH BLANKETS – 70" x 90"

DURABLE • HIGHLY ABSORBANT • COMFORTABLE FEEL

CAT NO.	DESCRIPTION	SIZE	WEIGHT	BLEND	COLOR	CASE PACK	PRICE.
200698	BATH BLANKET	70 x 90	1.4 LBS	100% COTTON	UNBLEACHED	60 EA.	\$4.85 EA.
200699	BATH BLANKET	70 x 90	1.4 LBS	COTTON/POLY	UNBLEACHED	60 EA.	\$4.85 EA.
201527	BATH BLANKET	70 x 90	1.75 LBS	COTTON/POLY	UNBLEACHED	60 EA.	\$5.35 EA.
206850	BATH BLANKET	70 x 90	1.75 LBS	COTTON/POLY	BLEACHED	36 EA.	\$7.75 EA.
207777	BATH BLANKET	70 x 90	2.0 LBS	COTTON/POLY	WHITE/BLUE STRIPE	36 EA.	\$8.25 EA.

BABY BLANKETS – WHITE WITH PINK & BLUE STRIPE

DURABLE • HIGHLY ABSORBANT • COMFORTABLE FEEL

CAT NO.	DESCRIPTION	SIZE	WEIGHT	BLEND	COLOR	CASE PACK	PRICE.
200720	BABY BLANKET	30 x 40	3.3 LBS	100% COTTON	PINK/BLUE STRIPES	25 DZ.	\$19.20 DZ.

THERMAL BLANKETS – 66" X 90" – 100% COTTON

LENO WEAVE • PRE-SHRUNK • AUTOCLAVABLE • TUMBLE DRY

CAT NO.	DESCRIPTION	SIZE	WEIGHT	BLEND	COLOR	CASE PACK	PRICE.
306060	THERMAL BLANKET	66 x 90	2.0 LBS	100% COTTON	WHITE	50 EA.	\$7.25 EA.
306061	THERMAL BLANKET	66 x 90	2.5 LBS	100% COTTON	WHITE	36 EA.	\$8.75 EA.

THERMAL BLANKETS – 66" X 90" – 100% COTTON

SNAG FREE • PRE-SHRUNK • AUTOCLAVABLE

CAT NO.	DESCRIPTION	SIZE	WEIGHT	BLEND	COLOR	CASE PACK	PRICE.
405745	THERMAL BLANKET	66 x 90	2.5 LBS	100% COTTON	WHITE	24 EA.	\$8.75 EA.
406635	THERMAL BLANKET	66 x 90	2.1 LBS	100% COTTON	WHITE	50 EA.	\$7.70 EA.
406636	THERMAL BLANKET	66 x 90	2.5 LBS	100% COTTON	NATURAL	50 EA.	\$8.35 EA.



BLANKETS



COTTON THERMAL BLANKETS

Description:

- 100% Cotton
- Loom woven with a honey comb textured pattern
- Tightly woven to reduce snags
- Heavier weight for warmth, comfort and durability
- Vat dyed for color fastness. Colors resistant to fading especially in harsh institutional environments
- Self hemmed
- Machine wash, tumble dry



HONEY COMB THERMAL BLANKETS – 66" x 90" – 100% COTTON

TWIN SIZE • SNAG FREE • HEAVIER WEIGHT • TIGHTLY WOVEN

CAT NO.	DESCRIPTION	SIZE	WEIGHT	BLEND	COLOR	CASE PACK	PRICE.
702905	HONEY COMB BLANKET	66 x 90	3.7 LBS	100% COTTON	WHITE	4 EA.	\$16.15 EA.
702906	HONEY COMB BLANKET	66 x 90	3.7 LBS	100% COTTON	NATURAL	4 EA.	\$17.70 EA.
702907	HONEY COMB BLANKET	66 x 90	3.7 LBS	100% COTTON	BLUE	4 EA.	\$17.70 EA.
702908	HONEY COMB BLANKET	66 x 90	3.7 LBS	100% COTTON	ROSE	4 EA.	\$17.70 EA.

HONEY COMB THERMAL BLANKETS – 80" x 90" – 100% COTTON

FULL SIZE • SNAG FREE • HEAVIER WEIGHT • TIGHTLY WOVEN

CAT NO.	DESCRIPTION	SIZE	WEIGHT	BLEND	COLOR	CASE PACK	PRICE.
702909	HONEY COMB BLANKET	80 x 90	4.5 LBS	100% COTTON	WHITE	4 EA.	\$19.25 EA.
702910	HONEY COMB BLANKET	80 x 90	4.5 LBS	100% COTTON	NATURAL	4 EA.	\$20.80 EA.
702911	HONEY COMB BLANKET	80 x 90	4.5 LBS	100% COTTON	BLUE	4 EA.	\$20.80 EA.
702912	HONEY COMB BLANKET	80 x 90	4.5 LBS	100% COTTON	ROSE	4 EA.	\$20.80 EA.

HONEY COMB THERMAL BLANKETS – 90" x 90" – 100% COTTON

QUEEN SIZE • SNAG FREE • HEAVIER WEIGHT • TIGHTLY WOVEN

CAT NO.	DESCRIPTION	SIZE	WEIGHT	BLEND	COLOR	CASE PACK	PRICE.
702913	HONEY COMB BLANKET	90 x 90	5.1 LBS	100% COTTON	WHITE	2 EA.	\$22.30 EA.
702914	HONEY COMB BLANKET	90 x 90	5.1 LBS	100% COTTON	NATURAL	2 EA.	\$23.85 EA.
702915	HONEY COMB BLANKET	90 x 90	5.1 LBS	100% COTTON	BLUE	2 EA.	\$23.85 EA.
702916	HONEY COMB BLANKET	90 x 90	5.1 LBS	100% COTTON	ROSE	2 EA.	\$23.85 EA.

HONEY COMB THERMAL BLANKETS – 108" x 90" – 100% COTTON

KING SIZE • SNAG FREE • HEAVIER WEIGHT • TIGHTLY WOVEN

CAT NO.	DESCRIPTION	SIZE	WEIGHT	BLEND	COLOR	CASE PACK	PRICE.
702917	HONEY COMB BLANKET	108 x 90	6.1 LBS	100% COTTON	WHITE	2 EA.	\$25.40 EA.
702918	HONEY COMB BLANKET	108 x 90	6.1 LBS	100% COTTON	NATURAL	2 EA.	\$26.95 EA.
702919	HONEY COMB BLANKET	108 x 90	6.1 LBS	100% COTTON	BLUE	2 EA.	\$26.95 EA.
702920	HONEY COMB BLANKET	108 x 90	6.1 LBS	100% COTTON	ROSE	2 EA.	\$26.95 EA.



MELT AWAY BAGS / SCALES

WATER SOLUBLE "MELT-AWAY" BAGS

Features:

- Collection of contaminated linen.
- Dissolves during normal wash cycle.
- Holds damp linen.
- Embossed film for easy opening: no sticking.
- Individually folded for easy storage and distribution.
- Shrink- wrapped inner packs for prolonged shelf-life.



STANDARD DUTY HOT WATER SOLUBLE BAGS CLEAR

CAT. NO.	SIZE	DESCRIPTION	CASE PACK	PRICE EACH
6452	26 X 33	ISOLATION	100/CASE	\$81.00 CS.
6458	28 X 39	FITS 18" STANDS	100/CASE	\$101.00 CS.
6459	36 X 39	FITS 25" STANDS	100/CASE	\$132.00 CS.

HEAVY DUTY HOT WATER SOLUBLE BAGS CLEAR

CAT. NO.	SIZE	DESCRIPTION	CASE PACK	PRICE EACH
7450	19 X 22	ISOLATION	100/CASE	\$64.00 CS.
7452	26 X 33	ISOLATION	100/CASE	\$113.00 CS.
7458	28 X 39	FITS 18" STANDS	100/CASE	\$146.00 CS.
7459	36 X 39	FITS 25" STANDS	100/CASE	\$189.00 CS.

HEAVY DUTY COLD WATER SOLUBLE BAGS CLEAR

CAT. NO.	SIZE	DESCRIPTION	CASE PACK	PRICE EACH
8452	26 X 33	ISOLATION	100/CASE	\$113.00 CS.

RED STANDARD DUTY HOT WATER SOLUBLE BAGS

CAT. NO.	SIZE	DESCRIPTION	CASE PACK	PRICE EACH
9452	26 X 33	ISOLATION	100/CASE	\$81.00 CS.
9458	28 X 39	FITS 18" STANDS	100/CASE	\$102.00 CS.

PRINTED "BIOHAZARD" HOT WATER SOLUBLE BAGS

CAT. NO.	SIZE	DESCRIPTION	CASE PACK	PRICE EACH
5459	36 X 39	CLEAR, FITS 25" STANDS	100/CASE	\$132.00 CS.

MOBILE LAUNDRY SCALE 249 LBS CAPACITY

Features:

- The heavy-duty tubular base is sturdy chrome.
- 6 Bushel blue poly tub size: 33 1/2" L x 19 3/4" W x 18 1/2" D.
- The scale visible from the front of the unit without stooping.
- This unit has handles on both ends for superior mobility.
- Ships UPS/FedEx knocked-down for a great freight savings.
- Overall Size: 40" L x 20" W x 36" H.
- Not Legal for trade.



CAT. NO.	CAPACITY	PRICE EACH
LSM249	249 LB	\$560.00

ANALOG LAUNDRY SCALE 40 LBS CAPACITY

Features:

- A basic mechanical dial scale.
- Not legal for trade.
- Heavy-duty almond copolymer coated wire basket.
- Basket Dimensions are: 26 3/4" L x 20" W x 11" D.



CAT. NO.	CAPACITY	PRICE EACH
LSA40	40 LB	\$269.00

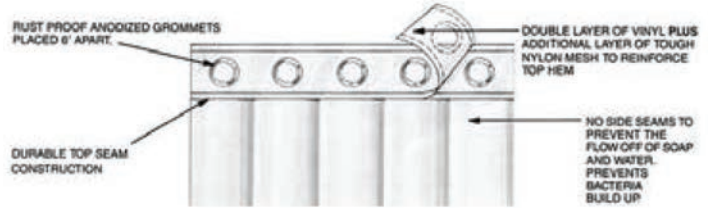


SHOWER CURTAINS

Shower Curtains Vinyl

Features:

- Mildew resistant • Smooth Rustproof Aluminium Grommets.
- No Side Bindings or bottom Hem: to accumulate soap or bacteria.



HEAVY WEIGHT • 10 GAUGE VINYL

CAT NO.	SIZE	DESCRIPTION	CASE PACK	PRICE EACH
SCH3672	36"x72"	Heavy Weight	24 Each	\$5.85
SCH4872	48"x72"	Heavy Weight	18 Each	\$8.20
SCH7272	72"x72"	Heavy Weight	12 Each	\$9.70

Color: White, Beige

DURABLE WEIGHT • 8 GAUGE VINYL

CAT NO.	SIZE	DESCRIPTION	CASE PACK	PRICE EACH
SCD3672	36"x72"	Durable Weight	24 Each	\$5.70
SCD7272	72"x72"	Durable Weight	12 Each	\$9.60

Color: White, Beige, Frosty

MEDIUM WEIGHT • 6 GAUGE VINYL

CAT NO.	SIZE	DESCRIPTION	CASE PACK	PRICE EACH
SCM3672	36"x72"	Medium Weight	24 Each	\$4.35
SCM4872	48"x72"	Medium Weight	18 Each	\$6.15
SCM7272	72"x72"	Medium Weight	12 Each	\$7.30

Color: White, Beige

SERVICE WEIGHT • 5 GAUGE VINYL

CAT NO.	SIZE	DESCRIPTION	CASE PACK	PRICE EACH
SCS3672	36"x72"	Service Weight	24 Each	\$4.20
SCS7272	72"x72"	Service Weight	12 Each	\$7.00

Color: White, Frosty, Beige

LINER • 3 GAUGE VINYL W/BOTTOM MAGNETS

CAT NO.	SIZE	DESCRIPTION	CASE PACK	PRICE EACH
SCL7272	72"x72"	Liner Weight	24 Each	\$4.70

Color: White

Flame Retardant Vinyl Shower Curtains

Features:

- Meets NFPA #701 Flame Retardant Standard.
- 8 Gauge & 10 Gauge Vinyl
- Color: White, Beige

10 GAUGE VINYL FLAME RETARDANT

CAT NO.	SIZE	DESCRIPTION	CASE PACK	PRICE EACH
SHV3672FR	36"x72"	10 Gauge	24 Each	\$7.70
SHV7272FR	72"x72"	10 Gauge	12 Each	\$12.85

Color: White, Beige

8 GAUGE VINYL FLAME RETARDANT

CAT NO.	SIZE	DESCRIPTION	CASE PACK	PRICE EACH
SCV3672FR	36"x72"	8 Gauge	24 Each	\$6.60
SCV7272FR	72"x72"	8 Gauge	12 Each	\$10.95

Color: White, Beige



SHOWER CURTAINS



8 GAUGE VINYL HOOK-LESS SHOWER CURTAINS

CAT NO.	SIZE	DESCRIPTION	CASE PACK	PRICE EACH
HLV7274	72"x74"	WHITE No Window	12 Each	\$15.60
HLV7277W	72"x77"	Grey Window Included	12 Each	\$16.30

Color: White, Grey

NYLON HOOK-LESS SHOWER CURTAINS

CAT NO.	SIZE	DESCRIPTION	CASE PACK	PRICE EACH
HLN7274	72"x74"	No Window	12 Each	\$24.00

Color: White



POLYESTER HOOK-LESS SHOWER CURTAINS

CAT NO.	SIZE	DESCRIPTION	CASE PACK	PRICE EACH
HLP7274	72"x74"	No Window	12 Each	\$17.70
HLP7277W	72"x74"	Window Included	12 Each	\$22.10

Color: White



POLYESTER DYNASTY HOOK-LESS SHOWER CURTAINS

CAT NO.	SIZE	DESCRIPTION	CASE PACK	PRICE EACH
HPD7274	72"x74"	No Window	12 Each	\$20.60
HPD7274W	72"x74"	With Window	12 Each	\$22.70



SHOWER CURTAINS



NYLON SHOWER CURTAINS

Features:

- Made of 200 Denier Nylon.
- Water-repellent, mildew resistant, long wearing.
- Machine wash, water and stain resistant. • Color: White

CAT NO.	SIZE	DESCRIPTION	CASE PACK	PRICE EACH
SCN3672	36"x72"	Nylon	24 Each	\$12.60
SCN7272	72"x72"	Nylon	12 Each	\$20.95

POLYESTER SHOWER CURTAINS

Features:

- Made of 100% Polyester. • Water-repellent, mildew resistant, long wearing. Machine wash, water and stain resistant.
- Specify Color: White, Beige

CAT NO.	SIZE	DESCRIPTION	CASE PACK	PRICE EACH
SCP3672	36"x72"	Polyester	24 Each	\$11.00
SCP7272	72"x72"	Polyester	12 Each	\$18.35



FLAME RETARDANT POLYESTER SHOWER CURTAINS

Features:

- Meets NFPA #701 Flame Retardant Standard. • 100% Polyester
- Color: White, Beige

CAT NO.	SIZE	CASE PACK	PRICE EACH
SCP3672FR	36"x72"	24 Each	\$14.00
SCP7272FR	72"x72"	12 Each	\$23.30



DOBBIE POLYESTER SHOWER CURTAINS

Features:

- Made of Dobbie Polyester. • Water-repellent, mildew resistant, long wearing. Machine wash, water and stain resistant.
- Specify Color: White, Beige, Blue, Gray, Jade, Bayberry

CAT NO.	SIZE	DESCRIPTION	CASE PACK	PRICE EACH
SPD3672	36"x72"	Dobbie Polyester	24 Each	\$11.60
SPD7272	72"x72"	Dobbie Polyester	12 Each	\$19.30



SHOWER CURTAINS

POLYESTER WAFFLE SHOWER CURTAIN WITH 10" WINDOW

CAT NO.	SIZE	CASE PACK	PRICE EACH
SPW7272W	72"x72"	12 Each	\$27.30
SPW7278W	72"x78"	12 Each	\$28.60

Color: White



POLYESTER RIB SHOWER CURTAINS

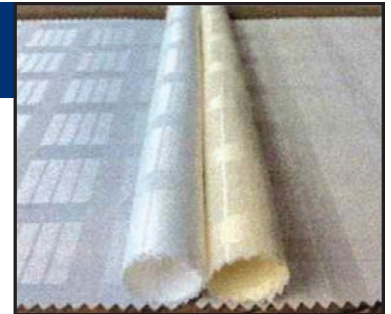
CAT NO.	SIZE	CASE PACK	PRICE EACH
SPR3672	36"x72"	24 Each	\$12.10
SPR7272	72"x72"	12 Each	\$28.15

Color: White, Navy

POLYESTER DYNASTY SHOWER CURTAINS

CAT NO.	SIZE	CASE PACK	PRICE EACH
SPD3672	36"x72"	24 Each	\$12.30
SPD7272	72"x72"	12 Each	\$20.45

Color: White, Beige



POLYESTER MILLENIUM SHOWER CURTAINS

CAT NO.	SIZE	CASE PACK	PRICE EACH
SPM3672	36"x72"	24 Each	\$14.70
SPM7272	72"x72"	12 Each	\$24.60

Color: White, Brown, Dune

SATIN SHOWER CURTAINS

CAT NO.	SIZE	CASE PACK	PRICE EACH
SSB3672	36"x72"	24 Each	\$14.60
SSB7272	72"x72"	12 Each	\$24.30

Color: White



SHOWER CURTAINS



FLAME RETARDANT SURE CHECK ANTI-MICROBIAL SHOWER CURTAINS

Features:

- Meets NFPA #701 Flame Retardant Standard.
- Color: White, Beige, Blue, Green, Gray

CAT NO.	SIZE	CASE PACK	PRICE EACH
SUC3672FR	36"x72"	12 Each	\$17.50
SUC7272FR	72"x72"	6 Each	\$29.15



FLAME RETARDANT REINFORCED VINYL SHOWER CURTAINS

Features:

- Meets NFPA #701 Flame Retardant Standard.
- Reinforced Vinyl
- Color: Navy, Red, Royal, Spruce

CAT NO.	SIZE	CASE PACK	PRICE EACH
SRV3672FR	36"x72"	12 Each	\$16.80
SRV7272FR	72"x72"	6 Each	\$27.95

FLAME RETARDANT WAFFLE POLYESTER SHOWER CURTAINS

Features:

- Meets NFPA #701 Flame Retardant Standard.
- Waffle Polyester
- Color: White

CAT NO.	SIZE	CASE PACK	PRICE EACH
SWP3672FR	36"x72"	24 Each	\$23.20
SWP7272FR	72"x72"	12 Each	\$38.70



100% COTTON SHOWER CURTAINS

CAT NO.	SIZE	DESCRIPTION	CASE PACK	PRICE EACH
SCD3672	36"x72"	Cotton Water Repellant	24 Each	\$21.65
SCD7272	72"x72"	Cotton Water Repellant	12 Each	\$36.10

Color: White, Beige



SHOWER CURTAINS

SHOWER HOOKS



Stainless Steel with 5 ABS Nickel Plated Rollers.
1 10/16" Diameter and 2 3/4" Length. Fits 1 1/2" size rods.

CAT. NO.	PRICE DZ
HSS367	\$17.60



Stainless Steel with 4 ABS Nickel Plated Rollers.
1 5/16" Diameter and 2 1/2" Length. Fits 1" size rods.

CAT. NO.	PRICE DZ
HSS267	\$16.60



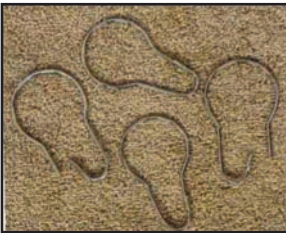
Heavy Grip Chrome Plated Steel Open End
Snap Fit w/5 Ball Rollers.

CAT. NO.	PRICE DZ
HPS523	\$20.40



Large Chrome Pin Style.
Fits 1 1/2" rods.

CAT. NO.	PRICE DZ
HC366	\$15.20



STANDARD CHROME PIN

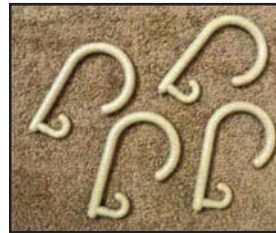
CAT. NO.	PRICE DZ
HC3111	\$2.75



PLASTIC TEAR DROP

CAT. NO.	PRICE DZ
HP822	\$3.85

Colors: White, Beige, Clear.



PLASTIC OPEN END

CAT. NO.	PRICE DZ
HP6111	\$4.50

Colors: White, Beige, Clear.



PLASTIC ROUND HOOKS

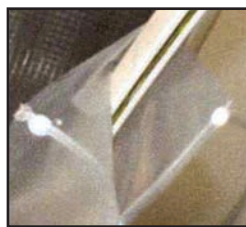
CAT. NO.	PRICE DZ
HP8211	\$4.50

Colors: White, Beige, Clear.

SHOWER CURTAIN OPTIONS – CALL FOR PRICING



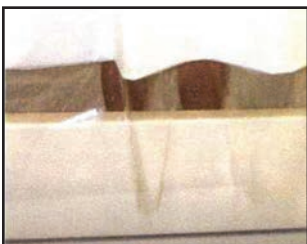
VELCRO LOOP TOP



POCKET HEADER
Curtain top wraps around length of rod



CLEAR VINYL VIEW TOP



**CLEAR VINYL VIEW
BOTTOM**



SNAP LOOP



**MESH TOP WITH
BREAKAWAY VELCRO BODY**



BED BUGS COVERS



ZIPPERED SIX GAUGE VINYL

Description:

- Antimicrobial Treatment - Retards growth of mold, mildew and fungi.
- Heavyweight Vinyl.
- Easy Care, Wipe clean with damp cloth.
- Zippered covers with self locking, rust-proof polyester zippers.
- Electronically sealed seams.
- Independently tested and certified to be bedbug proof. Test results available upon request.



ZIPPERED PILLOW COVERS - CERTIFIED BEDBUG PROOF

6 GAUGE VINYL • FLAME RETARDANT • ANTIMICROBIAL • WATERPROOF

CAT NO.	DESCRIPTION	SIZE	MATERIAL	CASE PACK	PRICE.
PZ62127	STANDARD SIZE	21 x 27	6 GU VINYL	12 EA.	\$2.45 EA.
PZ62131	QUEEN SIZE	21 x 31	6 GU VINYL	12 EA.	\$2.80 EA.
PZ62137	KING SIZE	21 x 37	6 GU VINYL	12 EA.	\$3.10 EA.

ZIPPERED MATTRESS COVERS - CERTIFIED BEDBUG PROOF

6 GAUGE VINYL • 9" DEEP • FLAME RETARDANT • ANTIMICROBIAL • WATERPROOF

CAT NO.	DESCRIPTION	SIZE	MATERIAL	CASE PACK	PRICE.
MZ639759	TWIN SIZE	39 x 75 x 9	6 GU VINYL	6 EA.	\$11.90 EA.
MZ639809	TWIN SIZE XL	39 x 80 x 9	6 GU VINYL	6 EA.	\$12.85 EA.
MZ654759	FULL SIZE	54 x 75 x 9	6 GU VINYL	6 EA.	\$14.45 EA.
MZ654809	FULL SIZE XL	54 x 80 x 9	6 GU VINYL	6 EA.	\$15.30 EA.
MZ660809	QUEEN SIZE	60 x 80 x 9	6 GU VINYL	6 EA.	\$17.10 EA.
MZ78809	KING SIZE	78 x 80 x 9	6 GU VINYL	6 EA.	\$22.10 EA.
MZ672849	CAL-KING SIZE	72 x 84 x 9	6 GU VINYL	6 EA.	\$22.10 EA.
MZ672809	HOTEL KING SIZE	72 x 80 x 9	6 GU VINYL	6 EA.	\$22.10 EA.
MZ636809	HOSP TWIN	36 x 80 x 9	6 GU VINYL	6 EA.	\$12.40 EA.
MZ636849	HOSP TWIN XL	36 x 84 x 9	6 GU VINYL	6 EA.	\$14.45 EA.

ZIPPERED MATTRESS COVERS - CERTIFIED BEDBUG PROOF

6 GAUGE VINYL • 12" DEEP • FLAME RETARDANT • ANTIMICROBIAL • WATERPROOF

CAT NO.	DESCRIPTION	SIZE	MATERIAL	CASE PACK	PRICE.
MZ6397512	TWIN SIZE	39 x 75 x 12	6 GU VINYL	6 EA.	\$14.45 EA.
MZ6398012	TWIN SIZE XL	39 x 80 x 12	6 GU VINYL	6 EA.	\$16.10 EA.
MZ6547512	FULL SIZE	54 x 75 x 12	6 GU VINYL	6 EA.	\$17.70 EA.
MZ6548012	FULL SIZE XL	54 x 80 x 12	6 GU VINYL	6 EA.	\$18.85 EA.
MZ6608012	QUEEN SIZE	60 x 80 x 12	6 GU VINYL	6 EA.	\$19.95 EA.
MZ6788012	KING SIZE	78 x 80 x 12	6 GU VINYL	6 EA.	\$24.25 EA.
MZ6728412	CAL-KING SIZE	72 x 84 x 12	6 GU VINYL	6 EA.	\$24.25 EA.
MZ6728012	HOTEL KING SIZE	72 x 80 x 12	6 GU VINYL	6 EA.	\$24.25 EA.



BED BUGS COVERS



ELITE ZIPPERED ENCASEMENT

Description:

- Waterproof.
- 100% Stretch Polyester knit laminated to 1 mil urethane barrier.
- Zippered covers have self-locking, rust-proof polyester zippers.
- Independently tested and certified to be bedbug proof.
- Test results available upon request.



STRETCHED KNIT POLYESTER LAMINATED TO URETHANE BARRIER

ELITE COMFORT ZIPPERED PILLOW ENCASEMENT

CERTIFIED BED BUG PROOF • FLAME RETARDANT • ANTIMICROBIAL • WATERPROOF

CAT NO.	DESCRIPTION	SIZE	MATERIAL	CASE PACK	PRICE.
PZK2127	STANDARD SIZE	21 x 27	STRETCH KNIT	12 EA.	\$5.00 EA.
PZK2131	QUEEN SIZE	21 x 31	STRETCH KNIT	12 EA.	\$5.65 EA.
PZK2137	KING SIZE	21 x 37	STRETCH KNIT	12 EA.	\$6.55 EA.

ELITE COMFORT ZIPPERED MATTRESS ENCASEMENT 9" DEEP

CERTIFIED BED BUG PROOF • FLAME RETARDANT • ANTIMICROBIAL • WATERPROOF

CAT NO.	DESCRIPTION	SIZE	MATERIAL	CASE PACK	PRICE.
MZK39759	TWIN SIZE	39 x 75 x 9	STRETCH KNIT	6 EA.	\$30.70 EA.
MZK39809	TWIN SIZE XL	39 x 80 x 9	STRETCH KNIT	6 EA.	\$33.80 EA.
MZK54759	FULL SIZE	54 x 75 x 9	STRETCH KNIT	6 EA.	\$36.85 EA.
MZK54809	FULL SIZE XL	54 x 80 x 9	STRETCH KNIT	6 EA.	\$39.95 EA.
MZK60809	QUEEN SIZE	60 x 80 x 9	STRETCH KNIT	6 EA.	\$43.00 EA.
MZK78809	KING SIZE	78 x 80 x 9	STRETCH KNIT	6 EA.	\$50.70 EA.
MZK72809	HOTEL KING SIZE	72 x 80 x 9	STRETCH KNIT	6 EA.	\$50.70 EA.
MZK72849	CAL-KING SIZE	72 x 84 x 9	STRETCH KNIT	6 EA.	\$50.70 EA.
MZK36809	HOSP TWIN	36 x 80 x 9	STRETCH KNIT	6 EA.	\$30.70 EA.

ELITE COMFORT ZIPPERED MATTRESS ENCASEMENT 12" DEEP

CERTIFIED BED BUG PROOF • FLAME RETARDANT • ANTIMICROBIAL • WATERPROOF

CAT NO.	DESCRIPTION	SIZE	MATERIAL	CASE PACK	PRICE.
MZK397512	TWIN SIZE	39 x 75 x 12	STRETCH KNIT	6 EA.	\$33.80 EA.
MZK398012	TWIN SIZE XL	39 x 80 x 12	STRETCH KNIT	6 EA.	\$36.85 EA.
MZK547512	FULL SIZE	54 x 75 x 12	STRETCH KNIT	6 EA.	\$39.95 EA.
MZK548012	FULL SIZE XL	54 x 80 x 12	STRETCH KNIT	6 EA.	\$43.00 EA.
MZK608012	QUEEN SIZE	60 x 80 x 12	STRETCH KNIT	6 EA.	\$47.65 EA.
MZK788012	KING SIZE	78 x 80 x 12	STRETCH KNIT	6 EA.	\$56.85 EA.
MZK728412	CAL-KING SIZE	72 x 84 x 12	STRETCH KNIT	6 EA.	\$56.85 EA.
MZK728012	HOTEL KING SIZE	72 x 80 x 12	STRETCH KNIT	6 EA.	\$56.85 EA.



BAR MOPS/KITCHEN TOWELS



WHITE TOWELS WITH COLORED CENTER STRIPE

CAT NO.	DESCRIPTION	WEIGHT	CASE PACK	PRICE DOZ.
306095	16 X 27 GREEN STRIPE	2.75 LB	20 DZ.	\$8.15 DZ.
306096	16 X 27 BLUE STRIPE	2.75 LB	20 DZ.	\$8.15 DZ.
306097	16 X 27 GOLD STRIPE	2.75 LB	20 DZ.	\$8.15 DZ.
301056	20 X 40 GREEN STRIPE	4.50 LB	10 DZ.	\$13.45 DZ.
306018	20 X 40 BLUE STRIPE	4.50 LB	10 DZ.	\$13.45 DZ.
301048	22 X 44 GREEN STRIPE	6.00 LB	10 DZ.	\$17.80 DZ.
301049	22 X 44 BLUE STRIPE	6.00 LB	10 DZ.	\$17.80 DZ.
306185	22 X 44 GOLD STRIPE	6.00 LB	10 DZ.	\$17.80 DZ.
301050	24 X 48 BLUE STRIPE	7.50 LB	5 DZ.	\$22.30 DZ.
306059	24 X 48 GREEN STRIPE	7.50 LB	5 DZ.	\$22.30 DZ.
306529	24 X 48 GOLD STRIPE	7.50 LB	5 DZ.	\$22.30 DZ.
301267	22 X 48 BLUE STRIPE	8.00 LB	5 DZ.	\$22.30 DZ.

100% COTTON
10 SINGLES



100% COTTON BAR MOPS

CAT NO.	DESCRIPTION	COLOR	WEIGHT	CASE PACK	PRICE DOZ.
406020	15 X 18 RIBBED	WHITE	19 OZ.	50 DZ.	\$3.35 DZ.
401051	15 X 18 TERRY	WHITE	20 OZ.	50 DZ.	\$3.35 DZ.
406021	17 X 20 RIBBED	WHITE	24 OZ.	50 DZ.	\$4.30 DZ.
406022	17 X 20 TERRY	WHITE	24 OZ.	50 DZ.	\$4.30 DZ.
406023	17 X 20 RIBBED	WHITE	28 OZ.	50 DZ.	\$5.00 DZ.
406024	17 X 20 TERRY	WHITE	28 OZ.	50 DZ.	\$5.00 DZ.
406025	17 X 20 RIBBED	WHITE	30 OZ.	50 DZ.	\$5.25 DZ.
406026	17 X 20 TERRY	WHITE	30 OZ.	50 DZ.	\$5.25 DZ.
406019	17 X 20 RIBBED	WHITE	32 OZ.	50 DZ.	\$5.60 DZ.
406027	17 X 20 TERRY	WHITE	32 OZ.	50 DZ.	\$5.60 DZ.
406028	17 X 20 TERRY	WHITE / BLUE STRIPE	30 OZ.	50 DZ.	\$5.55 DZ.
406017	17 X 20 TERRY	WHITE / GREEN STRIPE	30 OZ.	50 DZ.	\$5.55 DZ.
406029	17 X 20 SUPER TERRY	WHITE / ORANGE STRIPE	30 OZ.	50 DZ.	\$5.55 DZ.
406113	17 X 20 SUPER RIBBED	WHITE / 2 BLUE STRIPES	32 OZ.	50 DZ.	\$5.95 DZ.



100% COTTON HERRINGBONE KITCHEN TOWELS

CAT NO.	DESCRIPTION	COLOR	WEIGHT	CASE PACK	PRICE DOZ.
506107	15 X 26	WHITE / BLUE STRIPE	20 OZ.	50 DZ.	\$4.70 DZ.
506108	15 X 26	WHITE / GREEN STRIPE	20 OZ.	50 DZ.	\$4.70 DZ.
506109	15 X 26	WHITE / BLUE STRIPE	24 OZ.	50 DZ.	\$5.40 DZ.
506110	15 X 26	WHITE / GREEN STRIPE	24 OZ.	50 DZ.	\$5.40 DZ.



100% COTTON HUCK TOWELS & GLASS TOWELS

CAT NO.	DESCRIPTION	COLOR	WEIGHT	CASE PACK	PRICE DOZ.
606785	16 X 27	WHITE / RED STRIPE	24 OZ.	50 DZ.	\$7.15 DZ.



COLOR TOWELS

COLORED TOWELS AND WASH CLOTHS

100% COTTON DYED
16S RING SPUN DOBBY BORDER

Due to popular demand colors are subject to availability. Please call to verify.



CAT NO.	DESCRIPTION	COLOR	WEIGHT	CASE PACK	PRICE DOZ.
206150-ECR	12 X 12 WASH CLOTH	ECRU	1.00 LB	25 DZ.	\$6.60 DZ.
206150-FRS	12 X 12 WASH CLOTH	FRENCH ROSE	1.00 LB	25 DZ.	\$6.60 DZ.
206150-BMS	12 X 12 WASH CLOTH	BLUE MIST	1.00 LB	25 DZ.	\$6.60 DZ.
206150-NBL	12 X 12 WASH CLOTH	NAVY BLUE	1.00 LB	25 DZ.	\$6.60 DZ.
206150-HGR	12 X 12 WASH CLOTH	HUNTER GREEN	1.00 LB	25 DZ.	\$6.60 DZ.
206150-BUR	12 X 12 WASH CLOTH	BURGUNDY	1.00 LB	25 DZ.	\$6.60 DZ.
206151-ECR	16 X 27 HAND TOWEL	ECRU	3.00 LB	10 DZ.	\$19.25 DZ.
206151-FRS	16 X 27 HAND TOWEL	FRENCH ROSE	3.00 LB	10 DZ.	\$19.25 DZ.
206151-BMS	16 X 27 HAND TOWEL	BLUE MIST	3.00 LB	10 DZ.	\$19.25 DZ.
206151-NBL	16 X 27 HAND TOWEL	NAVY BLUE	3.00 LB	10 DZ.	\$19.25 DZ.
206151-HGR	16 X 27 HAND TOWEL	HUNTER GREEN	3.00 LB	10 DZ.	\$19.25 DZ.
206151-BUR	16 X 27 HAND TOWEL	BURGUNDY	3.00 LB	10 DZ.	\$19.25 DZ.
206151-DGR	16 X 27 HAND TOWEL	DARK GRAY	3.00 LB	10 DZ.	\$19.25 DZ.
206151-BRN	16 X 27 HAND TOWEL	BROWN	3.00 LB	10 DZ.	\$19.25 DZ.
206151-BLK	16 X 27 HAND TOWEL	BLACK	3.00 LB	10 DZ.	\$19.25 DZ.
206152-ECR	20 X 40 BATH TOWEL	ECRU	5.50 LB	10 DZ.	\$35.50 DZ.
206152-FRS	20 X 40 BATH TOWEL	FRENCH ROSE	5.50 LB	10 DZ.	\$35.50 DZ.
206152-BMS	20 X 40 BATH TOWEL	BLUE MIST	5.50 LB	10 DZ.	\$35.50 DZ.
206152-NBL	20 X 40 BATH TOWEL	NAVY BLUE	5.50 LB	10 DZ.	\$35.50 DZ.
206152-HGR	20 X 40 BATH TOWEL	HUNTER GREEN	5.50 LB	10 DZ.	\$35.50 DZ.
206153-ECR	24 X 48 BATH TOWEL	ECRU	8.00 LB	10 DZ.	\$51.30 DZ.
206153-FRS	24 X 48 BATH TOWEL	FRENCH ROSE	8.00 LB	10 DZ.	\$51.30 DZ.
206153-BMS	24 X 48 BATH TOWEL	BLUE MIST	8.00 LB	10 DZ.	\$51.30 DZ.
206153-NBL	24 X 48 BATH TOWEL	NAVY BLUE	8.00 LB	10 DZ.	\$51.30 DZ.
206153-HGR	24 X 48 BATH TOWEL	HUNTER GREEN	8.00 LB	10 DZ.	\$51.30 DZ.
206154-ECR	24 X 50 BATH TOWEL	ECRU	10.50 LB	5 DZ.	\$67.40 DZ.
206154-FRS	24 X 50 BATH TOWEL	FRENCH ROSE	10.50 LB	5 DZ.	\$67.40 DZ.
206154-BMS	24 X 50 BATH TOWEL	BLUE MIST	10.50 LB	5 DZ.	\$67.40 DZ.
206154-NBL	24 X 50 BATH TOWEL	NAVY BLUE	10.50 LB	5 DZ.	\$67.40 DZ.
206154-HGR	24 X 50 BATH TOWEL	HUNTER GREEN	10.50 LB	5 DZ.	\$67.40 DZ.
206155-NBL	27 X 54 BATH TOWEL	NAVY BLUE	13.50 LB	3 DZ.	\$86.55 DZ.
206155-HGR	27 X 54 BATH TOWEL	HUNTER GREEN	13.50 LB	3 DZ.	\$86.55 DZ.



EXTRA DUTY HAMPER TRUCKS



EXTRA DUTY HAMPER BASKET TRUCK

With Sewn on Liner

Features:

- Comes complete with liner sewn on.
- For handling heavy and bulky loads in Hospitals.
- Available in either heavy duty #6 cotton duck or 18oz. Reinforced vinyl.
- Large selection of sizes - 6 to 24 bushels. See Chart.
- Standard vinyl liners colors: Grey or Yellow. Call for other colors.
- Cotton duck liners are available in natural color only.
- Rubber casters - please specify arrangement when ordering.

BUSHEL SIZE	COTTON DUCK CAT. NO.	REINFORCED VINYL CAT. NO.	DIMENSIONS (L X W X H) IN	CASTER DIAMETER	WEIGHT LBS.	PRICE EACH
6	HB6CDR	HB6RVR	30 X 20 X 20.5	2.5"	30	\$167.00
8	HB8CDR	HB8RVR	34 X 22 X 23	2.5"	31	\$186.00
10	HB10CDR	HB10RVR	36 X 24 X 25	2.5"	36	\$200.00
12	HB12CDR	HB12RVR	36 X 26 X 27.5	3"	44	\$216.00
14	HB14CDR	HB14RVR	40 X 28 X 27.5	3"	54	\$246.00
16	HB16CDR	HB16RVR	40 X 28 X 30	3"	56	\$252.00
18	HB18CDR	HB18RVR	42 X 30 X 30	3"	58	\$273.00
20	HB20CDR	HB20RVR	48 X 32 X 30	3"	62	\$288.00
24	HB24CDR	HB24RVR	54 X 34 X 30	4"	78	\$363.00

CASTER STYLE OPTIONS

STYLE NO. 4071 (Diamond Pattern)
 2 Swivel Casters (1 in front, 1 in back)
 2 Stationary Casters (both in middle)

STYLE NO. 4072
 4 Swivel Casters (1 at each corner)

STYLE NO. 4074 (Diamond Pattern)
 4 Stationary Casters
 (1 in front, 2 in the middle, 1 in back)

STYLE NO. 4076
 2 Swivel Casters (both in front)
 2 Stationary Casters (both in back)

EXTRA DUTY INDUSTRIAL HAMPER BASKET TRUCK

With Removable Liner

Features: Same as above except liners are laced on.

BUSHEL SIZE	COTTON DUCK CAT. NO.	REINFORCED VINYL CAT. NO.	DIMENSIONS (L X W X H) IN	CASTER DIAMETER	WEIGHT LBS.	PRICE EACH
6	HR6CDR	HR6RVR	30 X 20 X 20.5	2.5"	30	\$171.00
8	HR8CDR	HR8RVR	34 X 22 X 23	2.5"	31	\$175.00
10	HR10CDR	HR10RVR	36 X 24 X 25	2.5"	36	\$185.00
12	HR12CDR	HR12RVR	36 X 26 X 27.5	3"	44	\$202.00
14	HR14CDR	HR14RVR	40 X 28 X 27.5	3"	54	\$225.00
16	HR16CDR	HR16RVR	40 X 28 X 30	3"	56	\$230.00
18	HR18CDR	HR18RVR	42 X 30 X 30	3"	58	\$239.00
20	HR20CDR	HR20RVR	48 X 32 X 30	3"	62	\$252.00



ELEVATED SPRING PLATFORM

For Canvas Vinyl Trucks

Features:

- Self leveling action eliminates worker fatigue from stooping and bending.
- Automatically lowers contents while loading and raises load when removing.
- Reinforced steel frame with 18oz. reinforced gray vinyl.

FOR CANVAS & VINYL CAT. NO.	TO FIT BUSHEL CAPACITY	NO. OF SPRINGS	PRICE EACH
125SP6-RG	6	4	\$62.00
125SP8-RG	8	4	\$64.00
125SP10-RG	10	4	\$65.00
125SP12-RG	12	4	\$66.00
125SP14-RG	14	6	\$96.00
125SP16-RG	16	6	\$97.00
125SP18-RG	18	6	\$98.00
125SP20-RG	20	6	\$100.00





HAMPER LINERS & CAPS

Insert Liner:

- A protective barrier to prolong life of truck
- Removes effortlessly for easy cleaning
- Four materials to choose from
- Optional flaps keep contents covered
- Sizes: 4 to 24 bushel

Hamper Basket Cap:

- Keeps content covered.
- Elastic in hem for sure, snug fit.



200 DENIER NYLON HAMPER BASKET LINER

CATALOG NUMBER	BUSHEL SIZE	DIMENSIONS W x L x H	PRICE EACH	
			WHITE	COLOR
HBL4NL20	4	18" x 26" x 18"	\$20.00	\$21.00
HBL6NL20	6	20" x 30" x 21"	\$21.00	\$24.00
HBL8NL20	8	22" x 34" x 23"	\$22.00	\$26.00
HBL10NL20	10	24" x 36" x 25"	\$24.00	\$29.00
HBL12NL20	12	26" x 36" x 28"	\$25.00	\$30.00
HBL14NL20	14	28" x 40" x 28"	\$26.00	\$31.00
HBL16NL20	16	28" x 40" x 30"	\$29.00	\$33.00
HBL18NL20	18	30" x 42" x 30"	\$30.00	\$34.00
HBL20NL20	20	32" x 48" x 30"	\$32.00	\$38.00
HBL24NL20	24	34" x 54" x 30"	\$36.00	\$44.00

400 DENIER NYLON HAMPER BASKET LINER

CATALOG NUMBER	BUSHEL SIZE	DIMENSIONS W x L x H	PRICE EACH	
			WHITE	COLOR
HBL4NL40	4	18" x 26" x 18"	\$25.00	\$30.00
HBL6NL40	6	20" x 30" x 21"	\$28.00	\$32.00
HBL8NL40	8	22" x 34" x 23"	\$30.00	\$36.00
HBL10NL40	10	24" x 36" x 25"	\$32.00	\$38.00
HBL12NL40	12	26" x 36" x 28"	\$33.00	\$40.00
HBL14NL40	14	28" x 40" x 28"	\$36.00	\$43.00
HBL16NL40	16	28" x 40" x 30"	\$38.00	\$46.00
HBL18NL40	18	30" x 42" x 30"	\$41.00	\$51.00
HBL20NL40	20	32" x 48" x 30"	\$47.00	\$53.00
HBL24NL40	24	34" x 54" x 30"	\$48.00	\$59.00

REINFORCED VINYL HAMPER BASKET LINER

CATALOG NUMBER	BUSHEL SIZE	DIMENSIONS W x L x H	PRICE EACH	
			WHITE	COLOR
HBL4RV	4	18" x 26" x 18"	\$28.00	\$21.00
HBL6RV	6	20" x 30" x 21"	\$30.00	\$34.00
HBL8RV	8	22" x 34" x 23"	\$32.00	\$39.00
HBL10RV	10	24" x 36" x 25"	\$34.00	\$41.00
HBL12RV	12	26" x 36" x 28"	\$37.00	\$44.00
HBL14RV	14	28" x 40" x 28"	\$39.00	\$46.00
HBL16RV	16	28" x 40" x 30"	\$41.00	\$49.00
HBL18RV	18	30" x 42" x 30"	\$45.00	\$53.00
HBL20RV	20	32" x 48" x 30"	\$48.00	\$57.00
HBL24RV	24	34" x 54" x 30"	\$53.00	\$63.00

ORIGINAL REPLACEMENT LINERS

BUSHEL SIZE	COTTON DUCK CAT. NO.	REINFORCE VINYL CAT. NO.	WEIGHT LBS	DIMENSIONS W x L x H	PRICE EACH
6	ORL6CD	ORL6RV	4 1/2	30" x 20" x 20.5"	\$61.00
8	ORL8CD	ORL8RV	5	34" x 22" x 23"	\$68.00
10	ORL10CD	ORL10RV	5 1/2	36" x 24" x 25"	\$76.00
12	ORL12CD	ORL12RV	6	36" x 26" x 27.5"	\$81.00
14	ORL14CD	ORL14RV	6 1/2	40" x 28" x 27.5"	\$88.00
16	ORL16CD	ORL16RV	7	40" x 28" x 30"	\$92.00
18	ORL18CD	ORL18RV	7 1/2	42" x 30" x 30"	\$100.00
20	ORL20CD	ORL20RV	8	48" x 32" x 30"	\$110.00

COLORS AVAILABLE FOR BOTH HAMPER BASKET LINERS & CAPS:

200 Denier Nylon:
White, Blue, Green, Red and Yellow.

400 Denier Nylon:
White, Blue, Green, Red and Yellow.

1000 Denier Nylon:
Navy, Green and White.

10 oz. Vinyl:
Red, Royal, Green, Yellow, White, Tan, Grey and Mauve.

200 DENIER NYLON HAMPER BASKET CAPS

CATALOG NUMBER	BUSHEL SIZE	DIMENSIONS W x L x H	PRICE EACH	
			WHITE	COLOR
HBC4NL20	4	18" x 26" x 8"	\$15.00	\$17.00
HBC6NL20	6	20" x 30" x 8"	\$16.00	\$18.00
HBC8NL20	8	22" x 34" x 8"	\$17.00	\$20.00
HBC10NL20	10	24" x 36" x 8"	\$18.00	\$22.00
HBC12NL20	12	26" x 36" x 8"	\$20.00	\$23.00
HBC14NL20	14	28" x 40" x 8"	\$21.00	\$24.00
HBC16NL20	16	28" x 40" x 8"	\$22.00	\$25.00
HBC18NL20	18	30" x 42" x 8"	\$23.00	\$26.00
HBC20NL20	20	32" x 48" x 8"	\$24.00	\$29.00
HBC24NL20	24	34" x 54" x 8"	\$26.00	\$31.00

400 DENIER NYLON HAMPER BASKET CAPS

CATALOG NUMBER	BUSHEL SIZE	DIMENSIONS W x L x H	PRICE EACH	
			WHITE	COLOR
HBC4NL40	4	18" x 26" x 8"	\$20.00	\$23.00
HBC6NL40	6	20" x 30" x 8"	\$21.00	\$24.00
HBC8NL40	8	22" x 34" x 8"	\$22.00	\$25.00
HBC10NL40	10	24" x 36" x 8"	\$23.00	\$28.00
HBC12NL40	12	26" x 36" x 8"	\$24.00	\$29.00
HBC14NL40	14	28" x 40" x 8"	\$25.00	\$30.00
HBC16NL40	16	28" x 40" x 8"	\$28.00	\$32.00
HBC18NL40	18	30" x 42" x 8"	\$29.00	\$34.00
HBC20NL40	20	32" x 48" x 8"	\$31.00	\$37.00
HBC24NL40	24	34" x 54" x 8"	\$32.00	\$39.00

REINFORCED VINYL HAMPER BASKET CAPS

CATALOG NUMBER	BUSHEL SIZE	DIMENSIONS W x L x H	PRICE EACH	
			WHITE	COLOR
HBC4RV	4	18" x 26" x 8"	\$22.00	\$25.00
HBC6RV	6	20" x 30" x 8"	\$23.00	\$26.00
HBC8RV	8	22" x 34" x 8"	\$24.00	\$28.00
HBC10RV	10	24" x 36" x 8"	\$25.00	\$30.00
HBC12RV	12	26" x 36" x 8"	\$28.00	\$31.00
HBC14RV	14	28" x 40" x 8"	\$29.00	\$32.00
HBC16RV	16	28" x 40" x 8"	\$30.00	\$34.00
HBC18RV	18	30" x 42" x 8"	\$31.00	\$38.00
HBC20RV	20	32" x 48" x 8"	\$32.00	\$40.00
HBC24RV	24	34" x 54" x 8"	\$36.00	\$43.00

Features:

- For use on hamper baskets and trucks.
- Double stitched and extra reinforced.
- Double row of grommets for easy lacing to frame.
- Available in heavy duty #6 Natural Duck and 18oz. Reinforced Vinyl.



CUSTOM MADE LINERS & CAPS

HERE'S HOW TO ORDER

Outside Dimensions

Width (Front to Back) _____

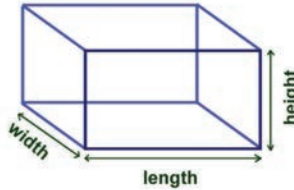
Outside Dimensions

Length (Left to Right) _____

Inside Dimensions

Height for liner _____

- When measuring height for liners, measure the inside dimension only.
- Maybeck will add 7" to the height to create the over-lapping effect.
- When ordering a cap the height will finish standard 12" high



Tilt-Truck Cap



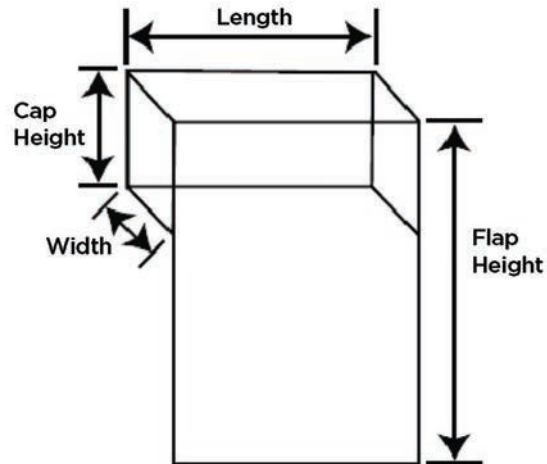
Hamper Basket Liner



Hamper Basket Cap

CUSTOM SANITARY LINER			
SIZES UP TO	200D NYLON	400D NYLON	10 OZ VINYL
36 x 62 x 36	\$68.00	\$88.00 Ea.	\$97.00 Ea.
36 x 75 x 36	\$82.00	\$106.00 Ea.	\$116.00 Ea.
42 x 86 x 32	\$110.00	\$142.00 Ea.	\$155.00 Ea.

CUSTOM SANITARY CAPS			
SIZES UP TO	200D NYLON	400D NYLON	10 OZ VINYL
28 x 60 x 12	\$49.00	\$61.00 Ea.	\$66.00 Ea.
36 x 73 x 12	\$76.00	\$100.00 Ea.	\$108.00 Ea.
42 x 86 x 12	\$104.00	\$136.00 Ea.	\$147.00 Ea.



Poly Bulk Delivery Truck Cap with Flap

CAT. NO.	DESCRIPTION	MATERIAL	SIZE UP TO	PRICE EACH
PBDNL20	Liner	200D	42 x 72 x 84	\$91.00
PBDNL40	Liner	400D	42 x 72 x 84	\$113.00
PBDRV10	Liner	10oz Vinyl	42 x 72 x 84	\$130.00
PBDST10	Liner	Anti-Static	42 x 72 x 84	\$137.00



HAMPER TRUCKS

Features:

- 1/2" thick plywood cover, complete with lock rod (as shown) as standard fastener.
- Optimum container for valuable merchandise, soft goods, parts, boxed items.
- Spring steel construction.
- Available in heavy duty #6 natural Duck and 18 oz. Reinforced Vinyl.
- Large selection of sizes 6 to 20 bushels. See chart.



EXTRA DUTY WOOD COVERED HAMPERS

BUSHEL SIZE	COTTON DUCK CAT. NO.	REINFORCED VINYL CAT. NO.	WEIGHT LBS.	OVER ALL SIZE L X W X H	PRICE
6	40W6CD	40W6RV	34	30 X 20 X 20.5	\$261.00
8	40W8CD	40W8RV	36	34 X 22 X 23	\$291.00
10	40W10CD	40W10RV	40	36 X 24 X 25	\$322.00
12	40W12CD	40W12RV	43	36 X 26 X 27.5	\$344.00
14	40W14CD	40W14RV	50	40 X 28 X 27.5	\$374.00
16	40W16CD	40W16RV	55	40 X 28 X 30	\$380.00
18	40W18CD	40W18RV	64	42 X 30 X 30	\$399.00
20	440W20CD	440W20RV	78	48 X 32 X 30	\$424.00

Please specify Caster Style when ordering.

STYLE NO. 4072

4 Swivel Casters (1 at each corner)

STYLE NO. 4076

2 Swivel Casters (both in front)
2 Stationary Casters (both in back)

TILT TRUCKS WITH OPTIONAL SPLIT LID

Features:

- Wall thickness of .225
- Available with optional split lid
- Available in 2 sizes
- Price for color black only



CAT NO.	DESCRIPTION	CUBIC YARD	OVERALL SIZE (L X W X H)	LOAD CAP.	PRICE EACH
8102	TRUCK ONLY	1/2	26" x 54" x 38"	750	\$499.00
8102HL	HINGED LID	1/2	N/A	N/A	\$185.00
8103	TRUCK ONLY	1.0	33" x 70" x 44"	1000	\$556.00
8103HL	HINGED LID	1.0	N/A	N/A	\$213.00



Features:

- Rustproof frame.
- Rubber caster.
- Available in Cotton Duck and Reinforced Vinyl.

ELEVATED TRUCKS

BUSHEL SIZE	COTTON DUCK CAT. NO.	REINFORCED VINYL CAT. NO.	OVERALL HEIGHT	DIMENSIONS L X W X H	WEIGHT LBS.	CASTER DIAM.	PRICE EACH
3	152CD3	152RV3	27"	24 X 18 X 16	19	2.5	\$107.00
4	152CD4	152RV4	30"	30 X 18 X 16	20	2.5	\$121.00
6	152CD6	152RV6	30"	30 X 20 X 20.5	31	2.5	\$140.00





.190 THICK

POLY TRUCKS

Features:

- Seamless, smooth surfaced rotationally molded surface that can be sanitized with hot water & detergents.
- Made of tough durable, .190 thick polyethylene.
- Optional drain hose.
- Large selection of sizes.
- The 5/8" plywood base and casters are attached directly to the polyethylene body to form a sturdy one-piece unit.
- Color coding available. Colors: Red, Yellow, Green, Blue, Grey and White. Please specify.

STANDARD WEIGHT POLY TRUCKS

BUSHEL SIZE	CAT. NO.	DIMENSIONS L X W X H	CASTER DIAMETER	WEIGHT LBS.	PRICE EACH
6	401P6	30 X 20 X 20.5	2.5	34	\$296.00
8	401P8	30 X 22 X 23	2.5	40	\$318.00
10	401P10	36 X 24 X 25	2.5	44	\$336.00
12	401P12	36 X 26 X 27.5	3	52	\$356.00
14	401P14	40 X 28 X 27.5	3	55	\$394.00
16	401P16	40 X 28 X 30	3	58	\$402.00
18	401P18	42 X 30 X 30	3	64	\$421.00
20	401P20	44 X 32 X 33	3	70	\$482.00

Please Specify Color and Caster Style when ordering.

STYLE NO. 4072
4 Rubber Swivel Casters

STYLE NO. 4076
2 Rubber Swivel,
2 Rigid Casters



.100 THICK

Features:

- Complete with removable. 100 thick polyethylene liner.
- 100% rustproof frame with rigid and/or swivel rubber casters.
- Large selection of sizes, 6 to 20 bushels.
- The durable waterproof poly liner has a seamless, smooth surface that can be sanitized with hot water and detergents.
- Color White Only.

SERVICE WEIGHT POLY TRUCKS

BUSHEL SIZE	CAT. NO.	DIMENSIONS L X W X H	CASTER DIAMETER	WEIGHT LBS.	PRICE EACH
6	402H6	30 X 20 X 20.5	2.5	34	\$213.00
8	402H8	30 X 22 X 23	2.5	36	\$238.00
10	402H10	36 X 24 X 25	2.5	38	\$258.00
12	402H12	36 X 26 X 27.5	3	40	\$276.00
14	402H14	40 X 28 X 27.5	3	48	\$307.00
16	402H16	40 X 28 X 30	3	58	\$321.00
18	402H18	42 X 30 X 30	3	62	\$348.00
20	402H20	44 X 32 X 33	3	68	\$389.00

ELEVATED SPRING PLATFORM For Poly Trucks

FOR POLY TRUCK CAT. NO.	TO FIT BUSHEL CAPACITY	NO. OF SPRINGS	PRICE EACH
125SP6-PL	6	4	\$59.00
125SP8-PL	8	4	\$61.00
125SP10-PL	10	4	\$62.00
125SP12-PL	12	4	\$63.00
125SP14-PL	14	6	\$92.00
125SP16-PL	16	6	\$94.00
125SP18-PL	18	6	\$95.00
125SP20-PL	20	6	\$96.00



Features:

- Self leveling action eliminates worker fatigue from stooping and bending.
- Automatically lowers contents while loading and raises load when removing.
- Reinforced steel frame with 18oz. reinforced gray vinyl.



LAUNDRY CARTS



Available with or without Hanging Pole



Features:

- 4 1/2 Bushel Capacity.
- Comes standard with chrome basket and base.
- This unit is equipped with 5" Clean Wheel System - the only caster that prevents lint and thread pick up.
- Overall Height without hanging pole: 32"
- Overall Height with hanging pole: 75 1/2"

CAT NO.	DIMENSIONS	DESCRIPTION	PRICE EACH
LC311	20" X 33" X 16"	WITHOUT POLE	\$213.00
LC311HP	20" X 33" X 16"	WITH POLE	\$266.00

KNOCKED DOWN HAMPER BASKET TRUCK

UPS/FEDEX-ABLE TRUCK

Features:

Vinyl sided bushel trucks available in 6-20 bushel sizes. Designed sturdiness and durability of sewn-in liners with the benefits of a knocked-down unit providing great freight savings. Steel bases for durability. Replaceable vinyl/nylon

flame retardant liner with a heavy-duty black rim for additional rim protection. 3" polyurethane casters. Optional spring platforms and hinged poly lids. Colors Available: yellow, dark blue and grey.

Please specify Caster Style when ordering.

STYLE NO. 4072

4 Swivel Casters (1 at each corner)

STYLE NO. 4076

2 Swivel Casters (both in front)
2 Stationary Casters (both in back)



FULLY ASSEMBLED



KNOCKED DOWN



SPRING PLATFORM

TRUCKS ONLY			
CAT. NO.	OVER ALL SIZE L X W X H	BU	PRICE EACH
HK6RVR	32" X 22" X 26"	6	\$246.00
HK8RVR	35" X 24" X 30"	8	\$262.00
HK10RVR	37" X 25" X 32"	10	\$282.00
HK12RVR	38" X 28" X 35"	12	\$297.00
HK14RVR	42" X 30" X 37"	14	\$323.00
HK16RVR	41" X 30" X 39"	16	\$329.00
HK18RVR	44" X 32" X 39"	18	\$356.00
HK20RVR	49" X 34" X 40"	20	\$373.00

SPRING PLATFORM		
CAT. NO.	BU	PRICE
125SP6-KD	6	\$69.00
125SP8-KD	8	\$73.00
125SP10-KD	10	\$77.00
125SP12-KD	12	\$80.00
125SP14-KD	14	\$93.00
125SP16-KD	16	\$94.00
125SP18-KD	18	\$106.00
125SP20-KD	20	\$113.00



CUSTOM CART COVERS



ZIPPER CLOSURE



VELCRO CLOSURE



CLEAR VINYL

Standard Features:

- Custom sized to order
- No minimum order for standard covers
- Choices of 6 Fabrics
- Front flap opening (length side)
- Zipper or Velcro Closure
- Double needle construction
- Reinforced corners

Standard Colors:

- 200 Denier Nylon – Red, Blue, Burgundy, Orange, Green, Yellow, Pink and White
- 400 Denier Nylon – Red, Blue, Burgundy, Black, Brown, Green, Navy and White
- 600 Denier Nylon – Navy, Green, and White
- 10 oz. Reinforced Vinyl – Red, Blue, Green, Yellow and White, Tan, Grey, Mauve and Black
- Staph - Chek – Red, Blue, Green, Yellow, Tan, Grey, Mauve, Frosty, Black and White

CUSTOM CART COVER PRICING GUIDE

**ALL CART COVERS ARE CUSTOM MADE TO YOUR SIZE SPECIFICATION
PLEASE REFER TO "HOW TO ORDER" FOR INSTRUCTIONS ON HOW TO MEASURE**

SIZES W x L x H	200 D NYLON	400 D NYLON	600 D NYLON	10 OZ VINYL REINFORCED	#20 STAPH-CHEK	16 GAUGE CLEAR VINYL
Up to 16" x 28" x 30"	\$63.00 Ea.	\$78.00 Ea.	\$94.00 Ea.	\$90.00 Ea.	\$97.00 Ea.	\$105.00 Ea.
Up to 18" x 48" x 54"	\$66.00 Ea.	\$79.00 Ea.	\$123.00 Ea.	\$96.00 Ea.	\$101.00 Ea.	\$107.00 Ea.
Up to 18" x 48" x 62"	\$69.00 Ea.	\$84.00 Ea.	\$130.00 Ea.	\$97.00 Ea.	\$109.00 Ea.	\$113.00 Ea.
Up to 18" x 48" x 72"	\$77.00 Ea.	\$91.00 Ea.	\$143.00 Ea.	\$105.00 Ea.	\$117.00 Ea.	\$121.00 Ea.
Up to 24" x 48" x 54"	\$69.00 Ea.	\$84.00 Ea.	\$130.00 Ea.	\$97.00 Ea.	\$109.00 Ea.	\$113.00 Ea.
Up to 24" x 48" x 62"	\$73.00 Ea.	\$90.00 Ea.	\$140.00 Ea.	\$103.00 Ea.	\$113.00 Ea.	\$118.00 Ea.
Up to 24" x 48" x 72"	\$82.00 Ea.	\$98.00 Ea.	\$152.00 Ea.	\$116.00 Ea.	\$126.00 Ea.	\$131.00 Ea.
Up to 24" x 60" x 54"	\$73.00 Ea.	\$89.00 Ea.	\$140.00 Ea.	\$103.00 Ea.	\$116.00 Ea.	\$120.00 Ea.
Up to 24" x 60" x 62"	\$81.00 Ea.	\$97.00 Ea.	\$151.00 Ea.	\$109.00 Ea.	\$124.00 Ea.	\$129.00 Ea.
Up to 24" x 60" x 72"	\$88.00 Ea.	\$106.00 Ea.	\$167.00 Ea.	\$121.00 Ea.	\$136.00 Ea.	\$141.00 Ea.
Up to 24" x 72" x 72"	\$104.00 Ea.	\$128.00 Ea.	\$200.00 Ea.	\$144.00 Ea.	\$163.00 Ea.	\$167.00 Ea.



CUSTOM CART COVERS

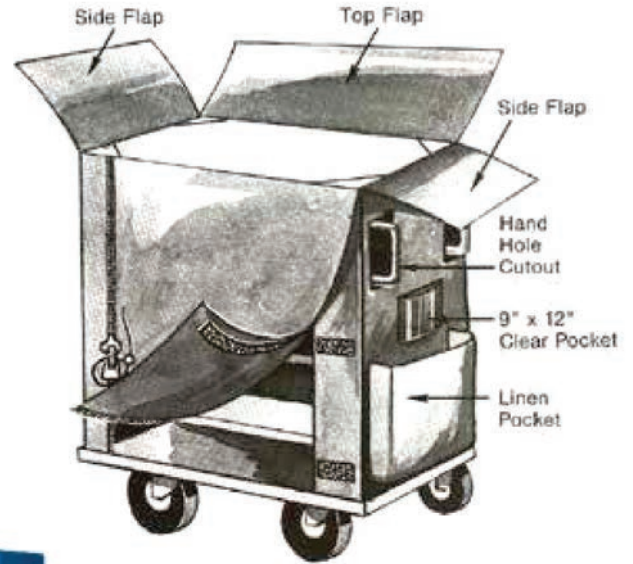


CLEAR VINYL FLAP



HANDLE CUTOUT

Custom Extras



9" X 12" CLEAR VINYL POCKET



CUSTOM COVER EXTRAS	
DESCRIPTION	PRICE
Hand Hole	\$9.50 Each
9" x 12" Clear Pocket	\$9.50 Each
Top Flap	Add \$30.00 to Cost
Side Flaps	Add \$30.00 to Cost
Clear Vinyl Front Flap	Add \$33.00 to Cost
Linen Pocket	\$19.00 Each
Tie Tapes	\$11.00 per set of 4 Each
Silk Screen	Call for Pricing

HERE'S HOW TO ORDER • HERE'S HOW TO ORDER • HERE'S HOW TO ORDER

Carefully follow the instructions below and use the prices as a guide.

Size:

Width (Front to Back) _____
 Length (Left to Right) _____
 Height (Top to Bottom) _____

Material:

- 200 Denier Nylon
- 400 Denier Nylon
- 600 Denier Nylon
- 10 oz. Reinforced Vinyl
- #20 Staph Chek
- 10 Gauge Clear Vinyl

Color: _____

Flap:

- LENGTH (STANDARD) NO CHARGE
- WIDTH (SPECIFY) NO CHARGE
- 2 SIDES ADD 25%
- NO FLAP (BOX COVER) SUBTRACT 25%

Flap Closure (included in price):

- Zippers, Type I
- Velcro, Type II

To price a special size cover not listed, use the next larger size.
 Example: 18" x 36" x 65" use the 18" x 48" x 72" prices.

No minimum orders!

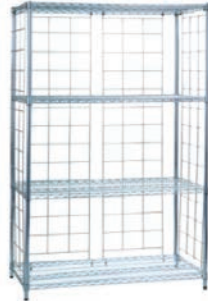
**Covers are all custom made and no returns are accepted.
 Please call for assistance if unsure.**



LINEN CARTS



4 SHELF MOBILE LINEN CART



OPTIONAL ENCLOSURE KIT

4 SHELF MOBILE LINEN CART			
CAT NO.	SIZE	FINISH	PRICE EA.
M-183663-CP	18" x 36" x 63"	Chrome	\$340.00
M-183673-CP	18" x 36" x 73"	Chrome	\$343.00
M-184863-CP	18" x 48" x 63"	Chrome	\$429.00
M-184873-CP	18" x 48" x 73"	Chrome	\$432.00
M-186063-CP	18" x 60" x 63"	Chrome	\$477.00
M-186073-CP	18" x 60" x 73"	Chrome	\$481.00
M-243663-CP	24" x 36" x 63"	Chrome	\$433.00
M-243673-CP	24" x 36" x 73"	Chrome	\$436.00
M-244863-CP	24" x 48" x 63"	Chrome	\$479.00
M-244873-CP	24" x 48" x 73"	Chrome	\$482.00
M-246063-CP	24" x 60" x 63"	Chrome	\$555.00
M-246073-CP	24" x 60" x 73"	Chrome	\$558.00

Features:

- All Steel HeavyDuty Construction
- Shelves Constructed Of Steel Wire
- Four Shelves On Each Cart
- Four 5" Rubber casters (2 Swivel, 2 Swivel Brake)
- Heights listed do not include casters

Optional Enclosure Kit Available. Sold Separately.

WIRE ENCLOSURE PANEL KIT		
CAT NO.	For Cart	Price Ea.
EPK-183673	18x36x73	\$260.00
EPK-184873	18x48x73	\$265.00
EPK-186073	18x60x73	\$337.00
EPK-243673	24x36x73	\$270.00
EPK-244873	24x48x73	\$274.00
EPK-246073	24x60x73	\$340.00

Adjustable Shelf Utility Cart

Chrome Plated 3 Wire or 2 Wire and Solid Bottom



3 WIRE SHELF CART



2 WIRE AND SOLID BOTTOM

3 WIRE SHELF UTILITY CART		
CAT NO.	SIZE	PRICE EA.
UC1836W	18" x 36" x 42"	\$311.00
UC1848W	18" x 36" x 42"	\$393.00
UC2436W	24" x 36" x 42"	\$397.00
UC2448W	24" x 48" x 42"	\$435.00

2 WIRE AND 1 SOLID BOTTOM CART		
CAT NO.	SIZE	PRICE EA.
UC1836S	18" x 36" x 42"	\$401.00
UC1848S	18" x 36" x 42"	\$517.00
UC2436S	24" x 36" x 42"	\$516.00
UC2448S	24" x 48" x 42"	\$565.00

Features:

- Super-strong cart stores and transports safely and efficiently
- Ideal for warehouse, lab, factory, hospital and more
- Shelves adjust on 1" increments
- Numbered posts allow quick positioning at desired height
- 5" polyurethane wheel swivel casters
- Overall height for all carts is 42"



BULK TRUCKS



FOLD-UP SECURITY TRUCK

Features:

- Help protect inventory from theft and damage with this completely enclosed truck.
- Open construction reduces dust accumulation and increases visibility.
- Fold to 6" for compact storage.
- Heavy gauge 1" x 2" wire mesh.
- 1" square tubing covered with 20 ga. sheet metal.
- Solid center shelf divides truck into two 34"H compartments and increases strength of unit.
- Two (2) rigid and two (2) swivel 6" x 2" molded on rubber wheel casters increase mobility.
- Size: 27" x 44.5" x 76" H
- 2000 lb. Capacity.
- Padlockable
- Gray epoxy finished.

CAT. NO.	CAPACITY	PRICE EACH
FST3111	2000 LB	\$1185.00

POLY BULK SECURITY TRUCK

Features:

- Heavy duty plastic construction.
- Transports soiled linen.
- Available in three sizes.
- Optional Plastic split lid for security.
- Available in 15 Colors.
- 6" Casters.
- Wide range of caster arrangements.

CAT. NO.	OVERALL SIZE L X W X H	COLOR CHOICE & DESCRIPTION	PRICE EACH
1108	28.5" X 48" X 54.5"	15 COLORS – NO DOORS	\$632.00
1110	28.5" X 48" X 54.5"	15 COLORS – WITH DOORS	\$1135.00
1112	28.5" X 48" X 66.5"	15 COLORS – NO DOORS	\$650.00
1114	28.5" X 48" X 66.5"	15 COLORS – WITH DOORS	\$1220.00
1116	28.5" X 41" X 59"	15 COLORS – NO DOORS	\$769.00



Please Specify Caster Style when ordering.

STYLE NO. 4072
4 Rubber Swivel Casters

STYLE NO. 4076
2 Rubber Swivel, 2 Rigid Casters



POLY ROUND TRIPPER TRUCK

Features:

- For transporting clean and soiled linen.
- Available in three sizes.
- Heavy duty plastic construction.
- Available in 15 Colors.
- Two wire shelves fold forward to convert to a soiled linen truck.
- Wide range of caster arrangements.

CAT. NO.	OVERALL SIZE L X W X H	COLOR CHOICE & DESCRIPTION	PRICE EACH
1130	28.5" X 48" X 62"	15 COLORS	\$1092.00
1134	27.5" X 59.5" X 64"	15 COLORS	\$1401.00



GARMENT RACKS



DOUBLE POLE GARMENT RACK

Features:

- Constructed with rugged 1" steel tubing.
- Complete with 5" casters.
- Available in 2 sizes.

CAT. NO.	OVERALL SIZE (W X L X H)	FINISH	PRICE EACH
1836	27" X 60" X 67.5"	200LB	\$327.00
1833	27" X 72" X 67"	200LB	\$398.00

Covers Sold Separately

SINGLE POLE GARMENT RACK

Features:

- Constructed with rugged 7/8" steel tubing.
- Complete with 5" casters.
- Available in 2 sizes.

CAT. NO.	OVERALL SIZE (W X L X H)	FINISH	PRICE EACH
1814	18" X 36" X 64"	65LB	\$150.00
1816	18" X 48" X 64"	75LB	\$157.00

Covers Sold Separately



STACK-RACK GARMENT RACK

Features:

- Constructed with rugged steel tubing.
- Complete with 4" casters.
- Nesting feature for easy storage.

CAT. NO.	OVERALL SIZE (W X L X H)	FINISH	PRICE EACH
1846	22" X 63" X 67"	150LB	\$235.00

Covers Sold Separately

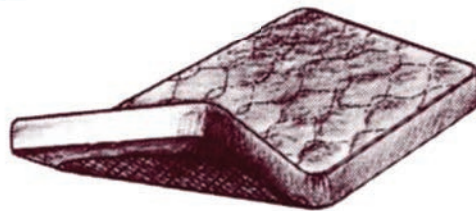


MATTRESS PADS

Flat Pad



Anchor Band



Fitted

Available in Three Styles

- Institutional Quality Mattress Pads add comfort and protection to all mattresses.
- All mattress pads are available in three styles: FLAT, ANCHOR BAND or FITTED
- All mattress pads are easy care machine wash and dry
- A wide choice of fabrics to meet all budgets, from our one piece construction polyester felt pad to our NEW!! Quilted WATERPROOF mattress pad.

DESCRIPTION	MATTRESS SIZE	CAT NO.	FLAT PAD	CAT NO.	ANCHOR BAND	CAT NO.	FITTED
100% POLYESTER FELT PADS • Seamless one Piece Construction for long lasting strength and durability • Adds loft and comfort to all beds • Won't tear or shred • Machine wash • Shrinkage controlled (Case Pack: 12)	SINGLE XL, 36 x 80	MP01	\$6.65 ea.	MP02	\$7.45 ea.	MP03	\$11.00 ea.
	TWIN, 39 x 75	MP04	\$6.70 ea.	MP05	\$7.55 ea.	MP06	\$11.65 ea.
	FULL, 54 x 75	MP07	\$8.20 ea.	MP08	\$9.55 ea.	MP09	\$13.80 ea.
	FULL XL, 54 x 80	MP10	\$8.60 ea.	MP11	\$9.80 ea.	MP12	\$14.50 ea.
	QUEEN, 60 x 80	MP13	\$8.90 ea.	MP14	\$10.70 ea.	MP15	\$15.50 ea.
	KING, 78 x 80	MP16	\$12.15 ea.	MP17	\$13.05 ea.	MP18	\$18.25 ea.
QUILTED - POLY TOP and BOTTOM • Quilted with lofty polyester fill • Sonically quilted, no threads to break • Machine wash and dry • Case Pack: 12 per size	SINGLE XL, 36 x 80	MP19	\$6.40 ea.	MP20	\$6.80 ea.	MP21	\$10.25 ea.
	TWIN, 39 x 75	MP22	\$6.45 ea.	MP23	\$6.95 ea.	MP24	\$10.40 ea.
	TWIN XL, 39 x 80	MP25	\$6.55 ea.	MP26	\$7.10 ea.	MP27	\$10.75 ea.
	FULL, 54 x 75	MP28	\$8.70 ea.	MP29	\$9.20 ea.	MP30	\$12.35 ea.
	QUEEN, 60 x 80	MP31	\$10.05 ea.	MP32	\$10.50 ea.	MP33	\$13.25 ea.
	KING, 78 x 80	MP34	\$11.20 ea.	MP35	\$11.70 ea.	MP36	\$15.40 ea.
COTTON / POLY Top, POLY Bottom • Quilted • 50/50 Cotton Poly top quilted to a 2.7oz Polyester fiberfill and 100% polyester bottom • Sonically quilted • Machine washable • Color: White • Pack: 12 per size	SINGLE XL, 36 x 80	MP37	\$8.45 ea.	MP38	\$8.70 ea.	MP39	\$12.05 ea.
	TWIN, 39 x 75	MP40	\$8.50 ea.	MP41	\$8.80 ea.	MP42	\$12.25 ea.
	TWIN XL, 39 x 80	MP43	\$8.60 ea.	MP44	\$8.90 ea.	MP45	\$12.55 ea.
	FULL, 54 x 75	MP46	\$11.05 ea.	MP47	\$11.45 ea.	MP48	\$14.10 ea.
	QUEEN, 60 x 80	MP49	\$13.15 ea.	MP50	\$13.40 ea.	MP51	\$15.95 ea.
	KING, 78 x 80	MP52	\$16.00 ea.	MP53	\$16.25 ea.	MP54	\$19.95 ea.
POLY / COTTON TOP and BOTTOM • 50% Cotton 50% polyester Top and Bottom Stitch Quilted to a lofty polyester fiberfill • Machine Washable • Color: White • Case pack: 12 per size	SINGLE XL, 36 x 80	MP55	\$9.65 ea.	MP56	\$9.95 ea.	MP57	\$12.70 ea.
	TWIN, 39 x 75	MP58	\$10.00 ea.	MP59	\$10.50 ea.	MP60	\$13.25 ea.
	TWIN XL, 39 x 80	MP61	\$10.15 ea.	MP62	\$10.75 ea.	MP63	\$13.50 ea.
	FULL, 54 x 75	MP64	\$13.25 ea.	MP65	\$13.95 ea.	MP66	\$16.00 ea.
	QUEEN, 60 x 80	MP67	\$15.05 ea.	MP68	\$15.90 ea.	MP69	\$17.95 ea.
	KING, 78 x 80	MP70	\$19.10 ea.	MP71	\$19.75 ea.	MP72	\$22.35 ea.
QUILTED "WATERPROOF" PADS • Triple protection: Two layers of absorbant polyester with a middle layer of waterproof heavy gauge vinyl. • Seamless construction • Color: White • Sonically Quilted • Machine wash	SINGLE XL, 36 x 80	MP73	\$13.50 ea.	MP74	\$14.05 ea.	MP75	\$16.45 ea.
	TWIN, 39 x 75	MP76	\$13.80 ea.	MP77	\$14.30 ea.	MP78	\$16.85 ea.
	TWIN XL, 39 x 80	MP79	\$14.25 ea.	MP80	\$15.10 ea.	MP81	\$17.45 ea.
	FULL, 54 x 75	MP82	\$18.30 ea.	MP83	\$18.20 ea.	MP84	\$21.00 ea.
	QUEEN, 60 x 80	MP85	\$19.95 ea.	MP86	\$20.50 ea.	MP87	\$23.65 ea.
	KING, 78 x 80	MP88	\$25.15 ea.	MP89	\$25.70 ea.	MP90	\$29.20 ea.



PRIVACY SCREENS



MOBILE THREE PANEL PRIVACY SCREEN

With a versatile design, this product provides a quick and easy way to divide space and create privacy. Our vinyl is extruded to a finished thickness of 5.5mil and unlike other textiles, our vinyl products can be wiped down with a moist cloth without damaging the integrity of the material many way. Built to last for years of trouble-free service.

- Sturdy three panel hinged design folds in thirds for storage
- Glossy white powder coated steel tubular base and frame
- Easy to clean flame retardant vinyl panels
- Wide base with twin wheel casters for easy maneuverability
- Wide array of applications, from nursing homes & hospitals to disaster relief and military aid

Overall dimensions (fully opened) 81 "L x 69"H; Single panel size: 27"W x 55"H
Floor to screen bottom: 17.5"; Casters: 2" twin wheels; Product weight 30 lbs.

Colors: White, Blue, Pink, Green, Beige

CAT NO.	PRICE EACH
MPS3	\$176.00



THREE PANEL STATIONARY PRIVACY SCREEN

With a versatile design, this product provides a quick and easy way to divide space and create privacy. Our vinyl is extruded to a finished thickness of 5.5mil. Unlike other textiles, our vinyl products can be wiped down with a moist cloth without damaging the integrity of the material many way. Built to last for years of trouble-free service.

- Sturdy three panel hinged design folds in thirds for storage
- Glossy white powder coated steel tubular base and frame
- Easy to clean flame retardant vinyl panels
- Wide stance legs with soft rubber feet for stability
- Wide array of applications, from nursing homes & hospitals to disaster relief and military aid
- Proudly Made in the USA

Overall dimensions (fully opened) 81 "L x 67"H; Single panel size: 27"W x 55"H
Floor to screen bottom: 15.5"; Product weight 30 lbs.

Colors: White, Blue, Pink, Green, Beige

CAT NO.	PRICE EACH
SPS3	\$209.00

STANDARD WALL MOUNT PRIVACY SCREEN

This telescoping privacy screen offers ultimate versatility by extending from 50" to 90". This vinyl has the look and feel of fabric without the additional weight or cost. Our vinyl is extruded to a finished thickness of 5.5mil and unlike other textiles, our vinyl products can be wiped down with a moist cloth without damaging the integrity of the material in any way.

- Folds flat against wall when not in use
- Easy to clean flame retardant vinyl
- Kit includes wall bracket telescoping rod, curtain and hooks
- Curtain measures 71" high by 107" wide
- Wide array of applications, from nursing homes & hospitals to disaster relief and military aid

Dimensions: 90 "L x 72"H; Product weight 9 lbs.



PRIVACY SCREEN VINYL COLOR OPTIONS



CAT NO.	PRICE EACH
WPS3	\$173.00



BATH ROBES



Terry Kimono Bath Robe

100% Cotton Terry White Kimono Bath Robe.
24" Arms, 48" L w/ 60" Sweep.

TERRY KIMONO			
CAT NO.	COLOR	CASE PACK	PRICE EACH
KB100	White	12	\$24.95 EA.

Waffle Kimono White Bathrobe

60% ringspun cotton/40% polyester flat weave oxford waffle in a Kimono style. Light in weight, easy to wash and quick to dry making it just right for that tropical destination. High quality construction makes for a perfect unisex fit. One size fits most. 48" long x 60" girth.

WAFFLE KIMONO			
CAT NO.	COLOR	CASE PACK	PRICE EACH
KB200	White	12	\$26.54 EA.



Cotton Velour Kimono White Bathrobe

100% ringspun cotton sheared in a Kimono style This plush and cozy robe will make a great impression with all of your guests. Inside loops help with that extra absorbency and its sheared velour creates the ultimate softness on the outside. One size fits most 48" long x 60" girth.

VELOUR KIMONO			
CAT NO.	COLOR	CASE PACK	PRICE EACH
KB300	White	12	\$41.50 EA.



KITCHEN CLOTHING

BIB APRON

Features:

- 100% Polyester
- Self Band at Neck Color Coordinated
- 7.2 oz Poplin Fabric
- 40" Ties

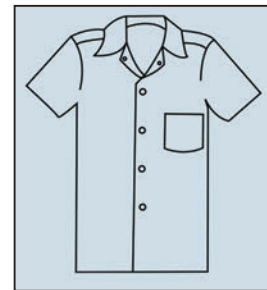
CAT NO.	COLOR	SIZES 32-46	CASE PACK	PRICE
613-WH	WHITE	30 x 35	12 EA.	\$4.00 EA.
613-BL	BLACK	28 x 33	12 EA.	\$5.00 EA.
613-KE	KELLY GREEN	28 x 33	12 EA.	\$5.00 EA.
613-RE	RED	28 x 33	12 EA.	\$5.00 EA.
613-RO	ROYAL BLUE	28 x 33	12 EA.	\$5.00 EA.



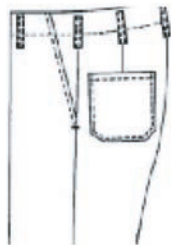
KITCHEN SHIRTS

Features:

- Poly/Cotton Blend.
- Short Sleeve.
- Stainless Steel Gripper Snap Closure.
- Permanent Press.
- One Chest Pocket.
- Bartacked at All Stress Points.

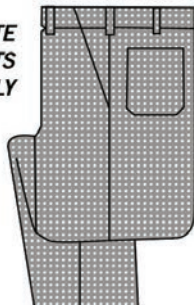


CAT NO.	COLOR	CHEST SIZES 32-50	CHEST SIZES 52-54	CHEST SIZES 56-58	CHEST SIZES 60-62
602-WH	WHITE	\$7.95 EA.	\$8.70 EA.	\$9.60 EA.	\$10.55 EA.
602-BLK	BLACK	\$10.80 EA.	\$11.85 EA.	\$13.00 EA.	\$14.35 EA.



WHITE COOK PANTS
ZIPPER FLY

BLACK & WHITE
CHECK PANTS
ZIPPER FLY



KITCHEN PANTS WHITE AND CHECKERED (BLACK/WHITE)

Features:

- Poly/Cotton Blend.
- 7 1/4 oz. Heavy Duty Fabric.
- Permanent Press.
- Zipper Fly.
- Two Front Pockets.
- Two Back Patch Pockets.
- Belt Loops.
- Bartacked at All Stress Points.

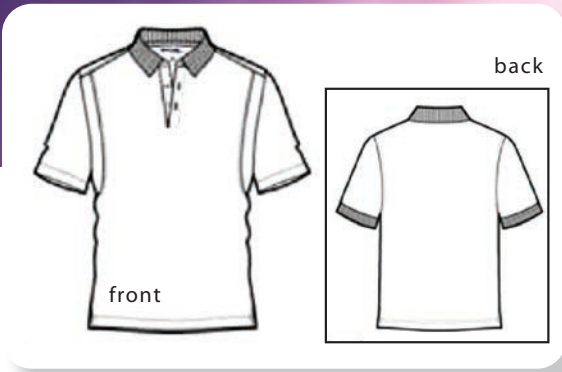
HEMMING SERVICE
AVAILABLE
\$3.00 PER PAIR

ALL INSEAM
36" UNFINISHED

CAT NO.	COLOR	WAIST SIZES 26-48	WAIST SIZES 48-50	WAIST SIZES 52-54	WAIST SIZES 56-58
508-WH	WHITE	\$17.10 EA.	\$18.80 EA.	\$20.65 EA.	\$22.75 EA.
508-BW	BLACK & WHITE CHECKERED	\$19.05 EA.	\$21.00 EA.	\$23.10 EA.	\$25.40 EA.

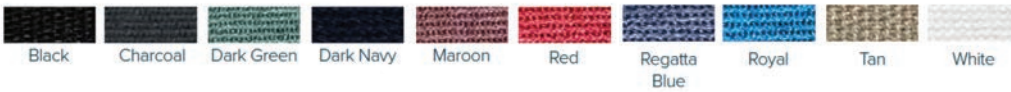


WORK APPAREL



POLO SHIRTS

COLORS



65/35 Poly/Cotton Pique

- Fabric Weight 5 oz.
- Flat knit collar and cuffs
- Metal buttons with dyed-to-match plastic rims
- Double-needle armhole seams and hem
- Side vents

100% Polyester Tricot

- Fabric Weight 3.8 oz.
- Snag resistant
- Moisture wicking
- Double-needle stitching throughout
- Tag-free label
- Taped neck
- Flat knit collar
- 3-button placket with dyed-to-match rubber buttons
- Set-in, open hem sleeves
- Armhole accent
- Side vents

65/35 POLY/COTTON PIQUE				
CAT NO.	SIZES			
	S-XL	2XL	3XL	4XL
6631	\$25.00 ea	\$26.25 ea	\$27.50 ea	\$28.95 ea

100% POLYESTER TRICOT				
CAT NO.	SIZES			
	S-XL	2XL	3XL	4XL
6632	\$33.85 EA	\$35.55 EA	\$37.30 EA	\$39.20 EA

POPLIN WORK SHIRTS

Features:

- Comfortable, long lasting, easy care.
- 65% Dacron polyester 35% Combed cotton.
- 4 1/4 ounce permanent press poplin.
- Lined one-piece collar with permanent stays.



CAT NO.	DESCRIPTION	SIZES				
		S-XL	2XL	3XL	4XL	5XL
SP35	SHORT SLEEVE	\$15.25 EA.	\$16.75 EA.	\$18.45 EA.	\$20.30 EA.	\$22.35 EA.
SP25	LONG SLEEVE	\$16.25 EA.	\$17.85 EA.	\$19.65 EA.	\$21.60 EA.	\$23.35 EA.

COLORS: CHARCOAL, LIGHT BLUE, TAN, GULF BLUE, GRAY, POSTMAN BLUE, SPRUCE GREEN, GRAPHITE, BLACK, NAVY, WHITE



WORK PANTS

Designed for fit, but made for work. These year round work pants are made of 65% Polyester, 35% combed cotton, Permanent Press, Vat Dyed, 7 oz. twill weave, zipper fly, hemmed and open bottoms, with two front and two rear pockets.

CAT NO.	COLOR	SIZE		
		28-42	44-50	52-60
PT21	WORK PANTS	\$27.15 EA.	\$29.85 EA.	\$32.85 EA.

COLORS: BLACK, CHARCOAL, NAVY, SRUCE GREEN, KHAKI, TAN, GRAPHITE, SHELL BROWN, WHITE



BASKETBALL SHOES



LOW LEATHER VELCRO ATHLETIC SHOE

- Solid Black or White Upper & Sole
- Upper Stitched to Non-Marking Sole
- Comfortable Cushion Arch and Insole
- Anti-Fungal & Anti-Bacterial Treated
- No Plastic or Metal
- Men's Sizes 2 - 18, Women's Sizes 4 - 20, Half Sizes Available
- Regular and EEEE Widths
- Available in Black or White
- Packed 12 Per Case in Full Sizes

CAT. NO.	CASE PACK	PRICE PAIR
AS3911	12	\$27.50

BROKEN CASE AVAILABLE • CALL FOR PRICING

LOW TOP JOGGER

- Individually marked for Men's & Women's sizes
- Men's sizes 2 - 17, Women's sizes 4 - half sizes up to 12.5
- Combination of suede leather and nylon fabric
- Cushioned foam rubber lining with arch support
- No metal or plastic construction for the Velcro eyelets
- Suede leather 1" straps with Velcro with double stitched tips
- Non-skid, non-marking white outsole made of dual density rubber
- Available in Black or White
- Packed 12 pair per case in full sizes



CAT. NO.	CASE PACK	PRICE PAIR
J53303	12	\$25.75

BROKEN CASE AVAILABLE • CALL FOR PRICING



BLACK CANVAS VELCRO LOW TOP

- Heavy Black Canvas Upper
- Durable White Vulcanized Soles
- Three Velcro Straps No Metal or Plastic
- Men's Sizes 2 1/2 - 17, Women's Sizes 4 1/2 - 19
- Call for All Black Rubber
- Packed 24 Pair Per Cases in Full Sizes

CAT. NO.	CASE PACK	PRICE PAIR
SC2122	24	\$11.45

BROKEN CASE AVAILABLE • CALL FOR PRICING



SLIP-ONS & SLIPPERS



UNISEX CANVAS SLIP-ON DECK SHOE

- Available in Black, Orange, White & Navy
- Whole Sizes Only
- Packaged 24 Pair Per Case in Full Sizes

CAT. NO.	CASE PACK	PRICE PAIR
SD7200	24	\$7.85

BROKEN CASE AVAILABLE • CALL FOR PRICING

UNISEX HEAVY DUTY CANVAS SLIP-ON

- Thick Vulcanized Basketball Sole
- Durable 11 oz. Navy Canvas Upper
- Stitched Cushion Insole
- Men's Whole Sizes 3 - 17, Women's Whole Sizes 5 - 19
- Available in Orange, White & Navy
- Packaged 24 Pair Per Case in Full Sizes

CAT. NO.	CASE PACK	PRICE PAIR
SD7437	24	\$10.60

BROKEN CASE AVAILABLE • CALL FOR PRICING



MEN'S TERRY CLOTH SLIPPER

- Rubber Sole and Washable Closed Toe & Heel
- Men's Colors Black, Navy & Brown
- Men's Sizes Small, Med., Large, XL and XXL
- Packed 24 Per Case in Full Sizes

CAT. NO.	CASE PACK	PRICE PAIR
ST5150	24	\$11.25

BROKEN CASE AVAILABLE • CALL FOR PRICING



SLIPPERS & SHOWER SHOES



WOMEN'S TERRY CLOTH SLIPPER

- Rubber Sole and Washable Closed Toe & Heel
- Women's Colors Pink, Lt. Blue & White
- Women's Sizes Small, Med., Large, and XL
- Packed 24 Per Case in Full Sizes

CAT. NO.	CASE PACK	PRICE PAIR
ST6150	24	\$11.25

BROKEN CASE AVAILABLE • CALL FOR PRICING

SHOWER SHOE EVA STEP IN

- Molded from Light weight 100% EVA material
- Deters any possible use as a weapon due to the EVA foam material
- Skid resistant, non marking, odor resistant, and waterproof
- May be worn indoors or outdoors
- Sizes marked in the heel for easy inventory and storage
- Molded arch support with foot massaging dots in the sole of the foot area
- Top and side vents for air circulation in the foot bed area
- Sizes: Small 5-6, Medium 7-8, Large 9-10, X Large 11-12, XX Large 13-14, XXX Large 15-16
- Orange in color
- Packaged 24 pair per case in same sizes



CAT. NO.	CASE PACK	PRICE PAIR
SS8188	24	\$10.25

BROKEN CASE AVAILABLE • CALL FOR PRICING



BLACK V STRAP SHOWER SANDAL

- Light Weight Between the Toes
- Male / Female with White Insoles
- Sizes Small, Med, Large, XL, XXL, & XXXL
- Packed 72 Pairs Per Case in Full Sizes

CAT. NO.	CASE PACK	PRICE PAIR
SS8221	72	\$2.50

BROKEN CASE AVAILABLE • CALL FOR PRICING



SANDALS



BLACK CROSS STRAP SHOWER SANDAL

- Light Weight Between the Socks
- Male/ Female with White Insoles
- Sizes Small, Med, Large, XL, XXL, & XXXL
- Packed 72 Pairs Per Case in Full Sizes

CAT. NO.	CASE PACK	PRICE PAIR
SS8226	72	\$2.70

BROKEN CASE AVAILABLE • CALL FOR PRICING

BASKET WEAVE SHOWER SANDAL

- One Piece Washable PVC Sandle
- Anti-Fungal & Anti Bacterial Treated
- Tan & Orange
- Whole Sizes 4 -17
- Fits Male & Female
- Packed 24 Per Case in Full Sizes

CAT. NO.	CASE PACK	PRICE PAIR
SS8999	24	\$5.70

BROKEN CASE AVAILABLE • CALL FOR PRICING



ORANGE TRANSLUCENT UNIFOOT SANDAL

- Unifoot design can be worn on any foot without a right or left design
- Replace a single shoe and not a pair
- One piece PVC design
- Translucent material for easy inspection
- Non marking and slip resistant
- Sizes Small 5-6, Medium 7-8, Large 9-10, X Large 11-12, XX Large 13-14, XXX Large 15-16
- Sizes are marked on top of the Sandal vamp for easy identification
- Packed 36 pair to a case in full sizes

CAT. NO.	CASE PACK	PRICE PAIR
SS8222	36	\$6.45

BROKEN CASE AVAILABLE • CALL FOR PRICING



BASKETBALL SHOES



LOW TOP LACE UP BASKETBALL SHOE

- Heavy Washable Canvas
- Thick Vulcanized Soles
- Stitched Cushion Insoles
- Men's Sizes 2 - 19, Women's Sizes 4 - 21
- Converts For Women's Sizes
- Available in Black or White
- Packed 24 Pair Per Cases in Full Sizes

CAT. NO.	CASE PACK	PRICE PAIR
SC6651	24	\$11.20

BROKEN CASE AVAILABLE • CALL FOR PRICING

HIGH TOP BASKETBALL LACE UP

- Individually marked for Men's & Women's sizes
- Men's sizes 2 - 19, Women's sizes 4 - up, marked wide width
- Non-marking and non-skid tread design
- Toe cap and side foxing is vulcanized white rubber in layers
- Cushioned foam rubber insole is stitched to upper with a glued midsole
- Available in Black or White
- Packed 24 pair per case in full sizes



CAT. NO.	CASE PACK	PRICE PAIR
SC6504	24	\$11.45

BROKEN CASE AVAILABLE • CALL FOR PRICING



LEATHER LOW LACE UP ATHLETIC SHOE

- Solid Black or White Upper & Sole
- Upper Stitched to Non-Marking Sole
- Comfortable Cushion Arch and Insole
- Anti-Fungal & Anti-Bacterial Treated
- No Plastic or Metal
- Men's Sizes 2 - 18, Women's Sizes 4 - 20, Half Sizes Available
- Regular and EEEE Widths
- Available in Black or White
- Packed 12 Per Case in Full Sizes

CAT. NO.	CASE PACK	PRICE PAIR
AS3811	12	\$27.50

BROKEN CASE AVAILABLE • CALL FOR PRICING



SLIP ON SHOES

EVA SHOWER SHOE SLIDE

- Color Orange
- One Piece Construction
- Waterproof
- Lightweight
- Slip Resistant
- 100% Ethyl Vinyl Acetate (EVA)
- Molded to Fit the Foot
- Can Be Worn With or Without Socks
- SIZES: Small 5-6, Medium 7-8, Large 9-10, X Large 11-12, XX Large 13-14, XXX Large 15-16
- Packaged 36 Per case in Full Sizes



CAT. NO.	CASE PACK	PRICE PAIR
SS8666	36	\$6.45

BROKEN CASE AVAILABLE • CALL FOR PRICING

EVA SLIP ON SHOES

- Molded from Light Weight 100% Eva Material/ Deters Use as a Weapon
- Skid Resistant; Non-Marking; Odor Resistant; and Waterproof
- May Be Worn Indoors or Outdoors
- Molded In Arch support With Foot Massaging Dots In the Foot Sole Area
- Top and Side Vents For Air Circulation In the foot Bed Area
- Sizes Marked In the Heel and Molded Into the Sole For Easy
- Inventory and Storage
- Sizes: Small 6-7, Medium 8-9, Large 10-11, X Large 12-13, XX Large 14-15, XXX Large 16-17
- Colors: Black
- Packed 24 Pair Per Case in Full Sizes



CAT. NO.	CASE PACK	PRICE PAIR
SS8444	24	\$9.50

BROKEN CASE AVAILABLE • CALL FOR PRICING

EVA SLIP ON SHOES

- Molded from Light Weight 100% Eva Material
- Skid Resistant; Non-Marking; Odor Resistant; and Waterproof
- Deters any possible use as a weapon due to the EVA foam material
- May Be Worn Indoors Or Outdoors
- Sizes molded In the arch of sole for easy inventory and storage
- Sizes Marked in the Heel and Molded Into the Sole For Easy Inventory and Storage

- Unisex sizing: Men's 2 - Men's 18 / Women's 4 - Women's Largest
- Colors: Black
- Packaged 36 Pair of One Size to a Case

CAT. NO.	CASE PACK	PRICE PAIR
SS8555	24	\$8.50

BROKEN CASE AVAILABLE • CALL FOR PRICING



WORK BOOTS



BLACK LEATHER 8" JUNGLE BOOT

- Military or Boot Camp
- Leather Foot Cordura® Nylon Upper
- Sure Grip Panama PVC Lug Sole
- Regular & Wide Sizes
- Whole Sizes 2 - 15
- Packed 12 pair per case in full sizes

CAT. NO.	CASE PACK	PRICE PAIR
B2317	12	\$32.95

BROKEN CASE AVAILABLE • CALL FOR PRICING

BLACK 6" CORRECTED FULL GRAIN LEATHER BOOT

- Premium Quality 6" Boot
- Available in Brown (regular width only) & Black (seven widths)
- Padded Collar, Lining & Insole
- Oil Resistant Out Sole
- Sizes 4 - 19
- Width B, C, Regular, EE, EEE, EEEE & EEEEE
- Packed 12 pair per case in full sizes

CAT. NO.	CASE PACK	PRICE PAIR
B7132	12	\$53.75

BROKEN CASE AVAILABLE • CALL FOR PRICING



LEATHER BROWN 6" PLAIN TOE PADDED COLLAR SOFT SOLE WORK BOOT

- 4.0+ Oz. Leather Upper
- No shank
- Sized 2 - 19 with half sizes available 2.5 - 12.5
- Individually marked for Men's & Women's sizes
- Available in Regular, Wide and Extra Wide Widths
- Triple stitched in stress areas with enforced gussets
- Ribbed and cushioned outsole with one piece heel and sole
- Oil resistant, non-slipping, non-marking outsole with midsole construction
- Packed 12 pair per case

CAT. NO.	CASE PACK	PRICE PAIR
B7204	12	\$38.00

BROKEN CASE AVAILABLE • CALL FOR PRICING



WORK BOOTS

BLACK LEATHER INMATE WORK BOOT

- Upper of 3.75 to 4.25 tanned smooth cowhide with plain seamless toe.
- Metal rivets (2) per shoe at the vamp area.
- 6 to 7 pairs of Hex shaped aluminum eyelets backed with suede Leather.
- Goodyear welt construction with raised storm welt.
- Sole is black Mini Lug with "oil resistance" Labeled sole.
- Full heel to toe black "Cambrella" type covered insole that is 5mm thick foam.
- Vamp lined with cotton "duck" fabric.
- Rear quarter unlined except for 1" finished Leather roll top and 1" pull tab.
- Non safety chemically treated toe box. No shank re-enforcement of any kind.
- Suede tongue that is lined with cushioned "Cambrella" type foam rubber.
- Permanently sewn cloth Label under the tongue with size and stock number.
- Sizes 3 to 18 men's and also marked women's sizes 5 to 20, regular width.
- Packed 12 pair per case in full sizes.



CAT. NO.	CASE PACK	PRICE PAIR
B7733	12	\$38.00

BROKEN CASE AVAILABLE • CALL FOR PRICING



LEATHER BLACK 6" PLAIN PADDED COLLAR SOFT SOLE WORK BOOT

- 4.0+ Oz. Leather Upper
- Our most popular boot with over One Million Pairs sold!
- No shank
- Sized 2 - 19 with half sizes available 2.5 - 12.5
- Individually marked for Men's & Women's sizes
- Available In Regular, Wide and Extra Wide Widths
- Triple stitched in stress areas with enforced gussets
- Ribbed and cushioned outsole with one piece heel and sole
- Oil resistant, non-slipping, non-marking outsole with midsole construction
- Packed 12 pair per case

CAT. NO.	CASE PACK	PRICE PAIR
B7205	12	\$38.00

BROKEN CASE AVAILABLE • CALL FOR PRICING



WORK BOOTS

FULL LEATHER WORK BOOT

- 6" Full Leather work boot - with a pull Loop finger tab - triple stitched
- 3 Strong hook and Loop closures and no metal eyelets
- Outside padded collar with cambrelle Lining
- Cambrelle boot lining for super wicking of moisture
- Ribbed sc-pedollte oil resistant outsole for extreme durability
- Unisex marked for sizes. Both men and women sizes on each pair
- Shankless design with midsole for security and stability
- Size range MEN 6 -15
- Regular and width-wide
- Packaged 12 pair to a case in full sizes



CAT. NO.	CASE PACK	PRICE PAIR
B7006	12	\$39.50

BROKEN CASE AVAILABLE • CALL FOR PRICING

BLACK LEATHER STEEL TOE

- ASTM Approved 6" Safety Toe Boot
- Passes Compression, Impact & EH
- Cushioned Oil Resistant Outsole
- Genuine Leather Upper
- Sized 2-19
- Reg. & X Wide Widths
- Men and Women Sizes Available
- Note: ASTM Approval Furnished on Request
- Packed 12 Pair Per Case In Full Sizes



CAT. NO.	CASE PACK	PRICE PAIR
SB6161	12	\$42.95

BROKEN CASE AVAILABLE • CALL FOR PRICING

BLACK LEATHER COMPOSITE SAFETY TOE

- ASTM Approved 6" Safety Toe Boot
- Passes Compression, Impact & EH
- Cushioned Oil Resistant Outsole
- Genuine Leather Upper
- Sized 2-19
- Reg. & X Wide Widths
- Note: ASTM Approval Furnished on Request
- Packed 12 Pair Per Case in Full Sizes

CAT. NO.	CASE PACK	PRICE PAIR
SB6198	12	\$49.95

BROKEN CASE AVAILABLE • CALL FOR PRICING



HAMPER STANDS

ECONOMY SPRING HAMPER STAND

Features:

- Natural spring 11/23 steel rods to keep bags on stand.
- Available with or without casters.
- Two sizes 18" and 25" diameter.
- Plastic lids available on some models.



CAT. NO.	DESCRIPTION	PRICE EACH
5575	18" DIAMETER STAND ONLY – 2" CASTERS	\$57.00
5576	18" DIAMETER STAND WITH LID – 2" CASTERS	\$127.00
5577	25" DIAMETER STAND ONLY – 2" CASTERS	\$60.00
5578	25" DIAMETER STAND WITH LID – 2" CASTERS	\$140.00
9993	18" DIAMETER STAND ONLY – METAL RUNNER	\$34.00
9996	25" DIAMETER STAND ONLY – METAL RUNNER	\$35.00

FOLDING HAMPER STANDS

Features:

- Heavy-duty 1" steel tubing.
- Chrome plated.
- Heavy-duty ball bearing casters for smooth free gliding.
- Folds to compact 6" for easy storage.
- Stable balance design. Legs space so that full bags may be removed without lifting cart.



CAT. NO.	DESCRIPTION	PRICE EACH
5555	HOLDS 18" DIAMETER STAND	\$146.00
5565	HOLDS 25" DIAMETER STAND	\$153.00

DOUBLE 25" HAMPER STAND

Features:

- Constructed from 7/8" steel tubing with a bright and sturdy chrome finish
- Hamper stand assembles in minutes
- White ABS high impact lid comes standard. Colored lids available
- Standard and custom content ID labels available
- Bag lock secures liners in place
- Includes six 3" quiet-ride casters ensuring smooth rolling, two are locking to secure the hamper stand in place
- Accessory elevated 7" bottom shelf available to reduce bag capacity



CAT. NO.	DESCRIPTION	PRICE EACH
5705	25" DOUBLE STAND WITH FOOT PEDAL	\$333.00

18" TENSION HAMPER – KNOCKED-DOWN

Features:

- Constructed from 7/8" tubular steel for the base
- 3 Gauge wire for tension arms. Chrome finish.
- Collapses completely for UPS shipping.



CAT. NO.	DESCRIPTION	PRICE EACH
5700	18" COLLAPSIBLE	\$71.50



HAMPERS



SINGLE QUIET CLOSURE LID HAMPER STAND

Single deluxe tubular steel hamper incorporates "Quiet Closure" lid damper technology for quiet and controlled lid closure

- Constructed from 7/8" tubular steel with a solid metal lid and bottom shelf
- Unit is powder coated in a clean and durable gloss white finish
- 3" twin wheel hospital quality and industrial strength castors, (two locking) for smooth and quiet transporting

CAT. NO.	DESCRIPTION	PRICE
5702	25" STAND 18" x 22" x 35" HIGH	\$357.00

SINGLE MEDIUM DUTY MEDICAL HAMPER - 28" HIGH

- Constructed from 7/8" steel tubing with a bright and sturdy chrome finish
- Hamper stand assembles in minutes
- Standard and custom content ID labels available
- Bag lock secures liners in place
- Includes four 3" quiet-ride casters ensuring smooth rolling.
Two are locking to secure the hamper stand in place
- Accessory elevated 7" bottom shelf available to reduce bag capacity

CAT. NO.	DESCRIPTION	PRICE EACH
5729	25" STAND 20" x 18" x 28" HIGH	\$158.00



NARROW COLLAPSIBLE HAMPER WITH VINYL BUSHEL CAPACITY

- Solid folding bottom shelf provides quality strength to this unit
- 3" non-marking casters provide smooth rolling and easy mobility
- Folds to approximately 5" for convenient and safe storage
- Reusable 18 oz. vinyl hamper bag included

VINYL TRUCK COLOR OPTIONS



CAT. NO.	BU	DIMENSION	PRICE EACH
5765	5	18" W x 18" L x 37" H	\$221.00
5766	6	20" W x 22" L x 37" H	\$234.00



HAMPER STANDS



25" DIAMETER SORTING HAMPER STAND

Features:

- The ideal system for sorting linens.
- Tubular chrome-plated steel construction.
- Available in single, double or triple units.
- Foot pedal operated plastic lid.
- Rolls easily on 4" casters (2 swivel, 2 locking)

CAT. NO.	DESCRIPTION	PRICE EACH
5281	25" SINGLE UNIT	\$261.00
5282	25" DOUBLE UNIT	\$437.00
5283	25" TRIPLE UNIT	\$646.00

ROUND HAMPER STANDS

Features:

- Chrome plated, welded tubular steel frame.
- Heavy-duty 2" Swivel casters.
- Heavy-duty stainless steel cover that closes automatically
- Spring loaded foot pedal for easy "hand-free" opening and closing.

CAT. NO.	DESCRIPTION	PRICE EACH
5571	18" ROUND HAMPER WITHOUT COVER	\$131.00
5573	18" ROUND HAMPER WITH COVER	\$254.00



ADJUSTABLE HAMPER STANDS

Features:

- Adjustable hamper stand for ease of loading laundry
- Sturdy 1" tube steel construction
- Zinc plating minimizes rust
- 3" ball bearing rubber, non-marking silent casters
- Adjusts to three bag sizes: 18", 22" or 25"

CAT. NO.	DESCRIPTION	PRICE EACH
5550	STAND ONLY, WIRE PLATFORM	\$172.00



HAMPER STANDS

25" FOLDING HAMPER STAND WITH FOOT PEDAL

Features:

- Constructed from heavy-duty 3/8" wire with a sturdy zinc finish.
- Hamper assembles in minutes by securing bottom shelf and lid wires to allow for hands-free operation of the white ABS high impact lid.
- Includes four 2" hooded ball casters insuring smooth rolling.
- Bag lock secures liners in place.
- Colored lids available.



18" ECONOMY FOLDING HAMPER STAND

Features:

- Constructed from heavy-duty 3/8" wire with a sturdy zinc finish.
- When mobility and a lid are not required just unfold this hamper and it is ready for use.



CAT. NO.	DESCRIPTION	PRICE EACH
5708	25" STAND WITH FOOT PEDAL	\$147.50

CAT. NO.	DESCRIPTION	PRICE EACH
5709	18" SCISSOR STAND	\$40.00

18" TRIANGULAR STAND WITH FOOT PEDAL

Features:

Constructed from 1" tubular steel. • Dual access foot pedal activation makes it easy to access opening from either side of the hamper. • The lid's easy opening and quiet smooth controlled flowing closure to prevent rapid closure. • Legs have adjustable feet to control the height that you desire. • Units are powder coated with an attractive silver finish including the steel lid. • Comes knocked-down for an outstanding freight value. • Easy Assembly.



CAT. NO.	DESCRIPTION	PRICE EACH
5770	18" STAND WITH FOOT PEDAL	\$393.00



PERSONAL BELONGINGS BAGS

STRAIGHT BOTTOM	20" x 30" ROPELESS • FLIP-TOP • NON- FLUID RESISTANT					
	CAT NO.	MATERIAL	DIAM	GAL	HEM	PRICE/DZ
	411NL	200 Denier Nylon White	12"	6	Sewn	\$57.00
	411NL-V	200 Denier Nylon Solid Color Red, Blue, Green, Yellow & Orange	12"	6	Sewn	\$63.00
	411NL-4	400 Denier Nylon White	12"	6	Sewn	\$78.00
	411CD	Cotton Duck Natural	12"	6	Sewn	\$69.00
	411CD-CC	Cotton Duck with Color Coded Stripe 2" Color Band Sewn on one Side	12"	6	Sewn	\$78.00
	411PC	Poly/Cotton White	12"	6	Sewn	\$62.00
	411PC-CC	Poly/Cotton Color Coded 2" Color Band Sewn on one Side	12"	6	Sewn	\$71.00
	411SP	Spun Polyester White	12"	6	Sewn	\$72.00
411SP-CC	Spun Polyester Color Coded 2" Color Band Sewn on one Side	12"	6	Sewn	\$81.00	

STRAIGHT BOTTOM	20" x 30" ROPELESS • FLIP-TOP • FLUID RESISTANT					
	CAT NO.	MATERIAL	DIAM	GAL	HEM	PRICE/DZ
	411CB	Water Repellent Polyester Colors: White, Blue, Green, Yellow & Grey	12"	6	Sewn	\$92.00
RF-411VB	Vinyl Coated Tricot Radio Frequency, Sealed Tricot Colors: White, Blue, Green	12"	6	Sewn	\$114.00	

STRAIGHT BOTTOM	20" x 36" ROPELESS • FLIP-TOP • NON- FLUID RESISTANT					
	CAT NO.	MATERIAL	DIAM	GAL	HEM	PRICE/DZ
	130NL	200 Denier Nylon White	15"	10	Sewn	\$64.00
	130NL-V	200 Denier Nylon Solid Color Red, Blue, Green, Yellow & Orange	15"	10	Sewn	\$70.00
	130NL-4	400 Denier Nylon White	15"	10	Sewn	\$86.00
	130CD	Cotton Duck Natural	15"	10	Sewn	\$75.00
	130CD-CC	Cotton Duck with Color Coded Stripe 2" Color Band Sewn on one Side	15"	10	Sewn	\$84.00
	130PC	Poly/Cotton White	15"	10	Sewn	\$69.00
	130PC-CC	Poly/Cotton Color Coded 2" Color Band Sewn on one Side	15"	10	Sewn	\$78.00
	130SP	Spun Polyester White	15"	10	Sewn	\$91.00
130SP-CC	Spun Polyester Color Coded 2" Color Band Sewn on one Side	15"	10	Sewn	\$100.00	

STRAIGHT BOTTOM	20" x 36" ROPELESS • FLIP-TOP • FLUID RESISTANT					
	CAT NO.	MATERIAL	DIAM	GAL	HEM	PRICE/DZ
	130CB	Water Repellent Polyester Colors: White, Blue, Green, Yellow & Grey	15"	10	Sewn	\$101.00
RF-130VB	Vinyl Coated Tricot Radio Frequency, Sealed Tricot Colors: White, Blue, Green	15"	10	Sewn	\$126.00	

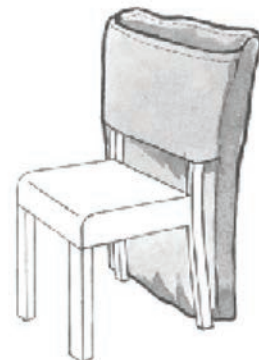
Features:

- Ropeless, flips closed just like a sandwich bag.
- For long term patients.
- Not designed for conventional hamper stands.
- Color available for nylon and color coded stripes: Red, Blue, Green, Yellow & Orange.

**SPECIAL ORDER COLORS
SUBJECT TO AVAILABILITY
ADD 15% TO COST
10 DOZEN MINIMUM**



**STANDARD ROPELESS
STRAIGHT BOTTOM
STYLE**



CHAIRBACK STYLE



PERSONAL BELONGINGS BAGS

STRAIGHT BOTTOM	18" x 30" DRAW STRING • SPRING LOCK • NON- FLUID RESISTANT				
	CAT NO.	MATERIAL	DIAM	GAL	PRICE/DZ
	SP-1830NL	200 Denier Nylon White	11"	5	\$45.00
	SP-1830NL-V	200 Denier Nylon Solid Color Red, Blue, Green, Yellow & Orange	11"	5	\$51.00
	SP-1830NL-4	400 Denier Nylon White	11"	5	\$66.00
	SP-1830CD	Cotton Duck Natural	11"	5	\$55.00
	SP-1830CD-CC	Cotton Duck with Color Coded Stripe 2" Color Band Sewn on one Side	11"	5	\$64.00
	SP-1830PC	Poly/Cotton White	11"	5	\$72.00
	SP-1830PC-CC	Poly/Cotton Color Coded 2" Color Band Sewn on one Side	11"	5	\$81.00
	SP-1830SP	Spun Polyester White	11"	5	\$61.00
SP-1830SP-CC	Spun Polyester Color Coded 2" Color Band Sewn on one Side	11"	5	\$70.00	

STRAIGHT BOTTOM	18" x 30" DRAW STRING • SPRING LOCK • FLUID RESISTANT				
	CAT NO.	MATERIAL	DIAM	GAL	PRICE/DZ
	SP-1830CB	Water Repellent Polyester Colors: White, Blue, Green, Yellow & Grey	11"	5	\$75.00
RF-1830VB	Vinyl Coated Tricot Radio Frequency, Sealed Tricot Colors: White, Blue, Green	11"	5	\$93.00	

STRAIGHT BOTTOM	24" x 36" DRAW STRING • SPRING LOCK • NON- FLUID RESISTANT				
	CAT NO.	MATERIAL	DIAM	GAL	PRICE/DZ
	SP-2436NL	200 Denier Nylon White	15"	11	\$51.00
	SP-2436NL-V	200 Denier Nylon Solid Color Red, Blue, Green, Yellow & Orange	15"	11	\$57.00
	SP-2436NL-4	400 Denier Nylon White	15"	11	\$74.00
	SP-2436CD	Cotton Duck Natural	15"	11	\$62.00
	SP-2436CD-CC	Cotton Duck with Color Coded Stripe 2" Color Band Sewn on one Side	15"	11	\$71.00
	SP-2436PC	Poly/Cotton White	15"	11	\$57.00
	SP-2436PC-CC	Poly/Cotton Color Coded 2" Color Band Sewn on one Side	15"	11	\$66.00
	SP-2436SP	Spun Polyester White	15"	11	\$70.00
SP-2436SP-CC	Spun Polyester Color Coded 2" Color Band Sewn on one Side	15"	11	\$79.00	

STRAIGHT BOTTOM	24" x 36" DRAW STRING • SPRING LOCK • FLUID RESISTANT				
	CAT NO.	MATERIAL	DIAM	GAL	PRICE/DZ
	SP-2436CB	Water Repellent Polyester Colors: White, Blue, Green, Yellow & Grey	15"	11	\$85.00
SRF-2436VB	Vinyl Coated Tricot Radio Frequency, Sealed Tricot Colors: White, Blue, Green	15"	11	\$106.00	

Features:

- Drawstring sewn in top hem.
- Spring lock closure, to prevent spillage.
- Sized to accommodate individual belongings.
- Color available for nylon and color coded stripes: Red, Blue, Green, Yellow & Orange

**SPECIAL ORDER COLORS
SUBJECT TO AVAILABILITY
ADD 15% TO COST
10 DOZEN MINIMUM**



**STANDARD DRAWCORD
STRAIGHT BOTTOM
STYLE**



**SPRING LOCK
CLOSURE**



HAMPER BAGS 27" ROPELESS

Features:

- Ropeless, flips closed just like a sandwich bag.
- All stress points reinforced.
- Top and bottom dump handles for easy dumping.
- Color available for nylon and color coded stripes: Red, Blue, Green, Yellow & Orange.

**SPECIAL ORDER COLORS
SUBJECT TO AVAILABILITY
ADD 15% TO COST
10 DOZEN MINIMUM**

Selling Tidbits:

- During linen collection, all laundry bags should be placed on a covered hamper stand for easy transport, and for sanitary purposes, minimizing the handling of the contaminated linen.
- When not in use, all stands containing soiled or contaminated linen must always be covered; if the stand does not contain a cover, MAYBECK can manufacture nylon caps to fit it.
- Laundry should never be sorted in patient or using area.

44" x 43" ROPELESS • FLIP- TOP • NON- FLUID RESISTANT						
STRAIGHT BOTTOM	CAT NO.	MATERIAL	DIAM	GAL	HEM	PRICE/DZ
	270NL	200 Denier Nylon White	27"	55	Elastic	\$126.00
	270NL-V	200 Denier Nylon Solid Color Red, Blue, Green, Yellow & Orange	27"	55	Elastic	\$137.00
	270NL-4	400 Denier Nylon White	27"	55	Elastic	\$170.00
	270CD	Cotton Duck Natural	27"	55	Sewn	\$148.00
	270CD-CC	Cotton Duck with Color Coded Stripe 2" Color Band Sewn on one Side	27"	55	Sewn	\$157.00
	270PC	Poly/Cotton White	27"	55	Sewn	\$136.00
	270PC-CC	Poly/Cotton Color Coded 2" Color Band Sewn on one Side	27"	55	Sewn	\$145.00
	270SP	Spun Polyester White	27"	55	Sewn	\$161.00
	270SP-CC	Spun Polyester Color Coded 2" Color Band Sewn on one Side	27"	55	Sewn	\$170.00



**STANDARD ROPELESS
STRAIGHT BOTTOM
STYLE**



**STANDARD ROPELESS
ROUND BOTTOM
STYLE**

44" x 43" ROPELESS • FLIP- TOP • NON- FLUID RESISTANT						
ROUND BOTTOM	CAT NO.	MATERIAL	DIAM	GAL	HEM	PRICE/DZ
	280NL	200 Denier Nylon White	27"	55	Elastic	\$133.00
	280NL-V	200 Denier Nylon Solid Color Red, Blue, Green, Yellow & Orange	27"	55	Elastic	\$146.00
	280NL-4	400 Denier Nylon White	27"	55	Elastic	\$181.00
	280CD	Cotton Duck Natural	27"	55	Sewn	\$159.00
	280CD-CC	Cotton Duck with Color Coded Stripe 2" Color Band Sewn on one Side	27"	55	Sewn	\$168.00
	280PC	Poly/Cotton White	27"	55	Sewn	\$145.00
	280PC-CC	Poly/Cotton Color Coded 2" Color Band Sewn on one Side	27"	55	Sewn	\$154.00
	280SP	Spun Polyester White	27"	55	Sewn	\$172.00
	280SP-CC	Spun Polyester Color Coded 2" Color Band Sewn on one Side	27"	55	Sewn	\$181.00

44" x 43" ROPELESS • FLIP- TOP • FLUID RESISTANT						
STRAIGHT BOTTOM	CAT NO.	MATERIAL	DIAM	GAL	HEM	PRICE/DZ
	270CB	Water Repellent Polyester Colors: White, Blue, Green, Yellow & Grey	27"	55	Elastic	\$204.00
	RF-270VB	Vinyl Coated Tricot Radio Frequency, Sealed Tricot Colors: White, Blue, Green	27"	55	Sewn	\$254.00



**OPTIONAL
BIO-HAZARD LABEL**
Available on water repellent polyester bags only. CB style add \$14.00 per dozen.



25" DRAWCORD LAUNDRY BAGS

Features:

- Drawstring sewn in top hem.
- Spring lock closure, to prevent spillage.
- Color available for nylon and color coded stripes: Red, Blue, Green, Yellow & Orange

**SPECIAL ORDER
COLORS SUBJECT TO
AVAILABILITY
ADD 15% TO COST
10 DOZEN MINIMUM**

Selling Tidbits:

- When converting from flat size to diameter, lay bag down flat, measure across bag, multiple by 2 and divide by 3.14.
- **Example:** a bag laid out that measures 40", multiplied by 2=80", divided by 3.14=25.48, rounded out is 25" diameter bag.
- When measuring a square or rectangle container for a laundry bag, always measure the outside dimension, length and width, all 4 sides, add the total and divide by 3.14 to determine the diameter.
- When determining the height needed for the laundry bag, measure the inside height and add 7" for an overlapping effect.
- MAYBECK can custom design any bag to the customers specifications.

40" x 40" DRAW STRING - SPRING LOCK - NON- FLUID RESISTANT					
CAT NO.	MATERIAL	DIAM	GAL	PRICE/DZ	
SP-4040NL	200 Denier Nylon White	25"	44	\$82.00	STRAIGHT BOTTOM
SP-4040NL-V	200 Denier Nylon Solid Color Red, Blue, Green, Yellow & Orange	25"	44	\$91.00	
SP-4040NL-4	400 Denier Nylon White	25"	44	\$112.00	
SP-4040CD	Cotton Duck Natural	25"	44	\$95.00	
SP-4040CD-CC	Cotton Duck with Color Coded Stripe 2" Color Band Sewn on one Side	25"	44	\$104.00	
SP-4040PC	Poly/Cotton White	25"	44	\$89.00	
SP-4040PC-CC	Poly/Cotton Color Coded 2" Color Band Sewn on one Side	25"	44	\$98.00	
SP-4040SP	Spun Polyester White	25"	44	\$106.00	
SP-4040SP-CC	Spun Polyester Color Coded 2" Color Band Sewn on one Side	25"	44	\$115.00	



**OPTIONAL
COLOR CODED
STRIPE**



**STANDARD DRAWCORD
ROUND BOTTOM
STYLE**

40" x 37" DRAW STRING - SPRING LOCK - NON- FLUID RESISTANT					
CAT NO.	MATERIAL	DIAM	GAL	PRICE/DZ	
S-225NL	200 Denier Nylon White	25"	44	\$106.00	ROUND BOTTOM
S-225NL-V	200 Denier Nylon Solid Color Red, Blue, Green, Yellow & Orange	25"	44	\$121.00	
S-225NL-4	400 Denier Nylon White	25"	44	\$149.00	
S-225CD	Cotton Duck Natural	25"	44	\$125.00	
S-225CD-CC	Cotton Duck with Color Coded Stripe 2" Color Band Sewn on one Side	25"	44	\$134.00	
S-225PC	Poly/Cotton White	25"	44	\$115.00	
S-225PC-CC	Poly/Cotton Color Coded 2" Color Band Sewn on one Side	25"	44	\$124.00	
S-225SP	Spun Polyester White	25"	44	\$141.00	
S-225SP-CC	Spun Polyester Color Coded 2" Color Band Sewn on one Side	25"	44	\$150.00	

40" x 40" DRAW STRING - SPRING LOCK - FLUID RESISTANT					
CAT NO.	MATERIAL	DIAM	GAL	PRICE/DZ	
SP-4040CB	Water Repellent Polyester Colors: White, Blue, Green, Yellow & Grey	25"	44	\$162.00	STRAIGHT BOTTOM
SP-4040VB	Vinyl Coated Tricot Radio Frequency, Sealed Tricot Colors: White, Blue, Green	25"	44	\$201.00	



**SPRING LOCK
CLOSURE**



HAMPER BAGS 25" ROPELESS

Features:

- Ropeless, flips closed just like a sandwich bag.
- All stress points reinforced.
- Top and bottom dump handles for easy dumping.
- Color available for nylon and color coded stripes: Red, Blue, Green, Yellow & Orange.

**SPECIAL ORDER COLORS
SUBJECT TO AVAILABILITY
ADD 15% TO COST
10 DOZEN MINIMUM**

Selling Tidbits:

- The end users of laundry bags are Hospitals, Nursing Homes, Prisons and Hotels.
- Ropeless (flip-top) bags are most popular with Hospitals.
- Drawcord bags are most popular with Nursing Homes, Prisons and Hotels.

40" x 43" ROPELESS • FLIP- TOP • NON- FLUID RESISTANT					
CAT NO.	MATERIAL	DIAM	GAL	HEM	PRICE/DZ
240NL	200 Denier Nylon White	25"	44	Elastic	\$108.00
240NL-V	200 Denier Nylon Solid Color Red, Blue, Green, Yellow & Orange	25"	44	Elastic	\$117.00
240NL-4	400 Denier Nylon White	25"	44	Elastic	\$145.00
240CD	Cotton Duck Natural	25"	44	Sewn	\$126.00
240CD-CC	Cotton Duck with Color Coded Stripe 2" Color Band Sewn on one Side	25"	44	Sewn	\$135.00
240PC	Poly/Cotton White	25"	44	Sewn	\$117.00
240PC-CC	Poly/Cotton Color Coded 2" Color Band Sewn on one Side	25"	44	Sewn	\$126.00
240SP	Spun Polyester White	25"	44	Sewn	\$137.00
240SP-CC	Spun Polyester Color Coded 2" Color Band Sewn on one Side	25"	44	Sewn	\$146.00

STRAIGHT BOTTOM



**STANDARD ROPELESS
STRAIGHT BOTTOM
STYLE**



**STANDARD ROPELESS
ROUND BOTTOM
STYLE**

40" x 43" ROPELESS • FLIP- TOP • NON- FLUID RESISTANT					
CAT NO.	MATERIAL	DIAM	GAL	HEM	PRICE/DZ
250NL	200 Denier Nylon White	25"	44	Elastic	\$115.00
250NL-V	200 Denier Nylon Solid Color Red, Blue, Green, Yellow & Orange	25"	44	Elastic	\$126.00
250NL-4	400 Denier Nylon White	25"	44	Elastic	\$156.00
250CD	Cotton Duck Natural	25"	44	Sewn	\$136.00
250CD-CC	Cotton Duck with Color Coded Stripe 2" Color Band Sewn on one Side	25"	44	Sewn	\$145.00
250PC	Poly/Cotton White	25"	44	Sewn	\$124.00
250PC-CC	Poly/Cotton Color Coded 2" Color Band Sewn on one Side	25"	44	Sewn	\$133.00
250SP	Spun Polyester White	25"	44	Sewn	\$147.00
250SP-CC	Spun Polyester Color Coded 2" Color Band Sewn on one Side	25"	44	Sewn	\$156.00

ROUND BOTTOM

40" x 43" ROPELESS • FLIP- TOP • FLUID RESISTANT					
CAT NO.	MATERIAL	DIAM	GAL	HEM	PRICE/DZ
240CB	Water Repellent Polyester Colors: White, Blue, Green, Yellow & Grey	25"	44	Elastic	\$176.00
RF-240VB	Vinyl Coated Tricot Radio Frequency, Sealed Tricot Colors: White, Blue, Green	25"	44	Sewn	\$218.00

**STRAIGHT
BOTTOM**



**OPTIONAL
BIO-HAZARD LABEL**
Available on water
repellent polyester bags
only. CB style add
\$14.00 per dozen.



18" DRAWCORD LAUNDRY BAGS

Features:

- Drawstring sewn in top hem.
- Spring lock closure, to prevent spillage.
- Color available for nylon and color coded stripes: Red, Blue, Green, Yellow & Orange

**SPECIAL ORDER COLORS
SUBJECT TO AVAILABILITY
ADD 15% TO COST
10 DOZEN MINIMUM**

Selling Tidbits:

- Fluid resistant are used to comply with OSHA'S regulation which states: "Whenever contaminated laundry is wet and presents a reasonable likelihood of strike-through or leakage from the bag or container, the laundry shall be placed and transported in bags or containers which prevent soakthrough and leakage of fluids to the exterior."
- Radio frequency sealing is a heat sealing process which will prevent liquids from leaking. This process is now done on all vinyl coated tricot bags.
- Water repellent polyester is sewn with a special designed thread and binding tape tested to prevent leakage up to a minimum of 100 washes.

30" x 40" DRAW STRING - SPRING LOCK - NON- FLUID RESISTANT					
CAT NO.	MATERIAL	DIAM	GAL	PRICE/DZ	
SP-3040NL	200 Denier Nylon White	18"	26	\$59.00	STRAIGHT BOTTOM
SP-3040NL-V	200 Denier Nylon Solid Color Red, Blue, Green, Yellow & Orange	18"	26	\$68.00	
SP-3040NL-4	400 Denier Nylon White	18"	26	\$86.00	
SP-3040CD	Cotton Duck Natural	18"	26	\$72.00	
SP-3040CD-CC	Cotton Duck with Color Coded Stripe 2" Color Band Sewn on one Side	18"	26	\$81.00	
SP-3040PC	Poly/Cotton White	18"	26	\$67.00	
SP-3040PC-CC	Poly/Cotton Color Coded 2" Color Band Sewn on one Side	18"	26	\$76.00	
SP-3040SP	Spun Polyester White	18"	26	\$78.00	
SP-3040SP-CC	Spun Polyester Color Coded 2" Color Band Sewn on one Side	18"	26	\$87.00	



**STANDARD DRAWCORD
STRAIGHT BOTTOM
STYLE**



**STANDARD DRAWCORD
ROUND BOTTOM
STYLE**

30" x 37" DRAW STRING - SPRING LOCK - NON- FLUID RESISTANT					
CAT NO.	MATERIAL	DIAM	GAL	PRICE/DZ	
S-219NL	200 Denier Nylon White	18"	26	\$85.00	ROUND BOTTOM
S-219NL-V	200 Denier Nylon Solid Color Red, Blue, Green, Yellow & Orange	18"	26	\$93.00	
S-219NL-4	400 Denier Nylon White	18"	26	\$115.00	
S-219CD	Cotton Duck Natural	18"	26	\$100.00	
S-219CD-CC	Cotton Duck with Color Coded Stripe 2" Color Band Sewn on one Side	18"	26	\$109.00	
S-219PC	Poly/Cotton White	18"	26	\$91.00	
S-219PC-CC	Poly/Cotton Color Coded 2" Color Band Sewn on one Side	18"	26	\$100.00	
S-219SP	Spun Polyester White	18"	26	\$109.00	
S-219SP-CC	Spun Polyester Color Coded 2" Color Band Sewn on one Side	18"	26	\$118.00	

30" x 40" DRAW STRING - SPRING LOCK - FLUID RESISTANT					
CAT NO.	MATERIAL	DIAM	GAL	PRICE/DZ	
SP-3040CB	Water Repellent Polyester Colors: White, Blue, Green, Yellow & Grey	18"	26	\$136.00	STRAIGHT BOTTOM
SP-3040VB	Vinyl Coated Tricot Radio Frequency, Sealed Tricot Colors: White, Blue, Green	18"	26	\$169.00	



**SPRING LOCK
CLOSURE**



PVC CARTS



PVC LINEN CARTS

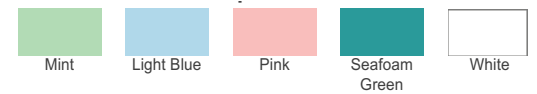
- Easy to maneuver, even when full
- Available in 2, 3, or four shelves units
- New top support plate on all carts
- Push-pull handles
- Cover opens on both sides for easy loading and unloading
- Removable shelves for easy cleaning
- Cover removes easily for cleaning
- Covers available in mesh or Sure-Chek

CAT. NO.	SIZE	DESCRIPTION	PRICE EACH
PVC63-4	20 X 40 X 63 HIGH	4 SHELVES KNOCK DOWN	\$667.00
PVC50-3	20 X 40 X 50 HIGH	3 SHELVES KNOCK DOWN	\$523.00
PVC36-2	20 X 40 X 36 HIGH	2 SHELVES KNOCK DOWN	\$398.00

Mesh Color Options



Sure-Chek® Color Options



CAT. NO.	SIZE	DESCRIPTION	PRICE EACH
PVC31-1	17 X 17 X 35 HIGH	SINGLE UNIT	\$260.00
PVC31-2	18 X 37 X 35 HIGH	DOUBLE UNIT	\$427.00
PVC31-3	18 X 57 X 35 HIGH	TRIPLE UNIT	\$604.00

PVC 25" DIAMETER SORTING HAMPER STAND

- Designed for easy release and removal of plastic liner or leakproof bag
- Eliminates excessive bending and lifting
- Wire hangers hold plastic liners or leakproof bags in place
- Footpedals standard
- Standard with mesh or leakproof bags
- Mesh zipper-front bags, accommodating 39 gallon plastic liners, are available in 12 colors
- Washable leakproof bags are available in 4 colors
- PLEASE SPECIFY: Zipper-front mesh bag or leakproof bag and color

MULTI-PURPOSE CART

- Lightweight, easy to maneuver
- Convenient push bar
- 4" casters provide smooth mobility
- Does not include cover

CAT. NO.	SIZE	DESCRIPTION	PRICE EACH
PVC39-2	20 X 36 X 39	MULTI-PURPOSE	\$330.00
PVC38-2	24 X 26 X 38	MULTI-PURPOSE	\$262.00



HAMPER BAGS 18" ROPELESS

Features:

- Ropeless, flips closed just like a sandwich bag.
- All stress points reinforced.
- Top and bottom dump handles for easy dumping.
- Color available for nylon and color coded stripes: Red, Blue, Green, Yellow & Orange.

**SPECIAL ORDER COLORS
SUBJECT TO AVAILABILITY
ADD 15% TO COST
10 DOZEN MINIMUM**

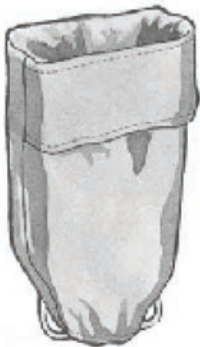
Selling Tidbits:

- A laundry bag is used to collect and house soiled linen.
- A ropeless bag is also known as a self closing bag. It contains a sewn on flap which, when the bag is full, flips closed like a sandwich bag.
- In most cases, laundry bags are placed in some type of hamper stand.
- To convert from diameter to flat measurement, multiply diameter x 3.14 and divide by 2. Example: 18" x 3.14=56.32, divided by 2=28.56 or 30" rounded out, which allows for shrinkage.

30" x 43" ROPELESS • FLIP- TOP • NON- FLUID RESISTANT						
STRAIGHT BOTTOM	CAT NO.	MATERIAL	DIAM	GAL	HEM	PRICE/DZ
	180NL	200 Denier Nylon White	18"	26	Elastic	\$85.00
	180NL-V	200 Denier Nylon Solid Color Red, Blue, Green, Yellow & Orange	18"	26	Elastic	\$95.00
	180NL-4	400 Denier Nylon White	18"	26	Elastic	\$118.00
	180CD	Cotton Duck Natural	18"	26	Sewn	\$103.00
	180CD-CC	Cotton Duck with Color Coded Stripe 2" Color Band Sewn on one Side	18"	26	Sewn	\$112.00
	180PC	Poly/Cotton White	18"	26	Sewn	\$95.00
	180PC-CC	Poly/Cotton Color Coded 2" Color Band Sewn on one Side	18"	26	Sewn	\$104.00
	180SP	Spun Polyester White	18"	26	Sewn	\$112.00
	180SP-CC	Spun Polyester Color Coded 2" Color Band Sewn on one Side	18"	26	Sewn	\$121.00



**STANDARD ROPELESS
STRAIGHT BOTTOM
STYLE**



**STANDARD ROPELESS
ROUND BOTTOM
STYLE**

30" x 43" ROPELESS • FLIP- TOP • NON- FLUID RESISTANT						
ROUND BOTTOM	CAT NO.	MATERIAL	DIAM	GAL	HEM	PRICE/DZ
	190NL	200 Denier Nylon White	18"	26	Elastic	\$98.00
	190NL-V	200 Denier Nylon Solid Color Red, Blue, Green, Yellow & Orange	18"	26	Elastic	\$102.00
	190NL-4	400 Denier Nylon White	18"	26	Elastic	\$126.00
	190CD	Cotton Duck Natural	18"	26	Sewn	\$112.00
	190CD-CC	Cotton Duck with Color Coded Stripe 2" Color Band Sewn on one Side	18"	26	Sewn	\$121.00
	190PC	Poly/Cotton White	18"	26	Sewn	\$101.00
	190PC-CC	Poly/Cotton Color Coded 2" Color Band Sewn on one Side	18"	26	Sewn	\$110.00
	190SP	Spun Polyester White	18"	26	Sewn	\$121.00
	190SP-CC	Spun Polyester Color Coded 2" Color Band Sewn on one Side	18"	26	Sewn	\$130.00

30" x 43" ROPELESS • FLIP- TOP • FLUID RESISTANT						
STRAIGHT BOTTOM	CAT NO.	MATERIAL	DIAM	GAL	HEM	PRICE/DZ
	180CB	Water Repellent Polyester Colors: White, Blue, Green, Yellow & Grey	18"	26	Elastic	\$146.00
	RF-180VB	Vinyl Coated Tricot Radio Frequency, Sealed Tricot Colors: White, Blue, Green	18"	26	Sewn	\$181.00



OPTIONAL BIO-HAZARD LABEL

Available on water repellent polyester bags only. CB style add \$14.00 per dozen.



GARMENT STORAGE BAGS

MESH

Features:

- Industrial nylon mesh
- Water repellent.
- Mildew and rot resistant
- Strong metal hanger (3/16 diameter)
- Inside clothing hanger ring.
- Heavy duty security zipper with double slider lock (locks not included)
- Outside identification pocket of clear vinyl (5" wide by 3-1/2" long)



Dimensions:

- Overall size: 22" Wide x 39" Long by 3" deep with 3" hanger hook.
- Bag Size: 22" Wide by 36" long by 3" deep. Color: • Green.

CAT. NO.	DESCRIPTION	PRICE EACH		
		1-5	6-11	12-19
2136	MESH	\$19.50	\$14.70	\$11.50

NYLON

Features:

- Durable nylon material.
- Water repellent.
- Mildew and rot resistant.
- Strong metal hanger (3/16 diameter)
- Inside clothing hanger ring.
- Heavy duty security zipper with slider lock (locks not included)
- Outside identification pocket of clear vinyl (5" wide by 3-1/2" long)
- Two(2) inside vented pockets are attached to bag. Lower pocket with Velcro fastener.



Dimensions:

- Overall size: 22" Wide x 57" Long by 3" deep with 3" hanger hook.
- Bag Size: 22" Wide by 54" long by 3" deep. Color: • Black- Royal Blue. Overall size: 22" Wide x 39" Long by 3" deep with 3" hanger hook.
- Bag Size: 22" Wide by 36" long by 3" deep. Color: • Green.

CAT. NO.	DESCRIPTION	PRICE EACH		
		1-5	6-11	12-19
2157	NYLON	\$31.50	\$26.25	\$21.00

CANVAS

Features:

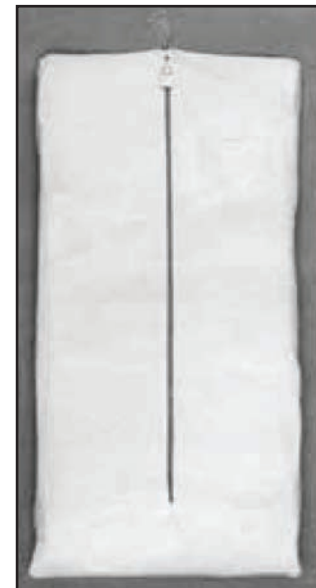
- Heavy duty canvas.
- Mildew and rot resistant.
- Strong Metal hanger (3/16" diameter)
- Heavy duty security zipper with slider lock (locks not included)
- Outside identification pocket of clear vinyl (5" wide by 3-1/2" long) One(l) inside mesh pocket. Two mesh side panels for ventilation

Dimensions:

- Overall size: 22" Wide x 42" Long by 3" deep with 3" hanger hook.
- Bag Size: 22" Wide by 42" long by 3" deep.

Color:

- Off-White



CAT. NO.	DESCRIPTION	PRICE EACH		
		1-5	6-11	12-19
2142	CANVAS	\$21.00	\$18.90	\$15.75

